

Surveillance Technology Public Comment Meeting

Seattle Police Department

Technology Assisted Crime Prevention Pilot
Project



Public Records Act Notice

- This meeting is being recorded and will be posted online.
- Information provided (including public comments) to the City of Seattle is considered a public record and may be subject to public disclosure. For more information see the Public Records Act, RCW Chapter 42.56.

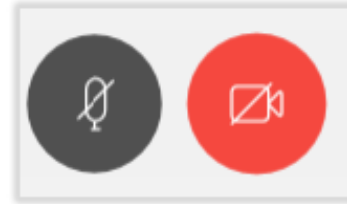


WebEx Basics

Participant Etiquette

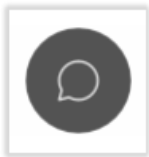
Manage your audio and video appropriately. It is good Webex etiquette to mute your line when you are not speaking. The microphone icon will be **RED** when muted.

Using video in a meeting can help teams stay connected and aligned as well as improve overall communication. Sometimes though, video can be distracting. To mute your video, click the video icon. The icon will be **RED** when muted.

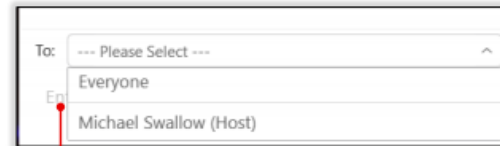
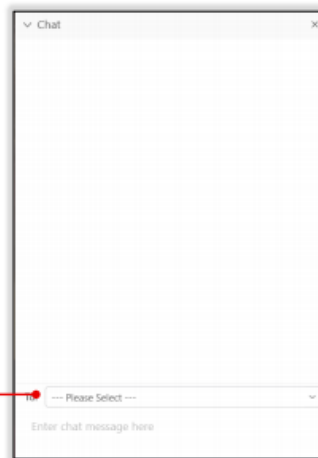


Chatting

Select the Chat icon on the tool bar at the bottom of the screen.

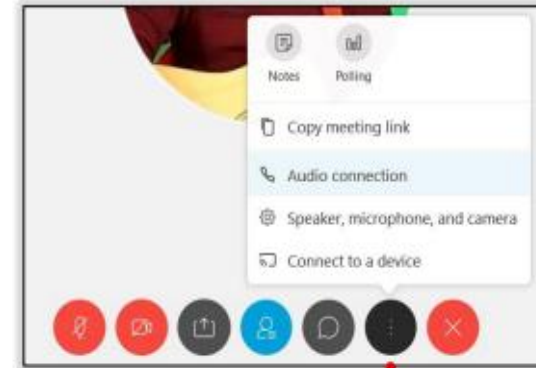


Select the drop box.

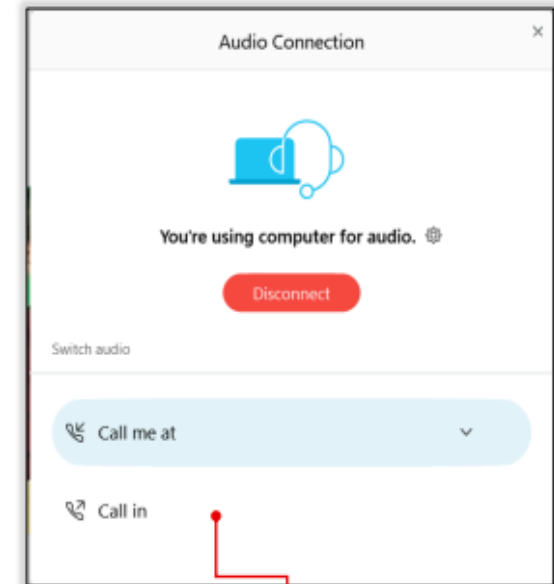


Select if you would like to send your message to **Everyone** or to a specific individual. If you select a specific individual, this will send the message privately so no one else in the meeting will see it.

Troubleshooting Audio



If you are having audio issues, click on the **ellipsis (...)**. You can test your **speakers, microphone, and camera** here, or select **Audio Connection** to change the way you are connected.



Select from the available options to change your audio connection.

WebEx Basics

For Dial-In Attendees

- Once the meeting starts, if you would like to leave a comment, press “*3” on your phone to raise your hand. Once you have raised your hand, you'll hear the prompt, "You have raised your hand to ask a question. Please wait to speak until the host calls on you."
- To hear a list of commands available during your meeting or event, press “**” on your phone.
- If you no longer want to leave a comment, or the host has already called on you, then press “*3” to lower your hand. You will hear a message, "You have lowered your hand".



In-Person Basics

For In-Person Attendees

- If you would like to comment, please indicate that on the sign-in sheet.
- The host will call your name when it is your turn to speak.
- We will alternate between in-person and online/phone comments every five speakers.

Ground Rules

Attendees will be asked to adhere to the surveillance public meeting code of conduct:

- ✓ Be respectful of diverse opinions and experiences.
- ✓ Be an active listener during presentations.
- ✓ Anyone exhibiting disruptive behavior, intimidation or aggression, may be muted or asked to leave. If so, they will be asked to provide comment online or by letter.
- ✓ Please keep comments under two minutes and related to technologies in focus to allow everyone an opportunity to speak.

City of Seattle's Definition of Surveillance

- Surveillance is defined as technologies that "observe or analyze the movements, behavior, or actions of identifiable individuals in a manner that is reasonably likely to raise concerns about civil liberties, freedom of speech or association, racial equity or social justice."
- Certain technologies, such as police body cameras and technologies for everyday office use, are excluded from the law.

Surveillance Impact Report Process

Current step



Public Comment Period


You can also comment online at: <https://seattle.gov/surveillance>

- Closed-Circuit Television (CCTV) System: <https://forms.office.com/g/y7jRUZSRNm>
- Acoustic Gunshot Location System (AGLS): <https://forms.office.com/g/MrNnnUbPSg>
- Real-Time Crime Center (RTCC): <https://forms.office.com/g/yxJeiSh1JR>
- Mail a comment to Surveillance & Privacy Program:
Seattle IT
PO Box 94709
Seattle, WA 98124

Public Hearing Format

- SPD will present the following proposed new technologies:
 - 1) Closed-Circuit Television (CCTV) System
 - 2) Acoustic Gunshot Location System (AGLS)
 - 3) Real-Time Crime Center (RTCC)
- Public Comment



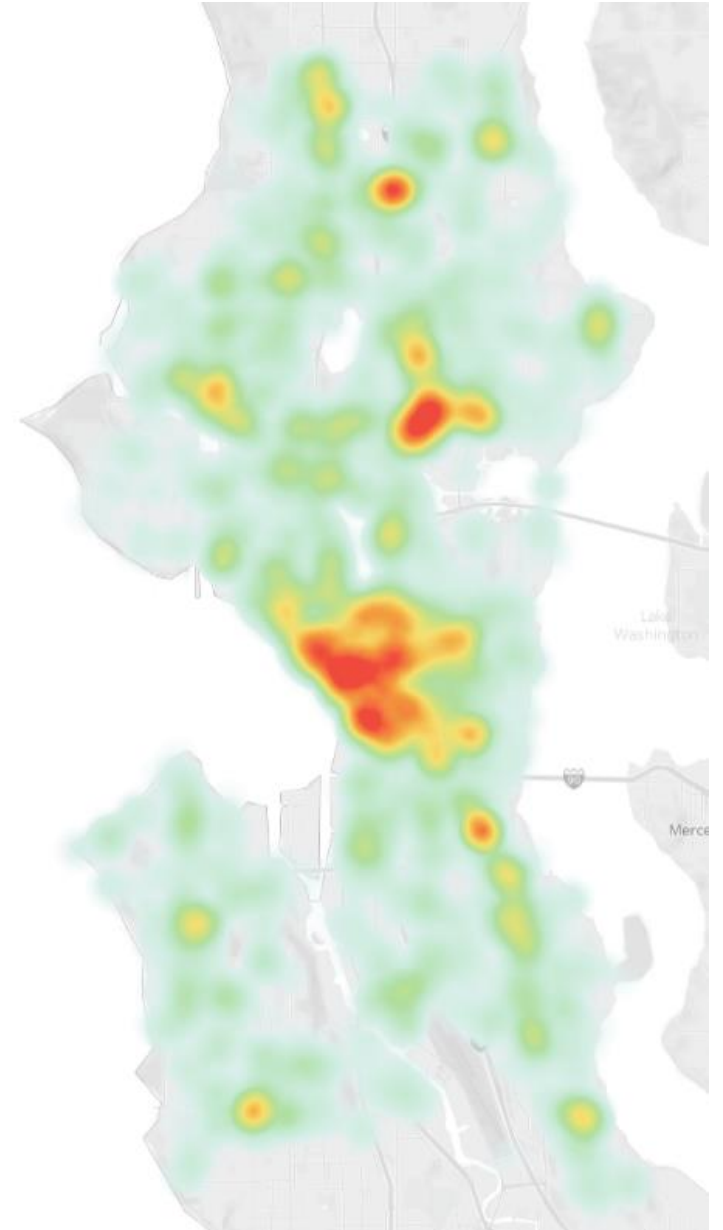
The background image shows the exterior of Seattle City Hall, a large stone building with the words "SEATTLE CITY HALL" carved into its facade. The image is overlaid with a semi-transparent blue filter. In the foreground, a modern glass and steel structure is visible, partially obscured by the blue overlay.

**Technology-Assisted Crime
Prevention Pilot Project**
Seattle Police Department

Purpose

Gun violence, human trafficking, and other persistent felony crimes are concentrated at specific geographic places in the city. This concentrated crime is often anchored at these places and require a holistic crime-prevention strategy.

This proposed Crime Prevention Technology pilot is one component to this overall strategy.



New Technologies to Help Deter and Detect Criminal Activity in Specific Locations

These technologies give us additional tools to address the continuing criminal behavior at these locations, together with:

- Increased police patrols;
- continued investments in community-based public safety initiatives such as violence interrupters;
- enhanced lighting;
- more frequent street and sidewalk cleaning; and
- other crime prevention efforts.



Seattle Police Department Mission

- **Prevent crime;**
- **Enforce the law; and**
- **Support quality public safety by delivering respectful, professional and dependable police services.**



Closed-Circuit Television (CCTV) System

What is the technology?

The Seattle Police Department (SPD) proposes closed-circuit television (CCTV) camera systems to help deter and detect criminal activity. The CCTV camera systems are proposed to be installed at specific locations where gun violence, human trafficking, and persistent felony crime is concentrated. The cameras will face toward the street, sidewalk, and other public areas and signs will be posted identifying their presence. Privately-owned security systems can also share video streams of public areas with SPD.



Closed-Circuit Television (CCTV) System

Why does SPD use the technology?

CCTV camera systems will assist investigators in collecting evidence related to serious and violent crimes, including homicides, assaults and other felony offenses. The CCTV system can aid investigators in identifying suspects, clearing the innocent, and removing deadly weapons from the street, thereby reducing the risk of harm to the public.



Closed-Circuit Television (CCTV) System

Data Collection

CCTV data is temporarily stored in the system for a maximum of 30 days unless it includes evidence of a crime and it is then stored in SPD's secure electronic evidence storage. [SPD Policy 7.010](#) governs the submission of evidence and requires that all collected evidence be documented in a General Offense Report.

Closed-Circuit Television (CCTV) System

Protections

- In order to minimize inadvertent collection of data, the CCTV cameras will be placed to capture events in plain view in public areas where as a matter of law no reasonable expectation of privacy exists.
- CCTV video recordings are automatically purged after 30 days unless the footage is collected as evidence in a criminal investigation. Additionally, the CCTV camera systems will maintain a complete audit log of activities which can be viewed at any time by the Office of the Inspector General for Public Safety.

Closed-Circuit Television (CCTV) System

Related Policies

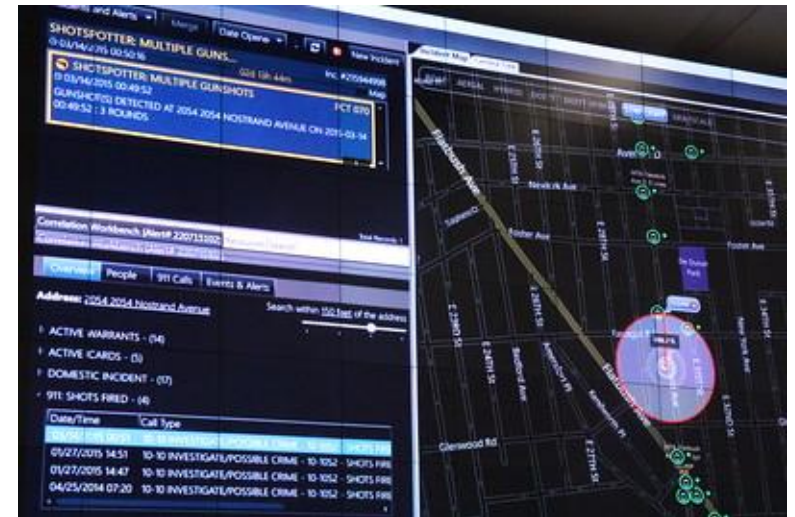
- CFR Title 28, Part 20 – Code of Federal Regulations, Criminal Justice Information
- RCW 42.56 Washington Public Records Act
- RCW 10.97 – Washington State Criminal Record Privacy Act
- WAC 446-20-260 Washington Administrative Code, Auditing of Criminal History Record Information Systems
- SMC 14.12 – City of Seattle Collection of Information for Law Enforcement Purposes
- SPD Policy 5.001 - Standards and Duties
- SPD Policy 5.002 - Responsibilities of Employees Concerning Alleged Policy Violations
- SPD Policy 5.140 - Bias-Free Policing
- SPD Policy 6.060 - Collection of Information for Law Enforcement Purposes
- SPD Policy 7.010 – Submitting Evidence
- SPD Policy 12.040 - Department-Owned Computers, Devices & Software
- SPD Policy 12.050 - Criminal Justice Information Systems
- SPD Policy 12.055 – Criminal Justice Research
- SPD Policy 12.080 – Department Records Access, Inspection & Dissemination
- SPD Policy 12.110 – Use of Department E-mail & Internet Systems
- SPD Policy 12.111 – Use of Cloud Storage Services



Acoustic Gunshot Location System (AGLS)

What is the technology?

The Seattle Police Department (SPD) proposes an Acoustic Gunshot Location System (AGLS) to accelerate the response capabilities of police and EMS personnel to aid victims, locate and preserve evidence and hold accountable those responsible for gun violence. AGLS utilizes microphones/sensors placed in a defined geographic area that are programmed to detect the sound of gunshots and locate and alert police to the incident.



Acoustic Gunshot Location System (AGLS)

Why does SPD use the technology?

An AGLS will assist investigators in collecting evidence related to incidents of gunfire and provide precise location information to responders. This information will direct officers and EMTs to a more precise location, enhanced collection of evidence that helps lead to justice for victims, and remove illegal firearms from the community.

Acoustic Gunshot Location System (AGLS)

Data Collection

Acoustic gunshot location systems capture audio above 120 decibels – well above the normal decibel level of human conversation. This audio is collected for a brief time before and after the incident, as well as during the incident. The system calculates the location of where the shot(s) occurred. [SPD Policy 7.010](#) governs the submission of evidence and requires that all collected evidence be documented in a General Offense Report.

Acoustic Gunshot Location System (AGLS)

Protections

- Only authorized SPD, OIG and OPA users can access the AGLS data while it resides on the devices. Access to the systems/technology is limited to authorized personnel via password-protected login credentials.
- Data may only be viewed or extracted for legitimate law enforcement purposes, as governed by SPD Policy 12.050 and will be securely stored in a cloud-based environment. The retention period is determined by whether the data holds evidentiary value. Data without evidentiary value is overwritten in approximately 30 days.

Acoustic Gunshot Location System (AGLS)

Related Policies

- CFR Title 28, Part 20 – Code of Federal Regulations, Criminal Justice Information
- RCW 42.56 Washington Public Records Act
- RCW 10.97 – Washington State Criminal Record Privacy Act
- WAC 446-20-260 Washington Administrative Code, Auditing of Criminal History Record Information Systems
- SMC 14.12 – City of Seattle Collection of Information for Law Enforcement Purposes
- SPD Policy 5.001 - Standards and Duties
- SPD Policy 5.002 - Responsibilities of Employees Concerning Alleged Policy Violations
- SPD Policy 5.140 - Bias-Free Policing
- SPD Policy 6.060 - Collection of Information for Law Enforcement Purposes
- SPD Policy 7.010 – Submitting Evidence
- SPD Policy 12.040 - Department-Owned Computers, Devices & Software
- SPD Policy 12.050 - Criminal Justice Information Systems
- SPD Policy 12.055 – Criminal Justice Research
- SPD Policy 12.080 – Department Records Access, Inspection & Dissemination
- SPD Policy 12.110 – Use of Department E-mail & Internet Systems
- SPD Policy 12.111 – Use of Cloud Storage Services



Real-Time Crime Center (RTCC)

What is the technology?

Real-Time Crime Center (RTCC) software provides a centralized location for real-time information and analysis. At its core, RTCC software integrates dispatch, camera, officer location, gunshot detection, 911 calls, records management system, and other information into one “pane of glass” (a single view). The software is used to alert real-time crime center staff to a serious criminal event, see multiple streams of information overlaid on a map view, and convey that information to officers who are responding in the field.



Real-Time Crime Center (RTCC)

Why does SPD use the technology?

Real-time crime center software helps provide situational awareness to increase officer and the public's safety and reactively investigate incidents. Having real-time, accurate information in one place helps increase reliability of the location of victims and suspects, enabling quicker aid and safer apprehension. Having better visual and spatial suspect information will help reduce unnecessary stops by officers, focusing their efforts on verified locations and accurate descriptions.



Real-Time Crime Center (RTCC)

Data Collection

- The RTCC software integrates data from other SPD systems like Closed-Circuit Television Cameras (CCTV), Acoustic Gunshot Location System (AGLS), Automated License Plate Readers (ALPR), Records Management System (RMS), dispatch, Geographic Information System (GIS), and 911 calls into a centralized location for real-time information and analysis.
- Access to the systems and technology is limited to authorized personnel via password-protected login credentials.

Real-Time Crime Center (RTCC)

Protections

- Only authorized SPD and OIG users can access the RTCC software platform. Access to the systems/technology is limited to authorized personnel via password-protected login credentials.
- Data in the RTCC system may only be viewed or extracted for legitimate law enforcement purposes, as governed by SPD Policy 12.050. The retention period is determined by whether the data holds evidentiary value. Data without evidentiary value is overwritten in approximately 30 days.



Real-Time Crime Center (RTCC)

Related Policies

- CFR Title 28, Part 20 – Code of Federal Regulations, Criminal Justice Information
- CFR Title 28, Part 23 – Code of Federal Regulations, Criminal Justice Systems Operational Policies
- RCW 42.56 - Washington Public Records Act
- RCW 9.73 – Violating Right of Privacy
- RCW 10.97 – Washington State Criminal Record Privacy Act
- WAC 446-20-260 Washington Administrative Code, Auditing of Criminal History Record Information Systems
- SMC 14.12 – City of Seattle Collection of Information for Law Enforcement Purposes
- SPD Policy 5.001 - Standards and Duties
- SPD Policy 5.002 - Responsibilities of Employees Concerning Alleged Policy Violations
- SPD Policy 5.140 - Bias-Free Policing
- SPD Policy 6.060 - Collection of Information for Law Enforcement Purposes
- SPD Policy 7.010 – Submitting Evidence
- SPD Policy 12.040 - Department-Owned Computers, Devices & Software
- SPD Policy 12.050 - Criminal Justice Information Systems
- SPD Policy 12.055 – Criminal Justice Research
- SPD Policy 12.080 – Department Records Access, Inspection & Dissemination
- SPD Policy 12.110 – Use of Department E-mail & Internet Systems
- SPD Policy 12.111 – Use of Cloud Storage Services



Data-Informed Policing

- Respond Quickly
- Investigate Thoroughly
- Identify Correctly
- Arrest Safely
- Prosecute Effectively



Performance and Disparity Measures

- The Seattle Police Department is conscious of the potential for disparate impacts technology can have on various communities.
- In addition to metrics to evaluate the effectiveness of these technologies, the Department's Performance Analytics and Research Unit will be monitoring data to identify unintended impacts on these communities, including over/underservice and will adjust its use to minimize/eliminate these impacts.

Public Comment



Please use the “raise hand” feature and we will call on individuals one at a time for on-line and over the telephone comments.



If you want to comment in-person, make sure you have indicated that on the sign-in sheet. Please wait for your name to be called.



Comments submitted will be logged and the responses will be posted online as part of the SIR.

What's Next?

- Public comment forms through March 22, 2024.
- Access answers to questions submitted during the public hearings at <https://seattle.gov/surveillance>.
- All comments collected will be included in the final SIR submitted to the Community Surveillance Working Group and then to the City Council.



Thank you for attending.

SEATTLE
CITY HALL