

GARBAGE REPORT

4th Quarter 2018

Seattle Public Utilities, Economic Services Section

Report Date: February 11, 2019

Phone: (206) 684-4143

Total City Tonnage Breakdown

Self Haul		
Q4 Self Haul Cars	807 Tons	12.2% increase vs. same period in 2017
2018 Cumulative Self Haul Cars:	3,699 Tons	6.2% increase vs. same period in 2017
Q4 Self Haul Trucks ¹ :	22,834 Tons	5.3% increase vs. same period in 2017
2018 Cumulative Self Haul Trucks:	97,128 Tons	1.4% increase vs. same period in 2017
2018 Cumulative Self Haul Cars & Trucks:	100,827 Tons	1.5% increase vs. same period in 2017
Residential		
Q4 Single Family:	14,592 Tons	2.0% increase vs. same period in 2017
2018 Cumulative Single Family:	57,725 Tons	2.1% increase vs. same period in 2017
Q4 Multi Family:	12,677 Tons	2.8% increase vs. same period in 2017
2018 Cumulative Multi Family:	49,760 Tons	2.0% increase vs. same period in 2017
Q4 Total Residential:	27,270 Tons	2.3% increase vs. same period in 2017
2018 Cumulative Total Residential:	107,485 Tons	2.1% increase vs. same period in 2017
Commercial		
Q4 Commercial:	34,169 Tons	2.4% decrease vs. same period in 2017
2018 Cumulative Commercial:	138,204 Tons	0.8% decrease vs. same period in 2017
Total Tons Collected		
Q4 Total Collected:	85,078 Tons	1.2% increase vs. same period in 2017
2018 Cumulative Total Collected:	346,516 Tons	0.8% increase vs. same period in 2017
Total Tons Delivered To Arlington²		
Q4 Total Delivered:	86,986 Tons	1.4% decrease vs. same period in 2017
2018 Cumulative Total Delivered:	354,344 Tons	0.1% increase vs. same period in 2017

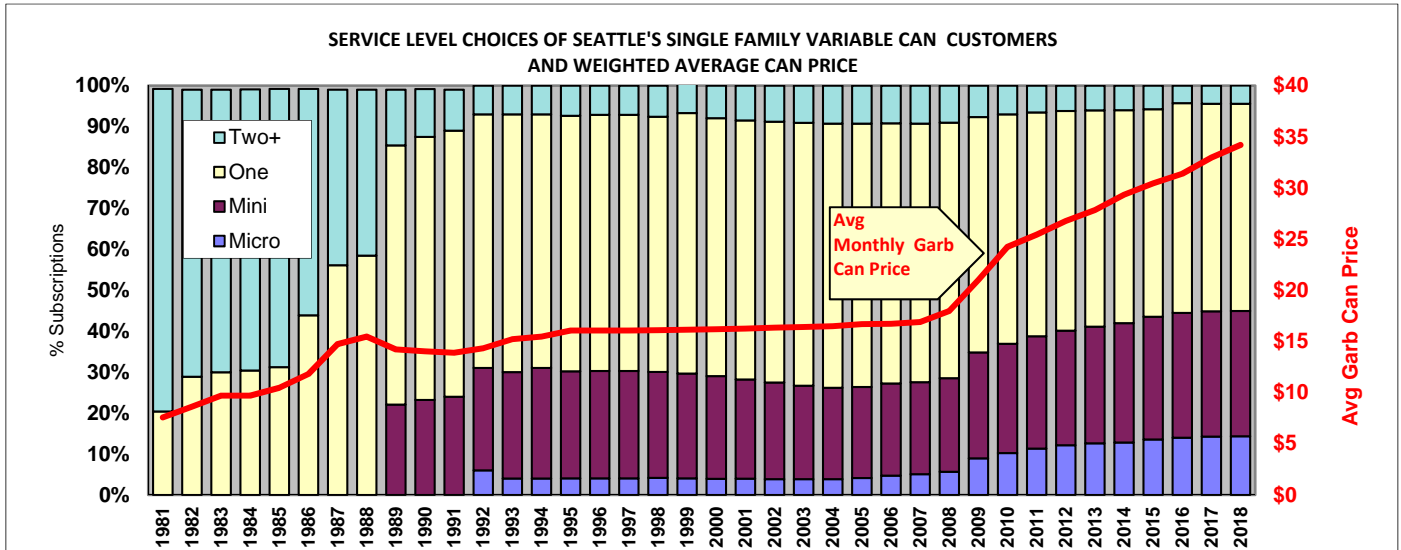
Selected Garbage Customer Statistics – December 2018

Single Family (4 or less households)		
# SF Households	166,935 HHs	1.2% increase vs. same period in 2017
Average Monthly Pounds Garbage per HH	57.8 Lbs	0.7% increase vs. same period in 2017
Multi Family (5 or more households)		
# MF Households	188,290 HHs	4.8% increase vs. same period in 2017
Average Monthly Pounds Garbage per HH	45.0 Lbs	2.6% decrease vs. same period in 2017

¹ An estimated 38% of the self-haul truck tons are commercial according to a waste stream sampling study conducted in 2012.

² Total tons collected not equal to total tons delivered due to operational factors.

Variable Can Service Levels for Single Family Can Customers



	Micro	Mini	One	Two+
1981			18.00%	82.00%
1982			29.00%	71.00%
1985			30.00%	70.00%
1986			54.00%	46.00%
1987			62.00%	38.00%
1989		24.00%	64.00%	12.00%
1992	6.00%	25.00%	62.00%	7.00%
1993	4.00%	26.00%	63.00%	7.00%
1994	4.00%	27.00%	62.00%	7.00%
1995	4.06%	26.15%	62.44%	7.35%
1997	4.04%	26.23%	62.59%	7.14%
1998	4.16%	25.88%	62.35%	7.61%
1999	4.06%	25.60%	63.62%	7.72%
2000	3.93%	25.08%	63.02%	7.97%
2001	3.96%	24.24%	63.32%	8.49%
2002	3.85%	23.62%	63.72%	8.82%
2003	3.84%	22.85%	64.23%	9.08%
2004	3.86%	22.31%	64.54%	9.30%
2005	4.13%	22.22%	64.37%	9.28%
2006	4.72%	22.49%	63.57%	9.21%
2007	5.05%	22.50%	63.17%	9.28%
2008	5.66%	22.85%	62.45%	9.04%
2009	8.93%	25.89%	57.51%	7.67%
2010	10.21%	26.69%	56.08%	7.02%
2011	11.31%	27.45%	54.72%	6.53%
2012	12.13%	27.98%	53.68%	6.21%
2013	12.62%	28.49%	52.85%	6.04%
2014	12.75%	28.66%	52.58%	6.02%
2015	12.90%	29.29%	51.83%	5.98%
2016	13.99%	30.49%	51.22%	4.30%
2017	14.02%	30.52%	51.15%	4.31%
2018	14.26%	30.20%	51.01%	4.53%

Monthly Variable Can Rates

Micro (12 gal)	\$23.30
Mini (19 gal)	\$28.55
One Can (32 gal)	\$37.15
Two Cans (64 gal)	\$74.30
Each Add'l Can	\$11.55

Residential Dumpster Service

Most Common Monthly Rate*
\$234.47

*This is the rate for a one cubic yard un-compacted container picked up once per week. Residential dumpster service rates vary based on the number and size of containers and the number of pickups per week

Self Haul Rates

Cars:	\$30 per trip
Trucks*:	\$145.00 per ton ((\$30.00 minimum))

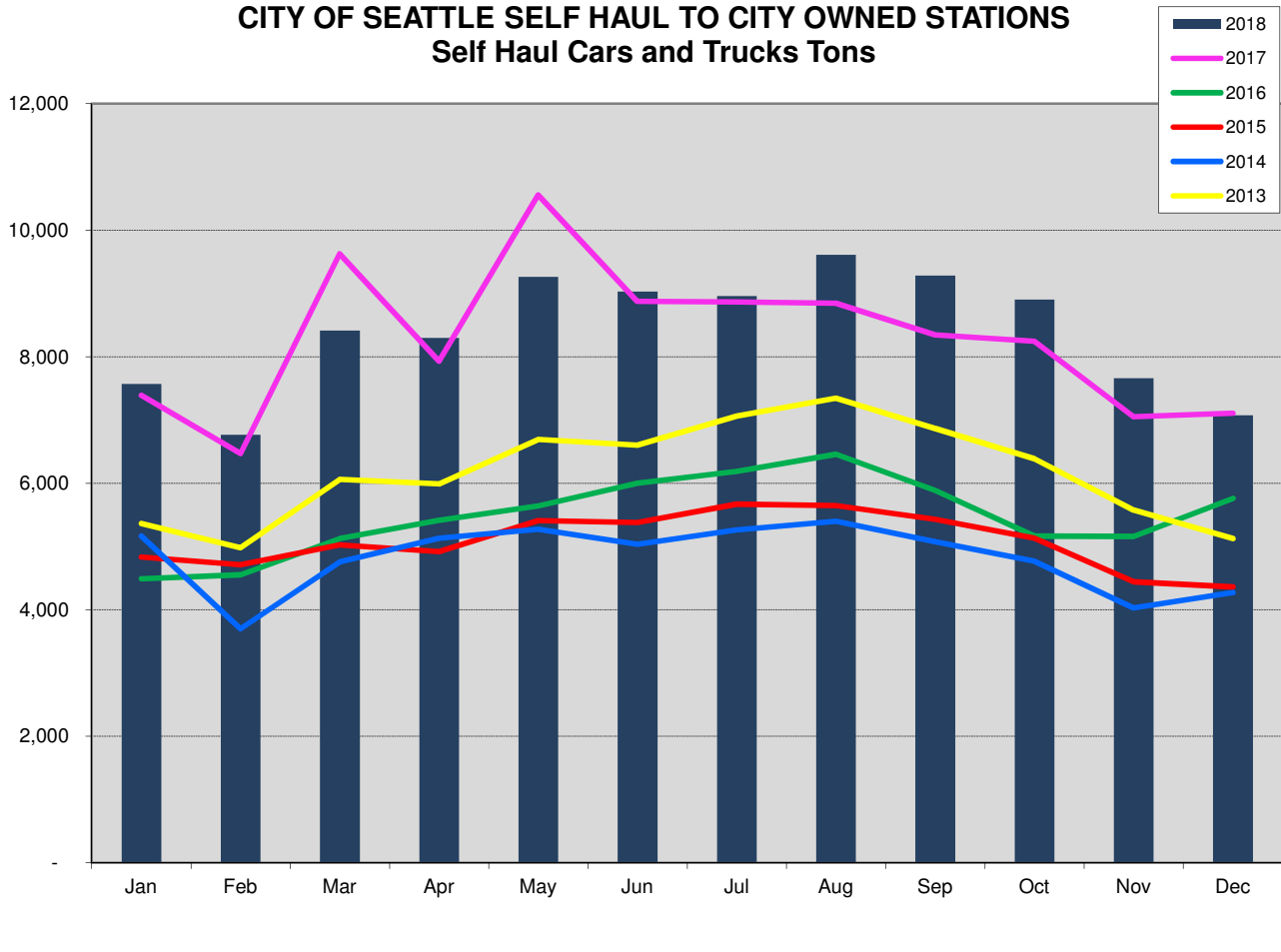
*Vans & pickup trucks pay the per ton truck rate.

CITY OF SEATTLE GARBAGE TONNAGE REPORT

		SELF HAUL			RESIDENTIAL						COMMERCIAL GARBAGE						GRAND								
		Self Haul ²³		Total	Recology/CleanScapes ¹⁹		Waste Management		TOTALS				Recology/CleanScapes		Rabanco		Waste Management		TOTAL	TOTAL					
Year	Month	Cars ²	Trucks	Self Haul	City Stations	Eastmont/ Lander ²⁰	City Stations	Eastmont	Single Family	SF ²⁴ Lbs/HH	Multi Family	MF ²⁴ Lbs/HH	Total Residential	City Stations	Eastmont	Recology ²²	City Stations	Lander ²¹	Eastmont	City Stations	Lander	Eastmont	COMMERCIAL	GARBAGE	
2017	1	224	7,165	7,389	4,384	0	4,177	0	4,607	56	3,953	46	8,561	5,198	0	85		730		4,699	265		10,978	26,928	
2017	2	205	6,264	6,469	4,015	0	3,895	0	3,945	48	3,965	46	7,910	4,901	0	142		863		4,282	416		10,604	24,983	
2017	3	264	9,364	9,628	4,666	0	4,456	0	4,892	60	4,230	49	9,122	5,668	0	163		839		4,968	557		12,195	30,945	
2017	4	295	7,632	7,926	4,110	0	3,803	0	4,341	53	3,571	41	7,913	5,278	0	136		725		4,644	428		11,211	27,050	
2017	5	327	10,229	10,556	4,837	0	4,552	0	5,082	62	4,307	49	9,389	5,725	0	25		831		5,080	394		12,056	32,000	
2017	6	352	8,524	8,876	4,708	0	4,433	0	4,961	60	4,181	48	9,142	5,734	0	25		823		4,980	431		11,992	30,010	
2017	7	392	8,473	8,865	4,477	0	4,177	0	4,694	57	3,960	45	8,654	5,381	0	182		787		4,713	336		11,399	28,918	
2017	8	352	8,491	8,843	4,835	0	4,471	2	5,051	61	4,256	48	9,308	5,938	0	186		837		5,140	414		12,515	30,665	
2017	9	354	7,991	8,345	4,527	0	4,140	1	4,656	57	4,013	45	8,669	5,362	0	205		775		4,539	483		11,364	28,377	
2017	10	265	7,976	8,241	4,676	0	4,301	0	4,763	58	4,213	47	8,977	5,456	0	25		805		4,817	591		11,695	28,913	
2017	11	227	6,821	7,048	4,695	0	4,420	0	4,945	60	4,170	46	9,115	5,387	0	183		842		5,066	564		12,042	28,205	
2017	12	228	6,879	7,107	4,433	0	4,122	0	4,603	56	3,952	44	8,555	5,170	0	81		840		4,675	501		11,266	26,928	
2018	1	240	7,331	7,571	4,899	0	4,609	0	5,127	62	4,381	49	9,508	5,482	0	88		937		5,567	539		12,613	29,692	
2018	2	225	6,542	6,768	4,074	1	3,805	0	4,192	51	3,687	41	7,879	4,720	3	135		712		4,259	429		10,257	24,904	
2018	3	291	8,121	8,412	4,576	0	4,229	0	4,733	57	4,073	45	8,805	5,275	0	26		787		4,830	543		11,461	28,678	
2018	4	305	7,991	8,296	4,528	0	4,150	0	4,605	55	4,073	45	8,678	5,201	0	136		771		4,712	498		11,318	28,292	
2018	5	378	8,882	9,260	4,888	0	4,534	2	5,122	61	4,303	47	9,425	5,546	0	80		822		4,970	462		11,879	30,564	
2018	6	363	8,666	9,029	4,663	0	4,255	0	4,817	58	4,101	45	8,918	5,429	0	169		774		4,703	532		11,608	29,555	
2018	7	393	8,565	8,958	4,636	28	4,050	368	4,916	59	4,167	45	9,082	5,250	303	145		813		4,395	914		11,820	29,860	
2018	8	356	9,255	9,611	4,934	0	4,573	0	5,103	61	4,404	47	9,507	5,765	0	89		838		5,170	472		12,334	31,452	
2018	9	340	8,943	9,283	4,428	0	3,985	1	4,519	54	3,895	42	8,413	5,037	0	157		731		4,346	474		10,745	28,441	
2018	10	298	8,606	8,904	4,955	0	4,494	3	5,033	60	4,419	47	9,452	5,584	0	31		820		5,042	435		11,913	30,269	
2018	11	248	7,413	7,662	4,726	0	4,377	0	4,915	59	4,188	45	9,102	5,175	0	107		823		4,574	455		11,134	27,898	
2018	12	261	6,813	7,074	4,530	0	4,185	0	4,644	56	4,171	43	8,715	5,161	0	108		834		4,579	440		11,122	26,912	
Total 2018		3,699	97,128	100,827	55,836	29	51,247	374	57,725	58	49,760	45	107,485	63,626	306	1,270		9,662		57,148	6,192		138,204	346,516	
Total 2017		3,483	95,808	99,291	54,364	0	50,947	4	56,541	57	48,773	46	105,315	65,197	0	1,439		9,697		57,604	5,381		139,317	343,923	
Total 2016		2,236	63,604	65,840	53,258	0	50,437	40	54,298	55	49,437	55	103,736	65,528	0	1,746		9,169		56,426	5,860		138,729	308,305	
Total 2015		2,190	58,748	60,938	52,231	21	49,713	8	52,529	53	49,443	57	101,972	66,831	38	5,870		5,884		55,394	5,539		139,557	302,467	
Total 2014		2,487	55,360	57,847	52,344	230	55,396	241	59,772	61	52,439	63	112,211	66,888	2,431	3,378		5,680		55,804	5,275		139,457	309,515	
Total 2013		6,569	67,450	74,018	52,050	3,667	50,889	4,233	60,302	62	50,537	63	110,838	35,955	31,556			5,623		33,975	25,233		132,343	317,199	
Total 2012		6,285	64,190	70,474	52,651	3,007	53,052	2,709	60,906	62	50,514	65	111,420	41,082	27,298			5,883		38,527	21,300		134,089	315,984	
Total 2011		6,206	64,827	71,033	54,180	2,320	54,935	1,339	62,779	64	49,993	65	112,773	41,090	26,773			5,519		39,170	22,984		135,536	319,342	
Total 2010		6,230	73,062	79,292	53,799	3,587	54,995	1,715	64,309	66	49,788	66	114,097	37,844	32,486			2,742		42,042	27,066		142,180	335,569	
Total 2009		6,354	75,210	81,565	57,760	4,730	52,243	3,992					118,725	31,939	24,020			13,703	4,206	9,278	40,627	51	27,574	151,398	351,688
Total 2008		5,750	85,144	90,894	72,125	7,324	47,111	660					127,219	63,903	15,523	38,414		31,292		0	27,658		176,791	394,904	
Total 2007		6,755	100,343	107,098	73,433	9,827	49,918	248					133,426	55,453	77,257	693		32,858		18,262	14,495		199,018	439,542	
Total 2006		7,711	95,717	103,428	72,436	10,551	49,718	969					133,674	59,890	76,187			33,239		27,451	4,437		201,205	438,308	
Total 2005		7,487	93,011	100,499	78,520	4,390	51,638	9					134,557	59,107	81,223			35,561		24,297	4,658		205,846	440,902	
Total 2004		7,723	92,043	99,766	77,887	8,398	53,125	3,118					142,527	32,492	114,374			20,547		14,329	34,370		216,112	458,405	
Total 2003		7,386	93,845	101,232	83,943	3,596	54,147	1,845					143,532	28,843	113,688			999			69,717		213,247	458,010	
Total 2002		7,353	95,537	102,891	86,806	406	55,145	554					142,910	31,135	112,409			8,237			65,413		217,195	462,996	
Total 2001		6,818	95,487	102,305	87,793	539	56,216	9					144,557										228,405	475,268	
Total 2000		6,323	95,560	101,883	77,300	869	67,309	368					145,845										91,722	228,417	476,145
Total 1999 ¹⁰		6,989	97,378	104,367	46,595		101,123						147,718										85,952	225,348	477,433
Total 1998		16,883	81,136	98,019	43,621	2,230	100,083						145,934										80,217	213,646	457,594
Total 1997		15,750	81,396	97,146	47,290	16	100,632						147,938										79,053	208,670	453,754
Total 1996 ¹²		13,777	70,091	83,868	47,784	962	95,543						144,289										71,448	194,969	423,127
Total 1995 ⁸		13,279	71,208	84,487	48,626	572	100,926						150,124										75,581	196,702	431,313
Total 1994		13,064	74,291	87,354	46,922	2,043	101,123						150,089										75,144	194,767	432,210
Total 1993		8,665	76,853	85,518	47,269		96,859						144,127										73,915	200,591	430,236
Total 1992		8,178	80,742	88,920	45,475		96,679						142,154										68,742	194,338	425,412
Total 1991		7,947	68,576	76,523	44,228		96,494						140,722										74,389	222,257	439,502
Total 1990 ³		7,253	73,939	81,192	44,249		96,278						140,528										157,664	236,125	457,845
Total 1989 ^{4,5}		6,919	58,720	65,639	45,338		97,884						143,222										75,513	196,542	405,403
Total 1988 ⁶		11,810	75,557	87,367	96,405		83,564						179,968										72,680	198,174	465,509
Total 1987 ⁷		13,622	88,147	101,769	99,159		99,685						188,844										55,212	225,915	516,528
Total 1986		25,278	105,442	130,720	100,190		90,396						190,586										50,947	202,136	523,442

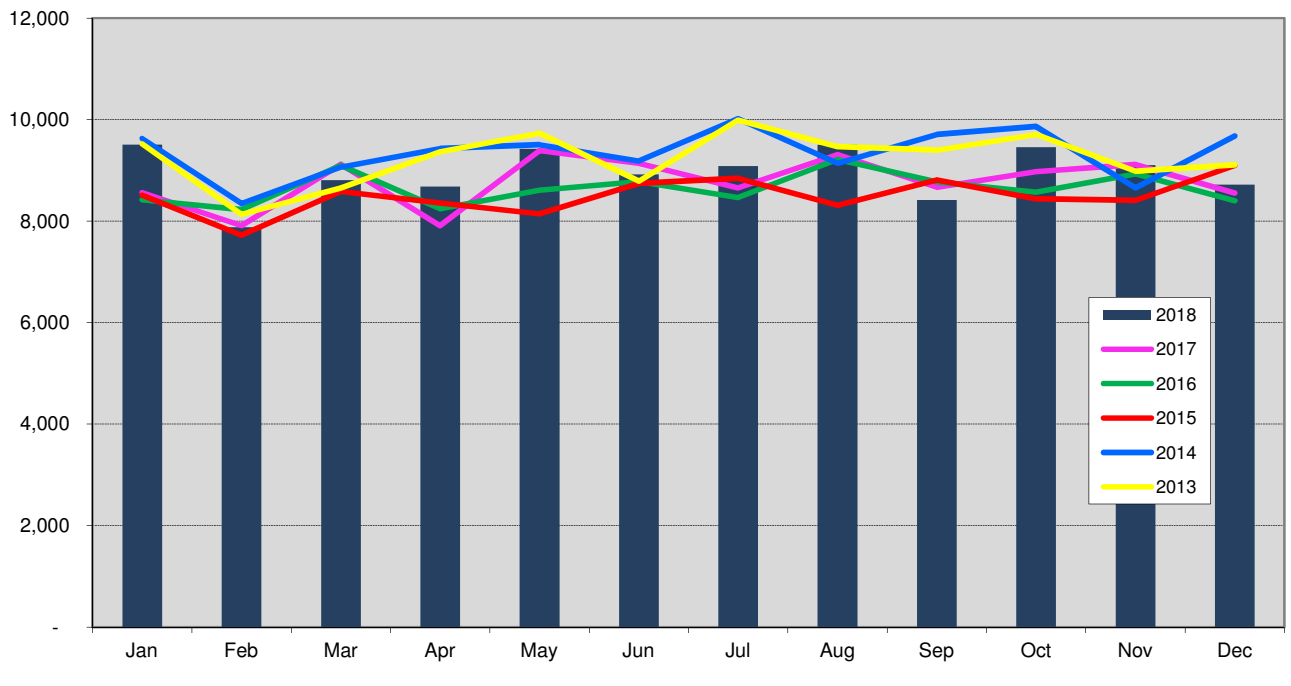
1

CITY OF SEATTLE SELF HAUL TO CITY OWNED STATIONS Self Haul Cars and Trucks Tons

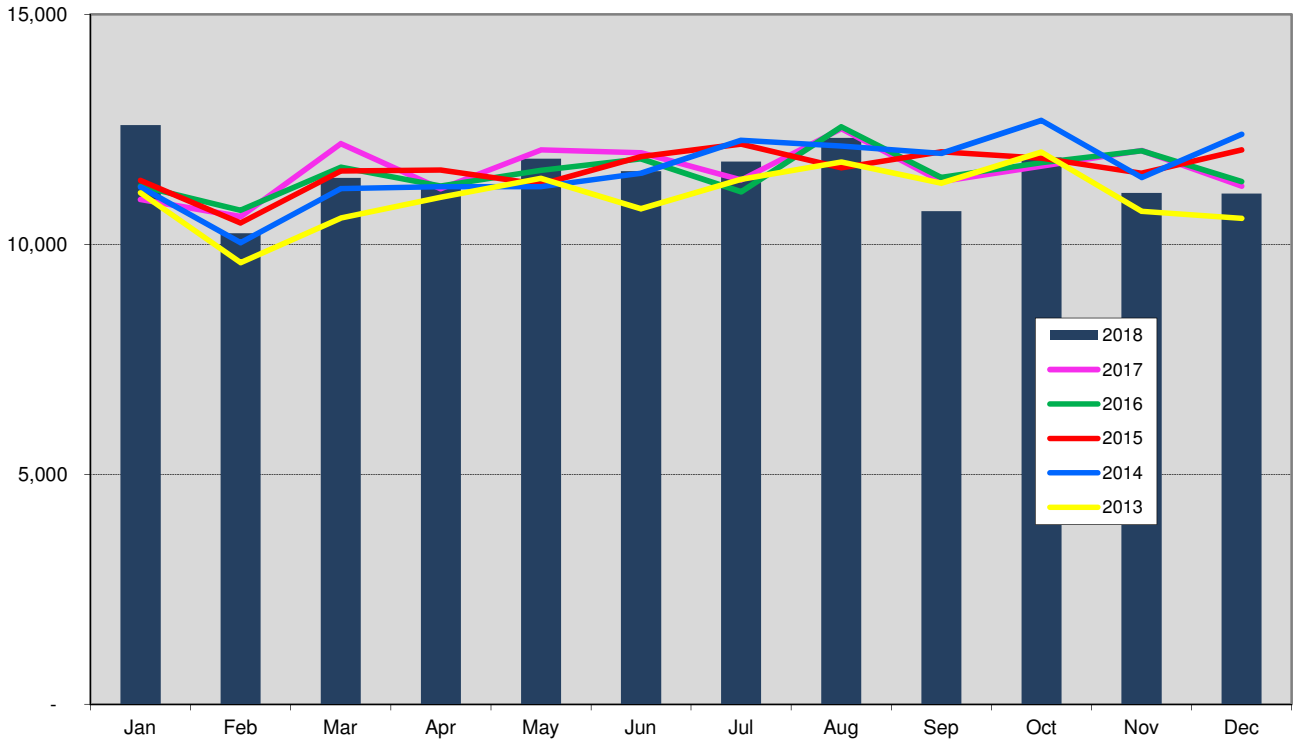


The North Transfer Station was closed from January 2014 - November 2016 for a rebuild.

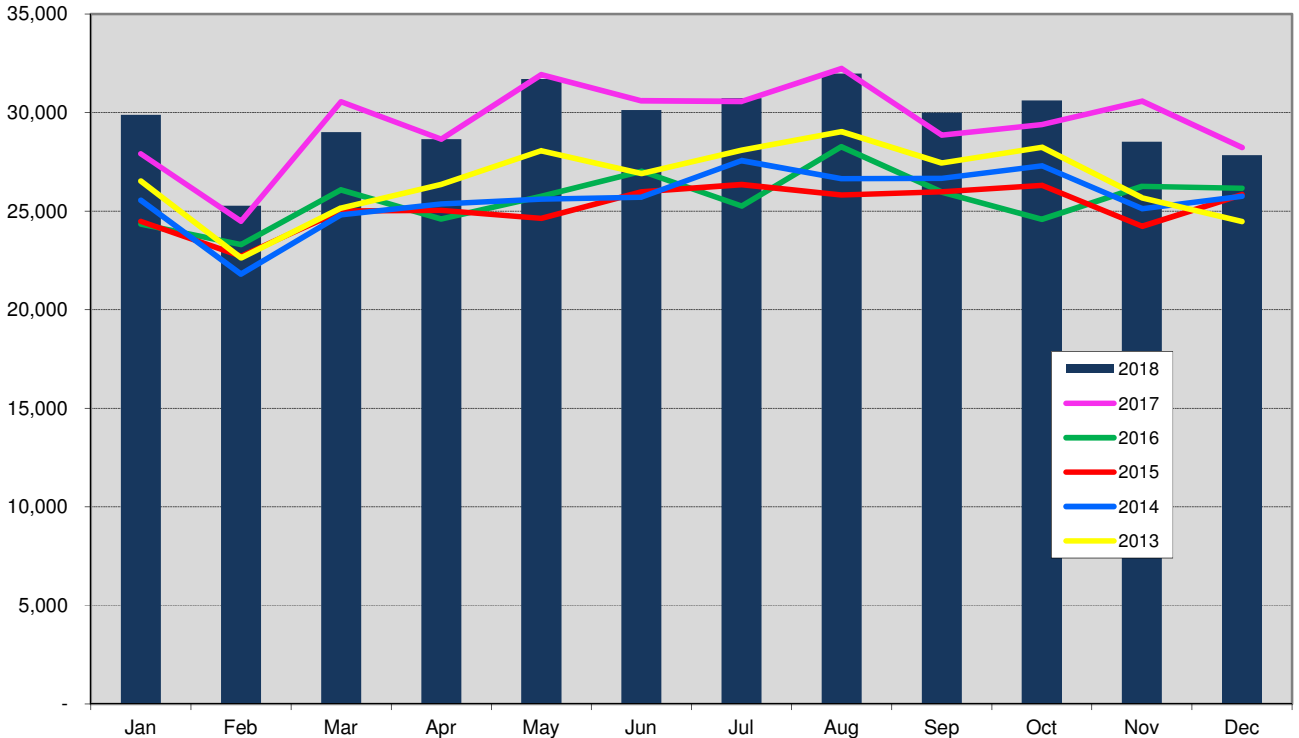
CITY OF SEATTLE RESIDENTIAL COLLECTION Total City Tons



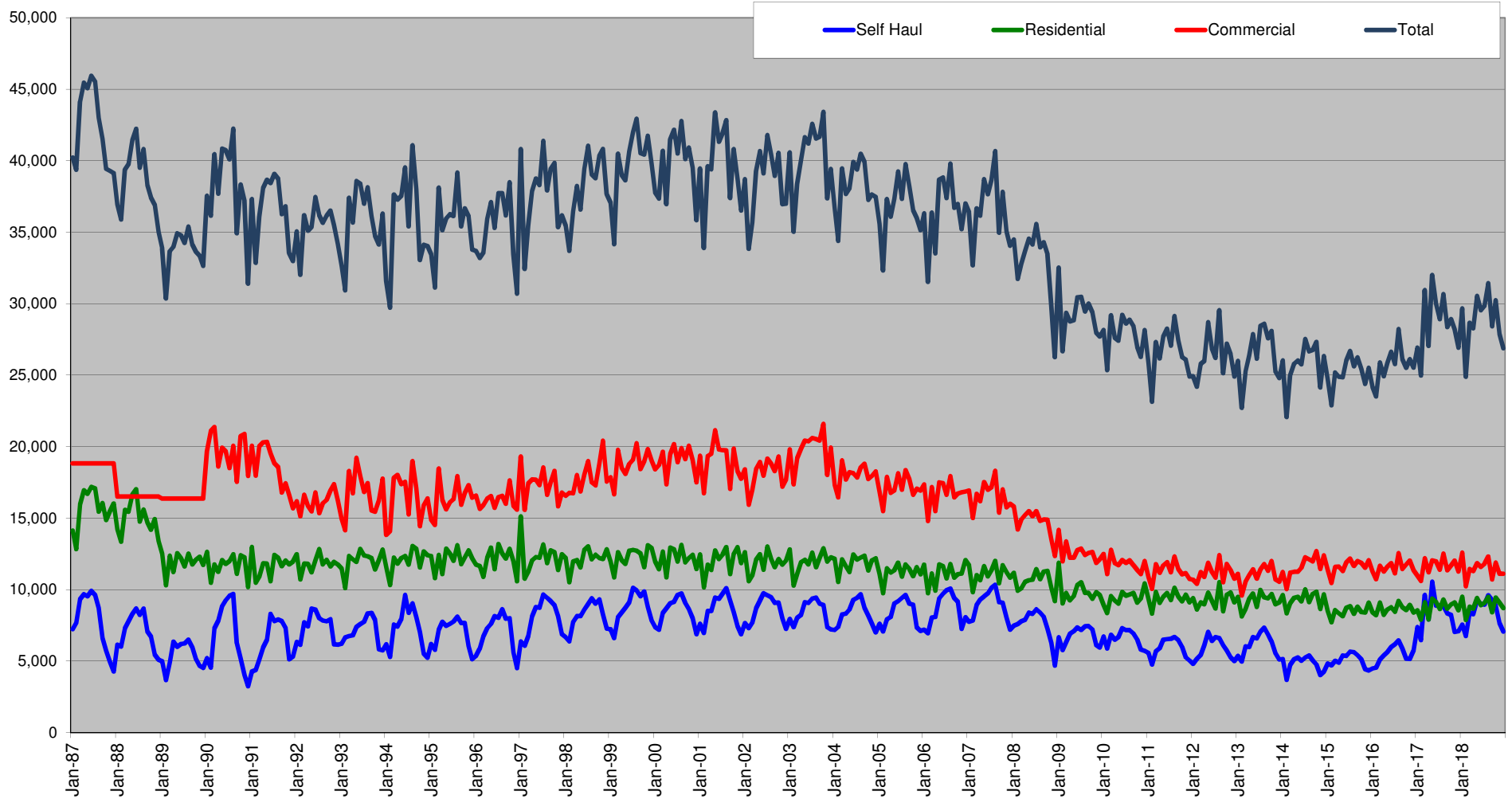
CITY OF SEATTLE Commercial Garbage Total Tons Collected



CITY OF SEATTLE TOTAL OUTBOUND TONS Total Tons Delivered to Arlington Landfill

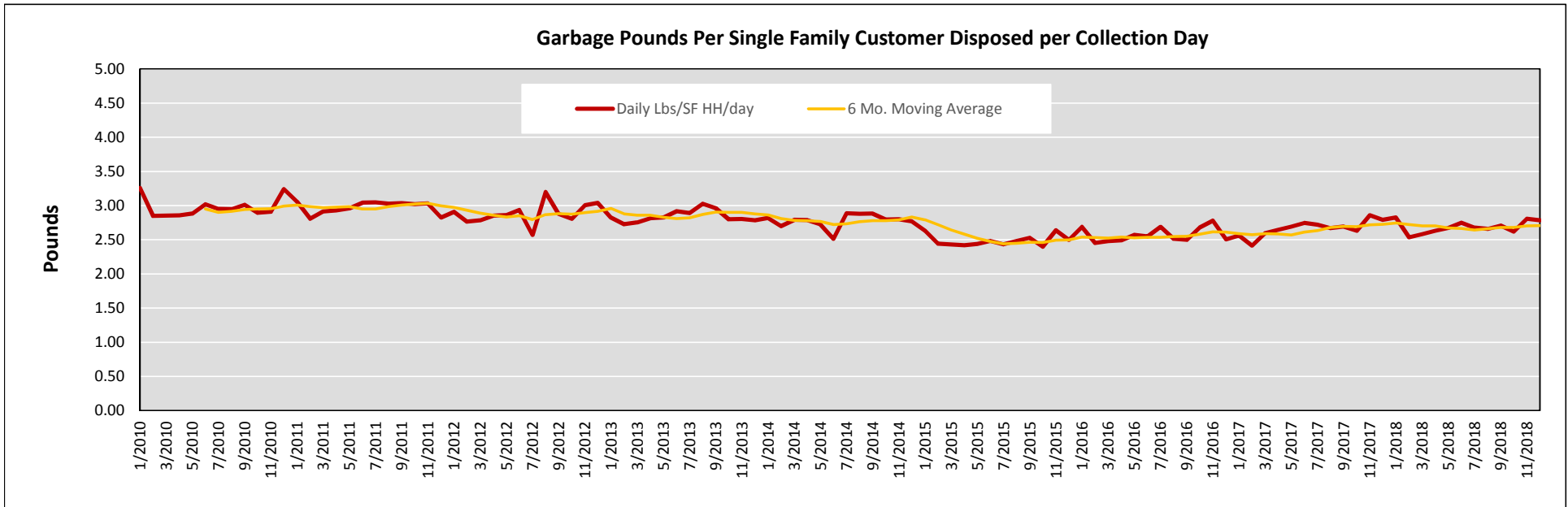


City of Seattle Garbage Disposal



Monthly commercial tonnage for 1987-1989 estimated from annual data.

Effects of the 2015 ban on organics in the garbage container.



Notes: April 2009 Organics collection changes from biweekly to weekly collection and is mandatory for single family customers
 September 2011 Organics service is mandatory for multi family customers
 January 2015 Organics are banned from the garbage for all customers