

Tonnage by Sector

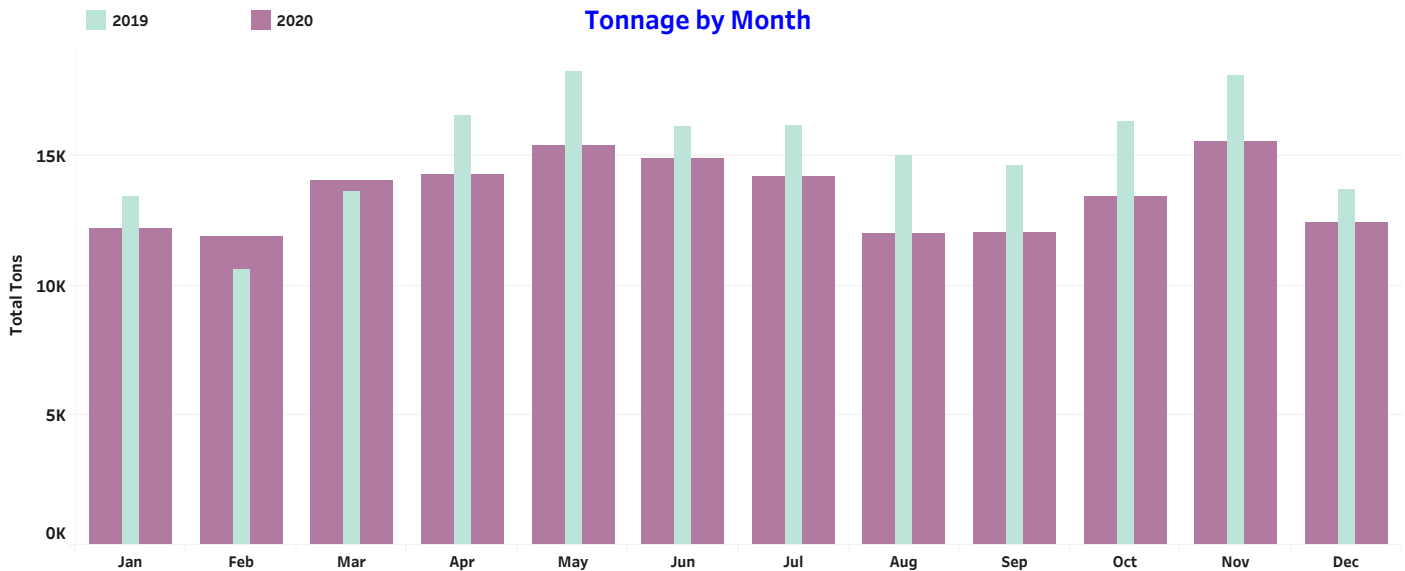
	Self Haul	Single Family	Multi Family	Residential	Commercial	Total
Tonnage	1,715	25,566	1,000	26,566	13,072	41,353
% Difference vs 2019	8.326%	12.74%	-13.78%	11.45%	-42.32%	-14.00%

Single Family Subscription by Premises

	13 Gal	13 Gal %	32 Gal	32 Gal %	90 Gal	90 Gal %	Total Signed Up	Total Signed Up %	Exempt	Exempt %
Dec	35,308	23.32%	27,133	17.92%	89,677	59.22%	151,421	98.13%	3,339	2.16%

Multi Family Subscription by Premises

	Curb No Liner	Curb No Liner%	Curb Liner	Curb Liner%	Onsite Liner	Onsite Liner%	Total Signed Up	Total Signed Up%	Exempt	Exempt%
Nov	1,411	21.91%	3,663	56.89%	1,494	23.20%	157,758	95.99%	91	1.36%



Basics of Self Haul Program

SERVICE: Two city owned recycle and disposal stations accept organics during regular operating hours. Yard waste must be separated and cannot be disposed of as garbage.
FEES: Cars: \$20.00 per trip (compared to \$30.00 per trip for garbage).
Trucks: \$110.00 per ton (compared to \$145.00 per ton for garbage).

Basics of Commercial Program

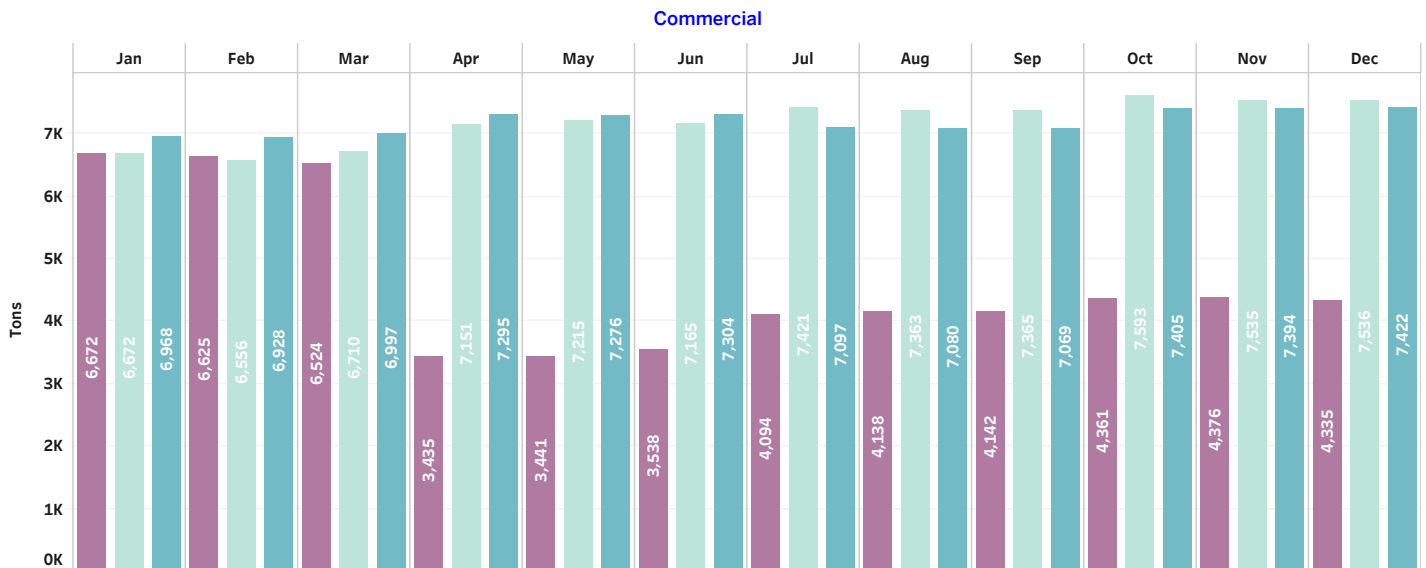
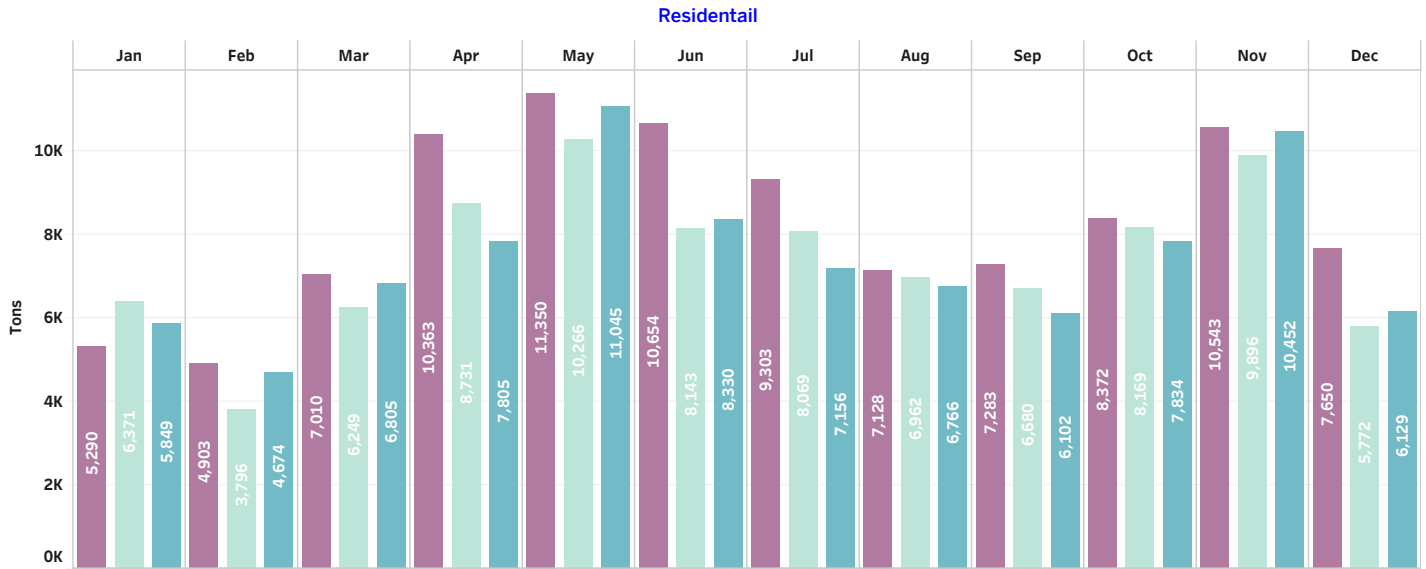
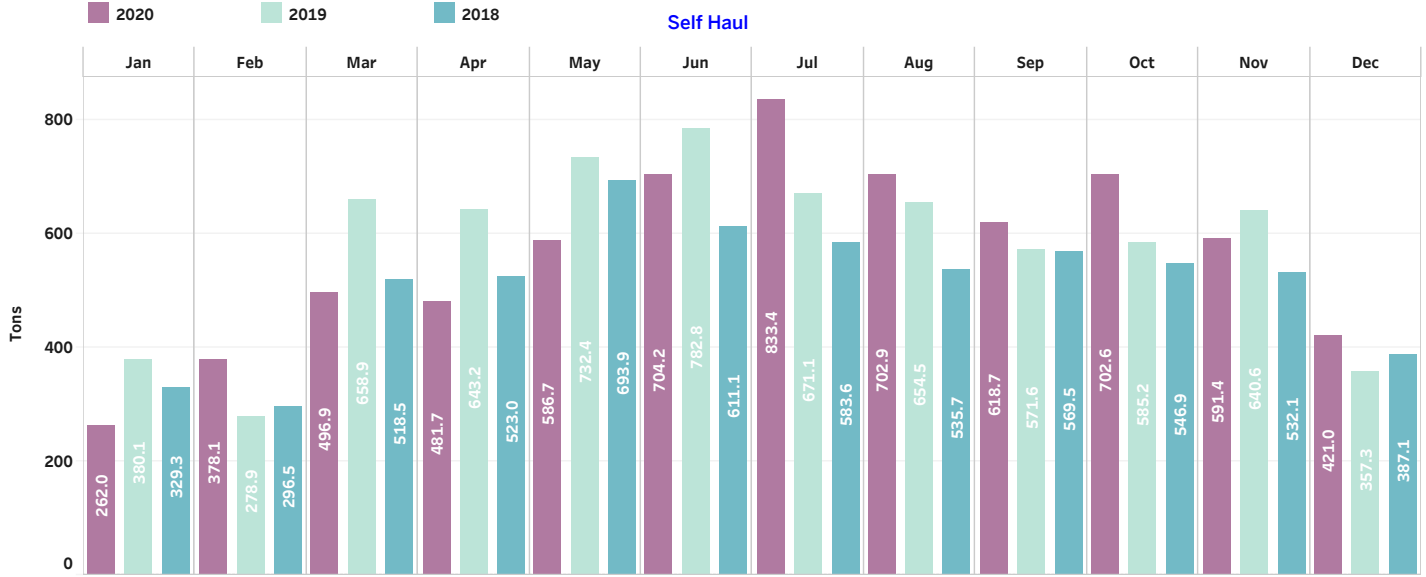
SERVICE: Seattle has contracts with Waste Management and Recology/Cleanscapes for garbage and organics service. Customers can sign up with their contract garbage hauler for organics service. In addition, Seattle commercial customers can choose organics service through a hauler outside of the city contracts. This is referred to as "noncontract" organics service.
MATERIALS: All food scraps (including meat, fish, dairy and produce), food soiled paper, waxed cardboard, and yard debris. **Beginning January 1, 2015 all organics materials are not allowed in the garbage.**
FEES: Approximately 32% below garbage prices. (Non-contract prices vary.)

Basics of Residential Organics Program

Service: Beginning April 2009, collection frequency increased from bi-weekly to weekly pickup. All single family customers are required to sign up for organics service or request an exemption if they have backyard food waste composting. As of September 2011 multifamily and multiplex customers are also required to sign up for organics service. Multifamily customers can sign up for residential can/cart curbside service or onsite can/cart service. (Curbside service requires the customer to bring their container to the curb; onsite service does not require the customer to move their container.) Liner service, which includes a biodegradable plastic liner placed in the can or cart after each collection, is also available to multifamily customers.

MATERIALS: Leaves, grass clippings, prunings 4 inches or less in diameter. Starting in April 2009, all food waste and food soiled paper are allowed in the cart. As of January 1, 2015, Organics, including food waste, compostable paper, and yard waste are not allowed in the curbside garbage container.

Fees: Monthly Variable Can/Cart Prices: 13 gal = \$6.15, 32 gal = \$9.25, 96 gal = \$11.85, Extra Bundle = \$5.90

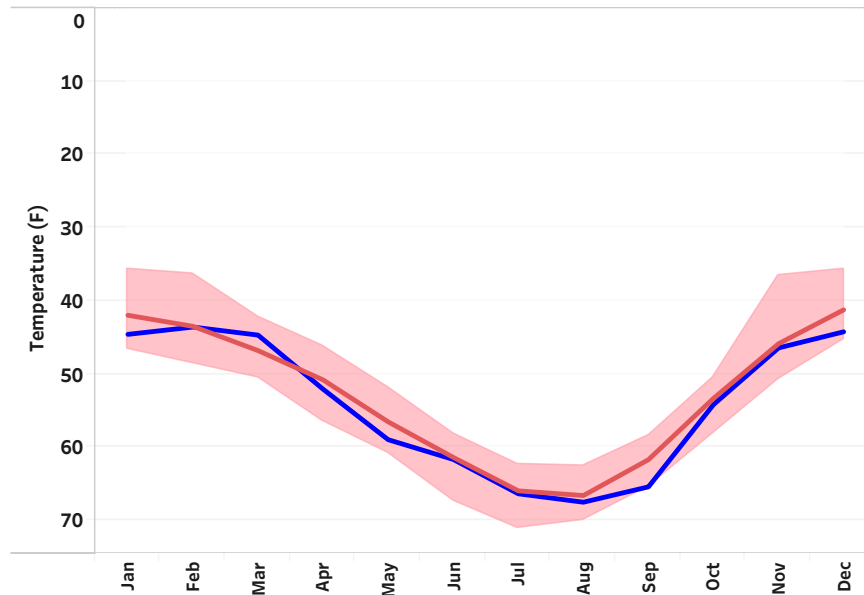
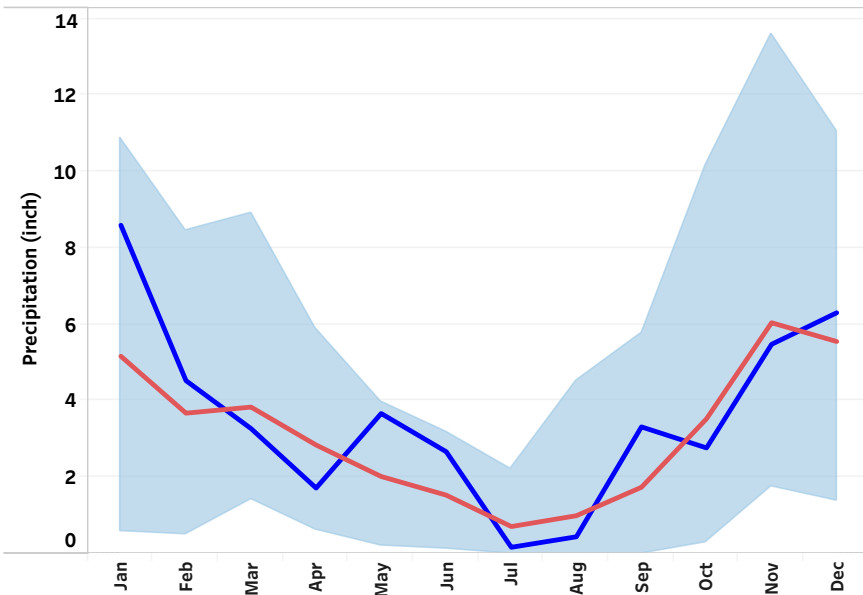
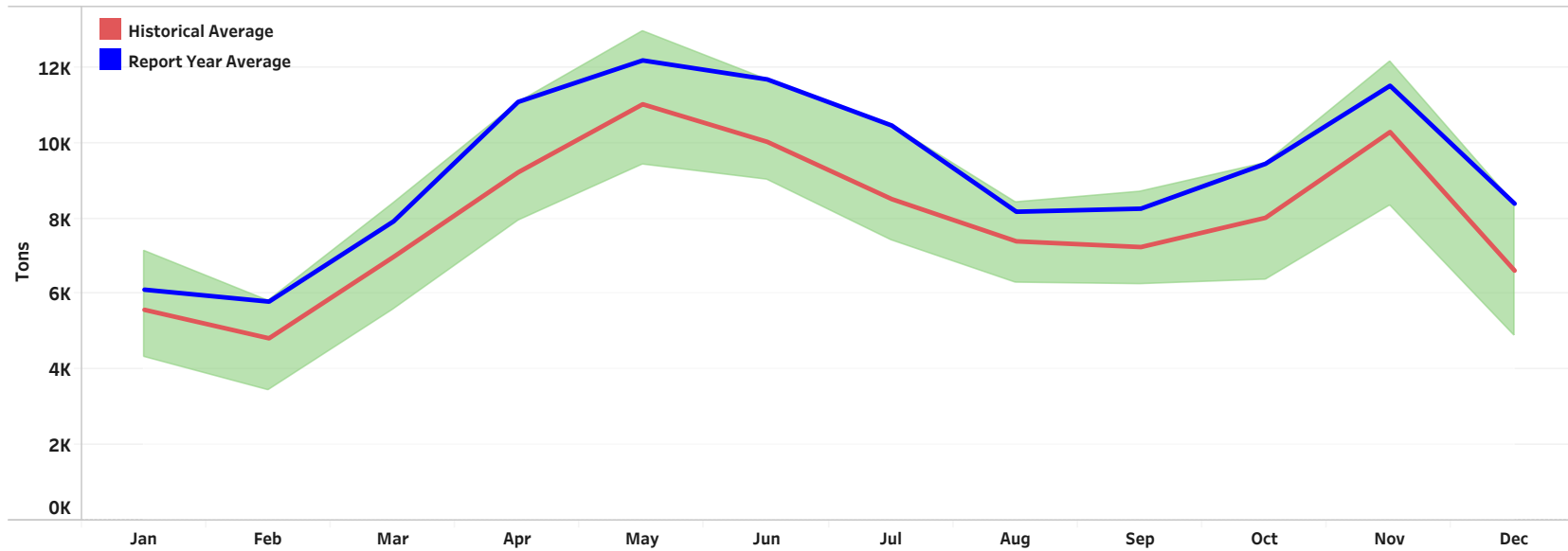


Organics Report

Solid Waste Planning & Program Management
SPU_SW_Reports@seattle.gov

Weather Impact on Organic Tonnage

Q4
2020



Tonnage and Sign-up Accounts

Q4
 2020

Tonnage						Residential Subscription						Commercial Accounts				
	Self Haul	Single Family	Multi Family	Commercial	Total		Single Family	Multi Family	Residential	Residential Tons	Lbs/Accts		CONTRACT	NON Contract	Total	
2020	Dec	421	7,337	313	4,335	12,406	Dec	151,421	6,452	157,873	7,650	97	Dec	2,370	1,957	4,327
	Nov	591	10,172	372	4,376	15,511	Nov	151,319	6,439	157,758	10,543	134	Nov	2,391	1,958	4,349
	Oct	703	8,057	316	4,361	13,436	Oct	151,243	6,431	157,674	9,372	106	Oct	2,415	1,956	4,371
	Sep	619	6,971	312	4,142	12,044	Sep	151,151	6,426	157,577	7,263	92	Sep	2,420	1,954	4,374
	Aug	703	6,833	294	4,138	11,969	Aug	151,035	6,410	157,445	7,128	91	Aug	2,426	1,955	4,421
	Jul	833	8,977	327	4,094	14,221	Jul	150,960	6,411	157,371	9,303	118	Jul	2,430	1,955	4,425
	Jun	704	10,318	336	3,538	14,896	Jun	150,839	6,420	157,259	10,654	135	Jun	2,428	2,010	4,438
	May	587	11,011	340	3,441	15,379	May	150,741	6,409	157,150	11,350	144	May	2,399	2,008	4,407
	Apr	482	10,053	310	3,435	14,279	Apr	150,631	6,374	157,005	10,363	132	Apr	2,422	1,999	4,421
	Mar	497	7,716	294	6,524	14,031	Mar	150,551	6,387	156,938	7,010	89	Mar	2,534	2,054	4,588
	Feb	378	4,615	288	6,625	11,907	Feb	150,385	6,374	156,759	4,903	63	Feb	2,514	2,055	4,569
	Jan	262	4,967	323	6,672	12,223	Jan	150,244	6,373	156,617	5,290	68	Jan	2,519	2,033	4,552
Total	6,780	96,028	3,822	55,681	162,311	AVG	150,877	6,409	157,286	8,321	1,270	Nov	2,503	2,031	4,534	
2019	Dec	357	5,425	347	7,536	13,665	Dec	150,180	6,391	156,571	5,772	74	Dec	2,516	2,033	4,549
	Nov	641	9,486	410	7,535	18,072	Nov	150,050	6,389	156,439	9,896	127	Nov	2,508	2,045	4,553
	Oct	585	7,766	404	7,593	16,347	Oct	149,960	6,385	156,345	8,169	105	Oct	2,518	2,048	4,566
	Sep	572	6,341	339	7,365	14,616	Sep	149,851	6,366	156,217	6,680	86	Sep	2,509	2,035	4,544
	Aug	655	6,589	373	7,363	14,980	Aug	149,765	6,348	156,113	6,962	89	Aug	2,090	2,034	4,124
	Jul	671	7,687	373	7,421	16,161	Jul	149,601	6,319	155,920	8,069	104	Jul	2,078	2,436	4,514
	Jun	783	7,782	361	7,165	16,091	Jun	149,527	6,364	155,891	8,143	104	Jun	2,076	2,420	4,496
	May	732	9,857	409	7,215	18,214	May	149,398	6,355	155,753	10,266	132	May	2,072	2,423	4,495
	Apr	643	8,382	349	7,151	16,525	Apr	149,204	6,313	155,517	6,249	80	Apr	2,079	2,417	4,496
	Mar	659	5,922	327	6,710	13,618	Mar	149,105	6,327	155,442	6,249	80	Mar	2,071	2,428	4,499
	Feb	279	3,553	243	6,556	10,631	Feb	149,010	6,331	155,341	3,796	49	Feb	2,066	2,431	4,497
	Jan	380	6,041	329	6,672	13,423	Jan	148,903	6,328	155,231	1,112	12	Jan	2,073	2,415	4,488
Total	6,957	84,842	4,263	86,282	182,344	AVG	149,546	6,352	155,898	7,425	1,143	Dec	2,059	2,474	4,533	
2018	Dec	287	7,322	327	7,322	15,329	Dec	148,836	6,335	155,171	6,129	79	Dec	2,053	2,472	4,525
	Nov	532	10,036	416	7,394	18,377	Nov	148,744	6,323	155,067	10,452	135	Nov	2,050	2,472	4,522
	Oct	547	7,504	330	7,405	15,786	Oct	148,710	6,326	155,036	7,834	101	Oct	2,025	2,473	4,498
	Sep	570	5,833	269	7,069	13,740	Sep	148,652	6,318	154,970	6,102	79	Sep	2,010	2,475	4,485
	Aug	536	6,466	320	7,080	14,361	Aug	148,553	6,307	154,860	6,766	87	Aug	1,977	2,452	4,429
	Jul	584	6,848	308	7,097	14,837	Jul	148,462	6,297	154,759	7,156	92	Jul	1,974	2,452	4,426
	Jun	611	7,981	349	7,304	16,245	Jun	148,241	6,239	154,480	8,330	108	Jun	1,986	2,479	4,465
	May	694	10,622	422	7,276	19,014	May	148,012	6,149	154,161	11,045	143	May	1,987	2,481	4,468
	Apr	523	7,483	322	7,295	15,623	Apr	147,774	6,148	153,923	7,805	102	Apr	1,987	2,462	4,449
	Mar	518	6,485	321	6,997	14,320	Mar	147,554	6,155	153,709	6,631	82	Mar	1,981	2,503	4,484
	Feb	297	4,403	271	6,928	11,898	Feb	147,299	5,952	153,251	4,674	61	Feb	1,980	2,496	4,476
	Jan	329	5,533	316	6,968	13,146	Jan	147,171	5,951	153,122	5,849	76	Jan	1,993	2,466	4,459
Total	6,127	84,992	3,965	86,234	181,307	AVG	147,744	6,185	154,339	7,412	1,153	Jul	1,982	2,455	4,437	
2017	Dec	227	5,605	535	5,753	11,580	Dec	147,054	5,943	152,997	6,551	86	Dec	1,978	2,421	4,399
	Nov	552	10,818	419	7,062	18,851	Nov	146,920	5,942	152,862	11,237	147	Nov	1,967	2,425	4,392
	Oct	599	7,120	331	7,097	15,147	Oct	146,889	5,928	152,817	6,222	82	Oct	1,960	2,425	4,385
	Sep	569	5,941	282	6,814	13,605	Sep	146,561	5,905	152,466	6,725	88	Sep	1,946	2,465	4,411
	Aug	520	6,414	311	6,793	13,514	Aug	146,409	5,892	152,301	7,466	98	Aug	1,947	2,455	4,402
	Jul	640	7,135	330	6,756	14,862	Jul	146,202	5,870	152,072	11,786	155	Jul	1,941	2,450	4,391
	Jun	684	9,578	373	6,672	17,307	Jun	146,002	5,862	151,872	8,203	108	Jun	1,934	2,453	4,387
	May	613	11,361	425	6,739	19,139	May	145,828	5,875	151,700	6,508	92	May	1,938	2,434	4,372
	Apr	581	8,459	345	6,625	15,409	Apr	145,699	5,892	151,599	4,864	64	Apr	1,928	2,438	4,366
	Mar	406	5,688	292	6,370	12,756	Mar	145,500	5,905	151,405	7,566	98	Mar	1,915	2,404	4,319
	Feb	310	4,110	242	6,128	10,790	Feb	145,319	5,928	151,241	6,600	80	Feb	1,906	2,405	4,311
	Jan	270	4,577	287	6,276	11,410	Jan	145,154	5,942	151,096	7,719	99	Jan	1,915	2,404	4,319
Total	6,127	86,839	3,950	80,937	177,313	AVG	144,495	5,907	152,402	7,566	1,191	Dec	1,906	2,405	4,311	
2016	Dec	227	5,605	535	5,753	11,580	Dec	144,336	5,928	151,264	6,600	80	Dec	1,892	2,402	4,294
	Nov	338	9,968	471	5,742	16,519	Nov	144,188	5,942	151,132	7,719	99	Nov	1,893	2,421	4,314
	Oct	303	7,312	407	5,735	13,757	Oct	144,044	5,935	151,000	6,722	86	Oct	1,877	2,396	4,273
	Sep	368	6,743	316	5,583	13,010	Sep	143,900	5,928	150,868	7,804	98	Sep	1,842	2,337	4,179
	Aug	367	6,996	320	5,630	13,246	Aug	143,756	5,916	150,672	9,804	131	Aug	1,806	2,315	4,121
	Jul	541	7,310	200	5,581	13,633	Jul	143,612	5,921	150,531	7,716	98	Jul	1,818	2,293	4,041
	Jun	469	8,494	210	5,451	14,625	Jun	143,468	5,905	150,363	6,200	80	Jun	1,806	2,315	4,121
	May	511	9,601	203	5,528	15,842	May	143,324	5,886	150,216	5,274	61	May	1,806	2,315	4,121
	Apr	470	8,439	182	5,447	14,139	Apr	143,180	5,875	150,065	6,723	80	Apr	1,806	2,315	4,121
	Mar	350	5,718	198	5,139	13,206	Mar	143,036	5,862	149,915	7,647	92	Mar	1,806	2,315	4,121
	Feb	238	5,030	170	5,116	10,554	Feb	142,892	5,849	149,763	6,300	76	Feb	1,806	2,315	4,121
	Jan	211	5,024	250	5,154	10,640	Jan	142,748	5,836	149,614	7,999	99	Jan	1,806	2,315	4,121
Total	4,394	88,501	3,373	65,883	162,151	AVG	142,054	5,836	149,614	7,999	99	Dec	1,806	2,315	4,121	
2015	Dec	236	6,995	258	5,117	12,076	Dec	141,900	5,823	149,465	6,799	92	Dec	1,806	2,315	4,121
	Nov	317	9,495	263	5,189	15,264	Nov	141,756	5,810	149,316	8,336	111	Nov	1,806	2,315	4,121
	Oct	373	7,440	207	5,220	13,241	Oct	141,612	5,797	149,167	9,155	127	Oct	1,806	2,315	4,121
	Sep	393	7,786	214	5,107	13,499	Sep	141,468	5,784	149,018	8,686	111	Sep	1,806	2,315	4,121
	Aug	346	6,036	237	5,129	11,749	Aug	141,324	5,771	148,869	7,100	92	Aug	1,806	2,315	4,121
	Jul	370														

Single Family

		13 Gal	13 Gal %	32 Gal	32 Gal %	90 Gal	90 Gal %	Total Signed Up	Total Signed Up %	Exempt	Exempt %
2020	Dec	35,308	23.32%	27,133	17.92%	89,677	59.22%	151,421	98.13%	3,339	2.16%
	Nov	35,178	23.25%	27,062	17.88%	89,781	59.33%	151,319	98.12%	3,357	2.18%
	Oct	35,065	23.18%	26,986	17.84%	89,900	59.44%	151,243	98.11%	3,375	2.19%
	Sep	35,033	23.18%	26,881	17.78%	89,943	59.51%	151,151	98.09%	3,401	2.21%
	Aug	35,009	23.18%	26,703	17.68%	90,032	59.61%	151,035	98.09%	3,423	2.22%
	Jul	35,022	23.20%	26,583	17.61%	90,060	59.66%	150,960	98.08%	3,443	2.24%
	Jun	35,108	23.28%	26,374	17.48%	90,064	59.71%	150,839	98.06%	3,466	2.25%
	May	35,287	23.41%	26,292	17.44%	89,887	59.63%	150,741	98.05%	3,494	2.27%
	Apr	35,514	23.58%	26,141	17.35%	89,700	59.55%	150,631	98.02%	3,519	2.29%
	Mar	35,525	23.60%	26,034	17.29%	89,716	59.59%	150,551	98.03%	3,544	2.31%
	Feb	35,334	23.50%	25,881	17.21%	89,895	59.78%	150,385	98.01%	3,567	2.32%
	Jan	35,207	23.43%	25,746	17.14%	90,013	59.91%	150,244	98.01%	3,581	2.34%
AVG	35,216	23.34%	26,485	17.55%	89,889	59.58%	150,877	98.07%	3,459	2.25%	
2019	Dec	35,049	23.34%	25,615	17.06%	90,254	60.10%	150,180	98.02%	3,590	2.34%
	Nov	34,915	23.27%	25,514	17.00%	90,355	60.22%	150,050	98.01%	3,603	2.35%
	Oct	34,822	23.22%	25,406	16.94%	90,471	60.33%	149,960	98.00%	3,618	2.36%
	Sep	34,720	23.17%	25,279	16.87%	90,594	60.46%	149,851	97.98%	3,644	2.38%
	Aug	34,696	23.17%	25,144	16.79%	90,664	60.54%	149,765	97.97%	3,662	2.40%
	Jul	34,691	23.19%	24,983	16.70%	90,656	60.60%	149,601	97.93%	3,706	2.43%
	Jun	34,681	23.19%	24,865	16.63%	90,719	60.67%	149,527	97.95%	3,743	2.45%
	May	34,687	23.22%	24,780	16.59%	90,668	60.69%	149,398	97.93%	3,772	2.47%
	Apr	34,738	23.28%	24,624	16.50%	90,569	60.70%	149,204	97.90%	3,808	2.50%
	Mar	34,665	23.25%	24,448	16.40%	90,720	60.84%	149,105	97.91%	3,850	2.53%
	Feb	34,612	23.23%	24,349	16.34%	90,776	60.92%	149,010	97.91%	3,860	2.54%
	Jan	34,507	23.17%	24,289	16.31%	90,825	61.00%	148,903	97.91%	3,867	2.54%
AVG	34,732	23.22%	24,941	16.68%	90,606	60.59%	149,546	97.95%	3,727	2.44%	
2018	Dec	34,421	23.13%	24,164	16.24%	90,976	61.12%	148,836	97.90%	3,681	2.55%
	Nov	34,325	23.08%	24,073	16.18%	91,068	61.22%	148,744	97.90%	3,698	2.57%
	Oct	34,263	23.04%	23,987	16.13%	91,196	61.32%	148,710	97.89%	3,925	2.58%
	Sep	34,181	22.99%	23,852	16.05%	91,362	61.46%	148,652	97.88%	3,938	2.59%
	Aug	34,106	22.96%	23,748	15.99%	91,435	61.55%	148,553	97.87%	3,965	2.61%
	Jul	34,084	22.96%	23,598	15.89%	91,520	61.65%	148,462	97.84%	3,999	2.64%
	Jun	34,079	22.99%	23,426	15.80%	91,571	61.77%	148,241	97.78%	4,037	2.66%
	May	34,137	23.06%	23,249	15.71%	91,420	61.77%	148,012	97.68%	4,075	2.69%
	Apr	34,160	23.13%	23,100	15.64%	91,226	61.76%	147,714	97.57%	4,108	2.71%
	Mar	34,167	23.17%	22,973	15.58%	91,393	61.98%	147,458	97.48%	4,163	2.75%
	Feb	34,091	23.14%	22,848	15.51%	91,444	62.08%	147,299	97.67%	4,191	2.78%
	Jan	33,953	23.07%	22,755	15.46%	91,548	62.21%	147,171	97.72%	4,211	2.80%
AVG	34,164	23.06%	23,481	15.85%	91,347	61.66%	148,154	97.77%	4,033	2.66%	
2017	Dec	33,798	22.98%	22,659	15.41%	91,730	62.38%	147,054	97.71%	4,230	2.81%
	Nov	33,672	22.92%	22,511	15.32%	91,852	62.52%	146,920	97.69%	4,251	2.83%
	Oct	33,559	22.86%	22,372	15.24%	91,943	62.63%	146,798	97.69%	4,271	2.84%
	Sep	33,420	22.78%	22,238	15.16%	92,163	62.83%	146,689	97.68%	4,301	2.86%
	Aug	33,346	22.75%	22,093	15.07%	92,229	62.93%	146,561	97.66%	4,328	2.88%
	Jul	33,297	22.74%	21,935	14.98%	92,274	63.02%	146,409	97.65%	4,355	2.90%
	Jun	33,248	22.74%	21,834	14.94%	92,214	63.08%	146,190	97.62%	4,399	2.94%
	May	33,274	22.79%	21,701	14.86%	92,106	63.09%	146,002	97.59%	4,446	2.97%
	Apr	33,270	22.81%	21,544	14.77%	92,082	63.14%	145,828	97.58%	4,477	3.00%
	AVG	33,432	22.82%	22,099	15.08%	92,066	62.85%	146,495	97.65%	4,340	2.89%

Multi Family

		Curb No Liner	Curb No Liner%	Curb Liner	Curb Liner%	Onsite Liner	Onsite Liner%	Total Signed Up	Total Signed Up %	Exempt	Exempt%
2020	Dec	1,410	21.85%	3,671	56.90%	1,501	23.26%	157,873	96.08%	88	1.31%
	Nov	1,411	21.91%	3,663	56.89%	1,494	23.20%	157,758	95.99%	91	1.36%
	Oct	1,410	21.93%	3,662	56.94%	1,487	23.12%	157,674	95.99%	89	1.33%
	Sep	1,412	21.97%	3,659	56.94%	1,484	23.09%	157,577	95.90%	90	1.34%
	Aug	1,401	21.86%	3,657	57.05%	1,481	23.10%	157,445	95.64%	90	1.34%
	Jul	1,408	21.96%	3,656	57.03%	1,472	22.96%	157,371	95.59%	90	1.34%
	Jun	1,416	22.06%	3,664	57.07%	1,465	22.82%	157,259	95.69%	89	1.33%
	May	1,413	22.05%	3,661	57.12%	1,462	22.81%	157,150	95.64%	89	1.33%
	Apr	1,383	21.70%	3,672	57.61%	1,445	22.67%	157,005	95.12%	89	1.33%
	Mar	1,409	22.06%	3,660	57.30%	1,441	22.56%	156,938	95.02%	88	1.31%
	Feb	1,413	22.17%	3,647	57.22%	1,435	22.51%	156,759	94.91%	88	1.31%
	Jan	1,413	22.17%	3,647	57.23%	1,434	22.50%	156,617	94.92%	88	1.31%
AVG	1,408	21.97%	3,660	57.11%	1,467	22.89%	157,286	95.54%	89	1.33%	
2019	Dec	1,436	22.47%	3,659	57.25%	1,420	22.22%	156,571	95.05%	84	1.25%
	Nov	1,439	22.52%	3,662	57.32%	1,414	22.13%	156,439	95.00%	85	1.26%
	Oct	1,441	22.57%	3,657	57.27%	1,413	22.13%	156,345	94.97%	85	1.26%
	Sep	1,440	22.62%	3,642	57.21%	1,408	22.12%	156,217	94.69%	83	1.23%
	Aug	1,437	22.64%	3,632	57.21%	1,401	22.07%	156,113	94.39%	83	1.23%
	Jul	1,442	22.82%	3,600	56.97%	1,398	22.12%	155,920	94.14%	85	1.27%
	Jun	1,496	23.51%	3,605	56.65%	1,384	21.75%	155,891	94.16%	78	1.15%
	May	1,507	23.71%	3,598	56.62%	1,374	21.62%	155,753	94.05%	76	1.12%
	Apr	1,513	23.97%	3,555	56.31%	1,367	21.65%	155,517	93.47%	75	1.11%
	Mar	1,558	24.59%	3,543	55.91%	1,359	21.45%	155,442	93.44%	68	1.00%
	Feb	1,557	24.59%	3,541	55.93%	1,353	21.37%	155,341	93.43%	68	1.00%
	Jan	1,557	24.60%	3,540	55.94%	1,352	21.37%	155,231	93.47%	69	1.02%
AVG	1,485	23.38%	3,603	56.72%	1,387	21.83%	155,898	94.19%	78	1.16%	
2018	Dec	1,570	24.78%	3,544	55.94%	1,344	21.22%	155,171	93.44%	67	0.99%
	Nov	1,569	24.81%	3,535	55.91%	1,342	21.22%	155,067	93.31%	68	1.00%
	Oct	1,576	24.91%	3,537	55.91%	1,332	21.06%	155,036	93.26%	66	0.97%
	Sep	1,570	24.85%	3,544	56.09%	1,324	20.96%	154,970	93.24%	65	0.96%
	Aug	1,568	24.86%	3,538	56.10%	1,321	20.94%	154,860	93.23%	65	0.96%
	Jul	1,571	24.95%	3,525	55.98%	1,319	20.95%	154,759	93.14%	65	0.96%
	Jun	1,634	26.19%	3,497	56.05%	1,307	20.95%	154,480	92.69%	58	0.86%
	May	1,627	26.46%	3,408	55.42%	1,303	21.19%	154,161	91.68%	58	0.86%
	Apr	1,614	26.68%	3,316	54.82%	1,300	21.49%	153,763	90.53%	58	0.87%
	Mar	1,918	32.14%	3,286	55.06%	1,286	21.55%	153,426	89.61%	35	0.53%
	Feb	1,976	33.20%	3,286	55.21%	1,276	21.44%	153,251	89.50%	32	0.48%
	Jan	1,978	33.24%	3,284	55.18%	1,275	21.42%	153,122	89.52%	31	0.47%
AVG	1,681	27.26%	3,442	55.64%	1,311	21.20%	154,339	91.93%	56	0.83%	
2017	Dec	1,994	33.55%	3,283	55.24%	1,266	21.30%	152,997	89.45%	31	0.47%
	Nov	1,993	33.54%	3,281	55.22%	1,265	21.29%	152,862	89.43%	30	0.45%
	Oct	1,992	33.56%	3,272	55.13%	1,263	21.28%	152,733	89.36%	30	0.45%
	Sep	1,996	33.67%	3,281	55.35%	1,243	20.97%	152,617	89.37%	29	0.44%
	Aug	1,995	33.78%	3,264	55.28%	1,236	20.93%	152,466	89.31%	29	0.44%
	Jul	2,001	33.96%	3,256	55.26%	1,230	20.88%	152,301	89.18%	29	0.44%
	Jun	2,002	34.01%	3,246	55.15%	1,229	20.88%	152,076	89.14%	29	0.44%
	May	1,998	34.04%	3,239	55.18%	1,221	20.80%	151,872	89.01%	29	0.44%
	Apr	1,999	34.10%	3,231	55.12%	1,219	20.79%	151,690	88.98%	29	0.44%
	AVG	1,997	33.80%	3,261	55.21%	1,241	21.01%	152,402	89.25%	29	0.44%