

# RECYCLING PROGRAMS

4th Quarter 2014

Seattle Public Utilities, Economic Services Section

Report Date: March 3, 2015

Phone: (206) 684-4143

## Tonnage Breakdown

### Single Family Tons (Without Contaminants)

Q4 2014:	14,456 Tons	1.4%	increase vs. same period in 2013
Cumulative Single Family:	56,065 Tons	1.9%	increase vs. same period in 2013

### Multi Family Tons (Without Contaminants)

Q4 2014:	5,917 Tons	9.6%	increase vs. same period in 2013
Cumulative Multi Family:	22,212 Tons	6.4%	increase vs. same period in 2013

### Total Residential Tons (Without Contaminants)

Q4 2014:	20,373 Tons	3.6%	increase vs. same period in 2013
Cumulative Residential:	78,277 Tons	3.1%	increase vs. same period in 2013

### Business Tons (Includes Contaminants)

Q4 2014:	850 Tons	1.1%	increase vs. same period in 2013
Cumulative Small Business:	3,294 Tons	9.7%	increase vs. same period in 2013

## Selected Statistics

Average Monthly Pounds Recyclables collected per Household YTD

Single Family:	63.6	(155,800 households)
Multi Family:	29.5	(138,093 households)

## Service Citywide:

Recycling service for single family households occurs every other week on the same day as garbage collection service. Beginning January 2005, for all materials except plastics, there is a recycling requirement which bans recyclables from being disposed of in garbage containers. Beginning January 2006, the recycling requirement is being enforced by not collecting garbage cans or dumpsters which contain more than 10% recyclables. Apartment managers are subject to a fine for repeated violation of the ban on recyclables in garbage dumpsters. Exemptions are granted when there is lack of space for recycle containers.

Apartment Buildings with 5 or more units are considered part of the Multi Family Recycling Program for purposes of tracking services. Apartment buildings can choose toter or dumpster style service.

The Business Recycling Program is available to businesses with a Seattle commercial garbage account and is limited to two recycling carts, collected every other week. The Business Recycling Program is free to qualifying businesses.

## Materials Citywide:

Newspaper, mixed paper, glass, aluminum, tin, plastic bottles, ferrous metals, plastic bags (grocery bags), plastic containers (dairy/yogurt containers), milk cartons and juice boxes. In addition, up to 2 gallons of used motor oil may be set out in separate 1 gallon containers each collection day. Electronics and appliances will be picked up curbside and recycled safely upon request for a fee. (\$20 per pickup of up to 3 electronic items, \$30 per appliance, \$38 per appliance containing CFC's)

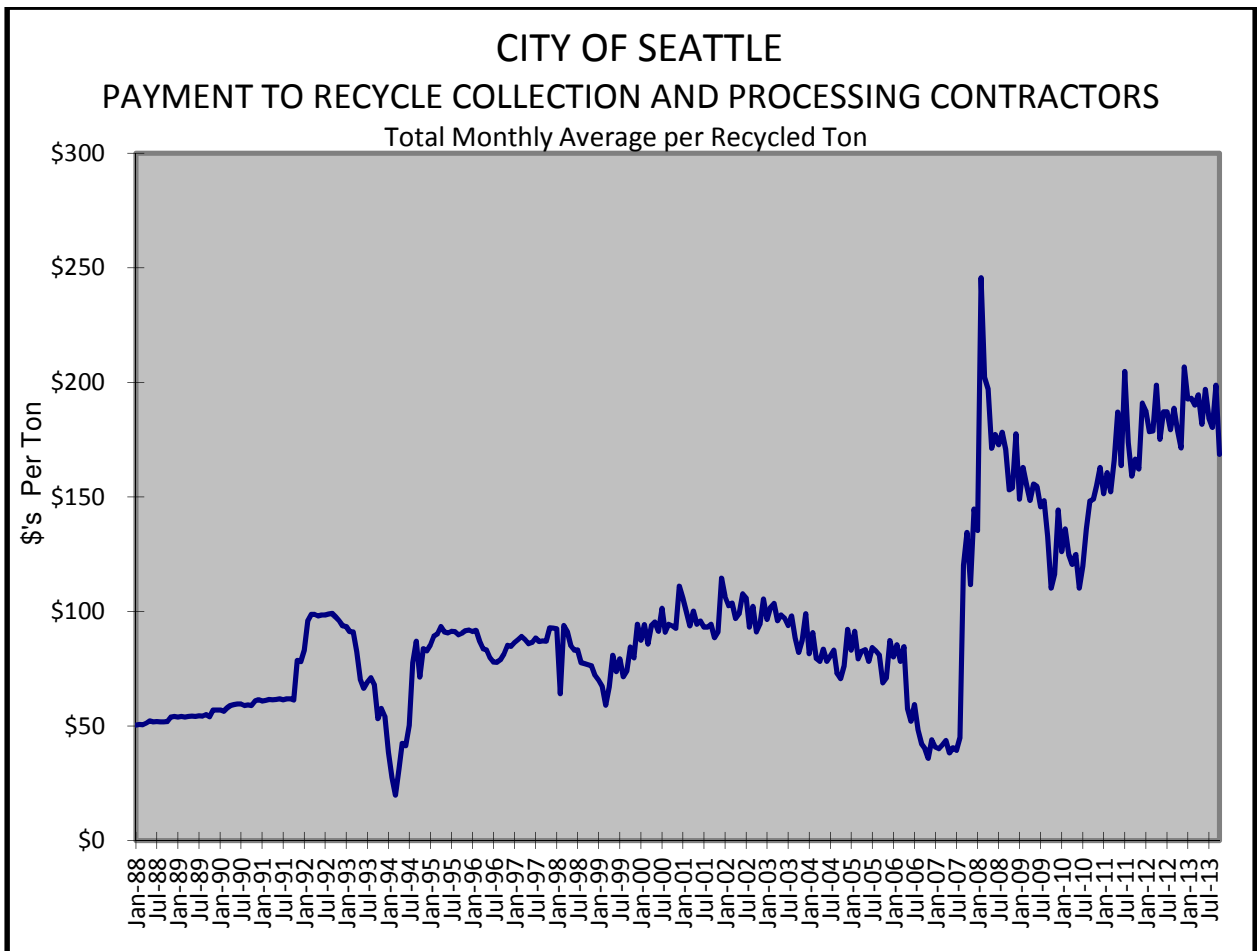
## Program Costs<sup>1</sup>

### Citywide Yearly Cumulative Average Cost/Ton

1988	\$ 48.55	1995	\$ 50.27	2002	\$ 96.46	2009	\$171.38
1989	\$ 51.33	1996	\$ 89.15	2003	\$100.62	2010	\$148.54
1990	\$ 54.20	1997	\$ 84.59	2004	\$ 95.82	2011	\$129.41
1991	\$ 58.28	1998	\$ 86.88	2005	\$ 81.72	2012	\$166.45
1992	\$ 61.41	1999	\$ 86.39	2006	\$ 81.44	2013	\$182.29
1993	\$ 93.25	2000 <sup>2</sup>	\$ 72.78	2007	\$ 64.83	2014	\$187.54
1994	\$ 77.38	2001	\$ 91.64	2008	\$ 54.28		

### **Avg. Cost for 4th Quarter 2014: \$181.55**

*(Payment to contractors falls when market prices for recyclable materials increase.)*



<sup>1</sup> Figures shown reflect the average amount SPU pays the recycling processing and collection contractors, which is a total contract price plus (or minus) a variable amount determined by market prices. In other words, the figures reflect the cost to the city of collection and sorting (including payment for disposal of contaminants). Revenue received for sale of the materials belongs to the processing contractor and as such these cost figures should not be construed as the total cost of recycling; figures also do not include costs such as liquidated damages, SPU program administration or public education.

<sup>2</sup> As of April 2000 recycling program costs include curbside (single family) apartment (multi-family) and small business programs. Prior to April 2000, the costs shown are only for the curbside program.

SINGLE FAMILY CAN TONS COLLECTED (Includes contaminants)					SINGLE FAMILY CAN CUSTOMER DATA							
Yr	Mo	Cleanscapes	Waste Management	Total SF Tons	Cumulative SF Tons	CS Curb Bldgs	WM Curb Bldgs	Total Curb Bldgs	CS Curb Households	WM Curb households	Total Curb Households	LBS PER HOUSEHOLD
2013	1	2,396.1	3,048.6	5,444.7	5,444.7	57,728	90,596	148,324	60,916	93,957	154,873	70.3
2013	2	1,841.4	2,373.3	4,214.7	9,659.4	57,733	90,608	148,341	60,871	93,966	154,837	54.4
2013	3	1,950.0	2,461.8	4,411.8	14,071.2	57,765	90,643	148,408	60,900	93,994	154,894	57.0
2013	4	2,087.6	2,681.3	4,769.0	18,840.1	57,825	90,679	148,504	60,951	94,026	154,977	61.5
2013	5	2,211.5	2,801.5	5,013.0	23,853.2	57,893	90,753	148,646	61,017	94,135	155,152	64.6
2013	6	1,985.9	2,533.0	4,518.9	28,372.0	57,923	90,818	148,741	61,048	94,164	155,212	58.2
2013	7	2,232.4	2,922.8	5,155.2	33,527.2	57,926	90,824	148,750	61,040	94,170	155,210	66.4
2013	8	2,127.3	2,726.0	4,853.3	38,380.5	57,956	90,825	148,781	61,076	94,158	155,234	62.5
2013	9	2,118.3	2,678.2	4,796.5	43,177.0	57,938	90,868	148,806	61,058	94,198	155,256	61.8
2013	10	2,249.4	2,815.6	5,065.1	48,242.1	57,936	90,861	148,797	61,057	94,194	155,251	65.3
2013	11	2,077.5	2,647.9	4,725.4	52,967.5	57,903	90,840	148,743	61,025	94,169	155,194	60.9
2013	12	2,329.8	2,980.8	5,310.6	58,278.2	57,905	90,859	148,764	61,024	94,185	155,209	68.4
2014	1	2,415.5	3,112.5	5,528.0	5,528.0	57,883	90,834	148,717	60,992	94,162	155,154	71.3
2014	2	1,885.2	2,445.9	4,331.1	9,859.1	57,887	90,851	148,738	60,995	94,178	155,173	55.8
2014	3	2,039.7	2,634.5	4,674.1	14,533.3	57,898	90,902	148,800	61,009	94,224	155,233	60.2
2014	4	2,094.8	2,741.2	4,836.0	19,369.2	57,961	90,978	148,939	61,080	94,292	155,372	62.3
2014	5	2,182.0	2,785.2	4,967.2	24,336.4	58,022	91,067	149,089	61,193	94,389	155,582	63.9
2014	6	2,105.9	2,731.3	4,837.2	29,173.6	58,059	91,126	149,185	61,220	94,447	155,667	62.1
2014	7	2,253.9	2,951.6	5,205.5	34,379.1	58,082	91,150	149,232	61,232	94,487	155,719	66.9
2014	8	2,033.3	2,662.6	4,695.9	39,075.0	58,094	91,181	149,275	61,221	94,522	155,743	60.3
2014	9	2,181.5	2,802.3	4,983.9	44,058.9	58,115	91,208	149,323	61,243	94,556	155,799	64.0
2014	10	2,228.8	2,867.1	5,095.9	49,154.8	58,075	91,192	149,267	61,190	94,531	155,721	65.4
2014	11	2,015.2	2,559.9	4,575.1	53,729.9	58,085	91,169	149,254	61,195	94,507	155,702	58.8
2014	12	2,469.6	3,166.9	5,636.5	59,366.4	58,095	91,214	149,309	61,195	94,605	155,800	72.4
TOTAL CITY SINGLE FAMILY TONNAGE BY MATERIAL DATA (Estimated from periodic composition studies)												
	ALUM	FERROUS METAL	GLASS	MIXED PAPER	NEWS PAPER	PLASTICS	TIN	CONTAMINANTS	TOTAL w/cont	TOTAL w/o cont	AVG LBS PER HOUSEHOLD	
2014 SF Total:	574.4	286.2	10,617.8	28,993.8	12,080.1	2,730.4	782.2	3,301.5	59,366.4	56,064.9	63.6	
2013 SF Total:	563.9	280.9	10,423.2	28,462.3	11,858.7	2,680.3	767.8	3,241.0	58,278.2	55,037.2	62.6	
2012 SF Total:	566.8	282.3	10,476.2	28,607.2	11,919.0	2,693.9	771.7	3,257.5	58,574.7	55,317.2	63.1	
2011 SF Total:	586.4	292.1	10,839.2	29,598.4	12,332.0	2,787.3	798.5	3,370.3	60,604.2	57,233.9	65.5	
2010 SF Total:	594.1	296.0	10,981.8	29,987.7	12,494.2	2,823.9	809.0	3,414.7	61,401.4	57,986.8	66.1	
2009 SF Total:	607.0	302.4	11,219.1	30,635.8	12,764.2	2,885.0	826.5	3,488.5	62,728.5	59,240.0	68.3	
2008 SF Total:	329.9	150.8	11,361.8	26,594.3	12,475.4	1,518.6	525.5	1,270.4	63,226.7	61,956.3	68.8	
2007 SF Total:	352.6	161.2	12,132.4	28,372.8	22,919.0	1,621.1	561.4	1,354.2	67,474.7	66,120.5	72.6	
2006 SF Total:	348.7	159.4	11,996.9	28,048.8	22,659.4	1,602.9	555.2	1,338.5	66,709.9	65,371.5	72.5	
2005 SF Total:	342.4	156.5	11,770.0	27,496.3	22,219.5	1,572.2	545.0	1,311.2	65,413.1	64,101.9	71.5	
2004 SF Total:	414.1	88.5	10,929.5	26,217.6	21,932.1	1,452.8	725.4	2,542.2	64,302.2	61,760.0	69.8	
2003 SF Total:	400.1	85.5	10,560.2	25,333.0	21,192.3	1,403.8	700.9	2,456.8	62,132.5	59,675.7	67.7	
2002 SF Total:	398.4	84.7	10,518.2	25,216.8	21,092.5	1,397.5	698.0	2,440.5	61,846.6	59,406.1	67.9	
2001 SF Total:	397.4	84.2	10,493.3	25,149.3	21,034.7	1,393.8	696.3	2,431.5	61,680.4	59,249.0	66.6	
2000 SF Total:	490.2	85.5	11,963.1	24,986.6	22,499.7	1,442.1	747.8	2,432.2	64,410.0	62,215.0	69.9	
1999 SF Total:	799.6	81.8	12,969.2	22,870.2	23,947.3	727.3	1,439.9	1,026.8	63,862.0	62,835.2	70.6	
1998 SF Total:	762.8	78.2	12,387.9	21,877.6	22,868.9	694.6	1,369.7	993.3	61,032.7	60,039.4	67.5	
1997 SF Total:	741.0	75.9	12,029.0	21,233.7	22,208.0	674.5	1,331.8	960.6	59,254.5	58,293.9	67.5	
1996 SF Total:	693.1	71.0	11,249.4	19,855.4	20,769.0	630.8	1,245.9	897.5	55,412.0	54,514.5	61.3	
1995 SF Total:	707.7	72.5	11,490.8	20,288.7	21,213.5	644.3	1,271.3	919.6	56,608.4	55,688.7	63.1	
1994 SF Total:	696.3	71.3	11,307.4	19,967.5	20,874.6	634.0	1,250.6	905.9	55,707.7	54,801.8	61.6	
1993 SF Total:	652.8	66.9	10,606.8	18,742.1	19,579.3	557.5	1,171.0	854.4	52,268.0	51,376.4	57.7	
1992 SF Total:	862.8	NA	10,702.0	17,610.6	17,412.9	288.8	1,409.9	1,259.6	49,546.6	48,287.0	54.2	
1991 SF Total:	684.6	NA	9,540.4	19,537.8	16,103.2	268.3	1,423.7	1,004.4	48,562.4	47,558.0	53.4	
1990 SF Total:	895.1	NA	9,096.9	17,201.8	17,373.0	163.1	1,306.8	685.9	46,722.6	46,036.7	51.3	
1989 SF Total:	433.2	NA	8,671.4	15,149.6	15,115.6	88.9	1,279.9	121.0	40,859.6	40,738.6	46.2	
1988 SF Total:	242.3	NA	4,833.6	7,739.7	10,481.4	0.0	649.2	39.4	23,985.6	23,946.2	31.9	
TOTAL CITY SINGLE FAMILY PERCENTAGE BREAKDOWN BY MATERIAL (Estimated from periodic composition studies) <sup>2</sup>												
	ALUM	FERROUS METAL	GLASS	MIXED PAPER	NEWS PAPER	PLASTICS	TIN	CONTAMINANTS	TOTAL			
2009-2014 Avg:	1.0%	0.5%	17.9%	48.8%	20.3%	4.6%	1.3%	5.6%	100%			
2005-2008 Avg:	0.5%	0.2%	18.0%	42.0%	34.0%	2.4%	0.8%	2.0%	100%			
2001-2004 Avg:	0.6%	0.1%	17.0%	40.8%	34.1%	2.3%	1.1%	3.9%	100%			
2000 Avg:	0.8%	0.1%	18.6%	38.8%	34.9%	2.2%	1.2%	3.8%	100%			
1993-1999 Avg:	1.2%	0.1%	20.3%	35.9%	37.5%	1.1%	2.2%	1.6%	100%			
1992 Avg:	1.7%	NA	21.6%	35.5%	35.1%	0.6%	2.8%	2.5%	100%			
1991 Avg:	1.4%	NA	19.6%	40.2%	33.2%	0.6%	2.9%	2.1%	100%			
1990 Avg:	1.9%	NA	19.5%	36.8%	37.2%	0.3%	2.8%	1.5%	100%			
1989 Avg:	1.1%	NA	21.2%	37.1%	37.0%	0.2%	3.1%	0.3%	100%			
1988 Avg:	1.0%	NA	20.2%	32.3%	43.7%	0.0%	2.7%	0.2%	100%			

<sup>1</sup> Single Family refers to customers that receive can garbage service. Tonnage data includes contaminants.

<sup>2</sup> Composition Studies can be found on the web at: <http://www.seattle.gov/util/Documents/Reports/SolidWasteReports/CompositionStudies/index.htm>

MULTI FAMILY TONS COLLECTED - CITY OF SEATTLE

MULTI FAMILY TONS COLLECTED (Includes contaminants)					MULTIFAMILY CUSTOMER DATA <sup>1</sup>										
Yr	Mo	Cleanscapes	Waste Management	Total Apt Tons	Cumulative Apt Tons	Waste Management		Total Apt Bldgs	CS Apt	Units	WM Apt Units	Total Apt Units	Units/Bldg	Lbs/ Bldg	Lbs/ Unit
						Cleanscapes Apt Bldgs	Apt Bldgs								
2013	1	1,166.6	846.5	2,013.0	2,013.0	3,209	2,297	5,506		84,905	41,934	126,839	23	731.2	31.7
2013	2	976.5	687.4	1,663.9	3,676.9	3,213	2,300	5,513		85,061	42,115	127,176	23	603.6	26.2
2013	3	1,019.5	721.8	1,741.3	5,418.2	3,216	2,299	5,515		85,246	42,131	127,377	23	631.5	27.3
2013	4	1,106.1	786.0	1,892.1	7,310.3	3,219	2,304	5,523		86,029	42,540	128,569	23	685.2	29.4
2013	5	1,111.1	776.0	1,887.1	9,197.4	3,220	2,309	5,529		86,108	42,654	128,762	23	682.6	29.3
2013	6	1,024.1	702.5	1,726.5	10,924.0	3,218	2,305	5,523		85,450	42,798	128,248	23	625.2	26.9
2013	7	1,140.4	802.3	1,942.7	12,866.7	3,225	2,307	5,532		85,965	42,817	128,782	23	702.4	30.2
2013	8	1,110.5	760.0	1,870.5	14,737.2	3,229	2,310	5,539		86,335	42,811	129,146	23	675.4	29.0
2013	9	1,130.8	780.5	1,911.3	16,648.5	3,234	2,314	5,548		86,651	43,063	129,714	23	689.0	29.5
2013	10	1,180.5	803.1	1,983.6	18,632.1	3,244	2,316	5,560		87,532	43,255	130,787	24	713.5	30.3
2013	11	1,074.7	769.5	1,844.2	20,476.3	3,247	2,321	5,568		87,644	43,453	131,097	24	662.4	28.1
2013	12	1,165.9	811.9	1,977.9	22,454.2	3,253	2,335	5,588		87,838	43,529	131,367	24	707.9	30.1
2014	1	1,209.7	851.0	2,060.7	2,060.7	3,260	2,338	5,598		88,472	43,895	132,367	24	736.2	31.1
2014	2	1,052.3	735.6	1,787.9	3,848.6	3,258	2,340	5,598		88,325	43,910	132,235	24	638.8	27.0
2014	3	1,131.8	812.2	1,944.1	5,792.7	3,262	2,341	5,603		88,553	44,019	132,572	24	693.9	29.3
2014	4	1,145.5	784.0	1,929.5	7,722.2	3,267	2,347	5,614		89,214	44,467	133,681	24	687.4	28.9
2014	5	1,138.3	806.7	1,945.0	9,667.2	3,277	2,348	5,625		89,661	44,479	134,140	24	691.6	29.0
2014	6	1,141.4	736.6	1,878.0	11,545.2	3,281	2,353	5,634		90,015	44,589	134,604	24	666.7	27.9
2014	7	1,219.8	823.6	2,043.4	13,588.6	3,284	2,352	5,636		90,102	44,575	134,677	24	725.1	30.3
2014	8	1,136.2	762.9	1,899.2	15,487.8	3,294	2,353	5,647		90,587	44,628	135,215	24	672.6	28.1
2014	9	1,217.7	813.3	2,031.0	17,518.8	3,300	2,356	5,656		91,161	45,081	136,242	24	718.2	29.8
2014	10	1,275.8	869.6	2,145.4	19,664.2	3,308	2,360	5,668		92,366	45,082	137,448	24	757.0	31.2
2014	11	1,150.3	788.6	1,938.9	21,603.1	3,311	2,362	5,673		92,584	45,098	137,682	24	683.6	28.2
2014	12	1,331.3	945.9	2,277.2	23,880.3	3,311	2,364	5,675		92,962	45,131	138,093	24	802.5	33.0
TOTAL MULTIFAMILY PERCENTAGE BREAKDOWN BY MATERIAL (Estimated from periodic composition studies)															
	ALUM	FERROUS METAL	GLASS	MIXED PAPER	NEWSPAPER	PLASTICS	TIN	CONTAMINANTS	TOTAL w/cont	TOTAL w/o cont	Avg	Lbs/Bldg	Avg Lbs/Unit		
2014 MF Total:	177.1	67.6	4,081.9	12,742.0	4,065.7	854.7	223.2	1,668.1	23,880.3	22,212.2		706.1	29.5		
2013 MF Total:	166.5	63.6	3,838.2	11,981.1	3,822.8	803.7	209.8	1,568.5	22,454.2	20,885.7		675.8	29.0		
2012 MF Total:	164.2	62.7	3,785.4	11,816.4	3,770.3	792.6	206.9	1,546.9	22,145.6	20,598.7		679.5	29.7		
2011 MF Total:	147.8	56.5	3,407.9	10,637.9	3,394.3	713.6	186.3	1,392.6	19,936.8	18,544.2		626.7	27.2		
2010 MF Total:	152.5	58.2	3,515.5	10,973.9	3,501.5	736.1	192.2	1,436.6	20,566.6	19,130.0		668.8	29.6		
2009 MF Total:	143.8	54.9	3,315.7	10,350.2	3,302.5	694.3	181.3	1,355.0	19,397.8	18,042.8		621.9	28.1		
2008 MF Total:	90.4	106.2	3,854.6	9,275.5	6,014.2	441.0	150.3	927.8	20,461.9	21,951.6		626.9	28.7		
2007 MF Total:	93.0	109.4	3,964.5	9,539.0	6,186.5	453.6	154.6	544.9	21,045.5	20,500.6		647.0	30.2		
2006 MF Total:	87.1	104.2	3,705.6	8,902.9	5,790.8	424.1	144.6	509.2	19,668.4	19,159.2		605.8	28.8		
2005 MF Total:	79.8	94.5	3,400.4	8,177.0	5,309.0	389.1	132.6	467.3	18,049.7	17,582.4		582.3	27.6		
2004 MF Total:	82.3	30.7	2,690.8	6,638.0	5,556.4	259.6	128.3	464.2	15,850.3	15,386.0		554.1	26.3		
2003 MF Total:	76.8	28.6	2,509.7	6,190.4	5,180.8	242.0	119.6	432.9	14,780.8	14,347.9		532.6	25.6		
2002 MF Total:	71.5	26.6	2,331.1	5,754.6	4,822.7	225.3	111.4	402.5	13,745.6	13,343.1		509.3	24.5		
2001 MF Total:	70.0	26.0	2,282.6	5,636.3	4,725.9	220.7	109.2	394.2	13,465.0	13,070.8		550.7	25.9		
2000 MF Total:	65.0	17.8	2,050.6	5,269.2	4,004.9	179.9	103.5	292.2	11,983.2	11,691.0		497.0	25.0		
1999 MF Total:	68.6	NA	1,908.6	5,647.9	2,763.6	87.3	66.4	111.9	10,654.3	10,542.4		654.7	27.6		
1998 MF Total:	70.2	NA	1,835.2	5,020.4	2,978.4	99.6	106.1	129.0	10,238.8	10,109.8		669.2	28.1		
1997 MF Total:	68.9	NA	1,646.4	4,686.3	2,521.9	87.3	114.5	89.5	9,214.8	9,125.3		639.2	26.8		
1996 MF Total:	69.9	NA	1,527.3	3,296.6	3,041.2	78.7	113.3	61.8	8,188.7	8,126.9		613.5	24.8		
1995 MF Total:	49.6	NA	1,458.3	2,555.7	2,995.5	13.5	120.0	NA	7,192.4	7,192.4		608.2	22.9		
1994 MF Total:	51.3	NA	1,224.6	3,013.2	1,678.1	0.8	111.0	NA	6,079.0	6,079.0		657.8	23.6		
1993 MF Total:	47.0	NA	769.5	2,517.4	435.6	0.3	85.9	NA	3,855.7	3,855.7		646.0	20.2		
1992 MF Total:	3.3	NA	736.2	1,438.5	726.7	NA	68.7	NA	2,973.4	2,973.4		753.3	24.4		
1991 MF Total:	0.9	NA	410.6	661.7	732.7	NA	23.6	NA	1,829.5	1,829.5		733.5	23.4		
1990 MF Total:	NA	NA	228.7	500.8	358.4	NA	6.3	NA	1,094.2	1,094.2		712.1	22.8		
1989 MF Total:	NA	NA	69.9	42.7	192.8	NA	NA	NA	305.4	305.4		NA	NA		
MULTI FAMILY PERCENTAGE BREAKDOWN BY MATERIAL <sup>2</sup>															
	ALUM	FERROUS METAL	GLASS	MIXED PAPER	NEWS PAPER	PLASTIC	TIN	CONTAMINANTS	TOTAL						
2009-2014 Avg:	0.7%	0.3%	17.1%	53.4%	17.0%	3.6%	0.9%	7.0%	100%						
2005-2008 Avg:	0.4%	0.5%	18.8%	45.3%	29.4%	2.2%	0.7%	2.6%	100%						
2001-2004 Avg:	0.5%	0.2%	17.0%	41.9%	35.1%	1.6%	0.8%	2.9%	100%						
2000 Avg:	0.5%	0.1%	17.1%	44.0%	33.4%	1.5%	0.9%	2.4%	100%						
1999 Avg:	0.6%	NA	17.9%	53.0%	25.9%	0.8%	0.6%	1.1%	100%						
1998 Avg:	0.7%	NA	17.9%	49.0%	29.1%	1.0%	1.0%	1.3%	100%						
1997 Avg:	0.7%	NA	17.9%	50.9%	27.4%	0.9%	1.2%	1.0%	100%						
1996 Avg:	0.9%	NA	18.7%	40.3%	37.1%	1.0%	1.4%	0.8%	100%						
1995 Avg:	0.7%	NA	20.3%	35.5%	41.6%	0.2%	1.7%	NA	100%						
1994 Avg:	0.8%	NA	20.1%	49.6%	27.6%	0.0%	1.8%	NA	100%						
1993 Avg:	1.2%	NA	20.0%	65.3%	11.3%	0.0%	2.2%	NA	100%						
1992 Avg:	NA	NA	24.8%	48.4%	24.4%	NA	2.3%	NA	100%						
1991 Avg:	NA	NA	22.4%	36.2%	40.0%	NA	1.3%	NA	100%						
1990 Avg:	NA	NA	20.9%	45.8%	32.8%	NA	0.6%	NA	100%						
1989 Avg:	NA	NA	22.3%	19.0%	55.1%	NA	U.0%	NA	100%						

<sup>1</sup> Multi Family refers to customers that receive dumpster garbage service. Tonnage data includes contaminants.

<sup>2</sup> Composition Studies can be found on the web at: <http://www.seattle.gov/util/Documents/Reports/SolidWasteReports/CompositionStudies/index.htm>

TOTAL CITY RESIDENTIAL RECYCLING TONS COLLECTED (Includes contaminants)							COMMERCIAL BUSINESS RECYCLE PROGRAM	SPECIAL ITEMS						
Yr	Mo	Cleanscapes	Waste Management	Total Tons	Cumulative Tons	MOTOR OIL (Gallons)		ELECTRONICS (units)	APPLIANCES (units)					
2013	1	3,562.6	3,895.1	7,457.7	7,457.7	259.4	170	3	15					
2013	2	2,817.9	3,060.7	5,878.6	13,336.3	220.8	180	8	18					
2013	3	2,969.5	3,183.6	6,153.1	19,489.4	231.2	200	10	27					
2013	4	3,193.8	3,467.3	6,661.1	26,150.5	235.0	184	13	22					
2013	5	3,322.6	3,577.5	6,900.1	33,050.6	243.8	247	7	17					
2013	6	3,009.9	3,235.5	6,245.4	39,296.0	219.3	247	9	16					
2013	7	3,372.8	3,725.2	7,097.9	46,393.9	240.2	215	5	21					
2013	8	3,237.8	3,486.0	6,723.8	53,117.7	240.7	269	12	14					
2013	9	3,249.1	3,458.7	6,707.8	59,825.5	271.2	218	5	20					
2013	10	3,429.9	3,618.7	7,048.7	66,874.2	287.5	244	16	23					
2013	11	3,152.3	3,417.4	6,569.6	73,443.8	283.8	150	4	20					
2013	12	3,495.8	3,792.7	7,288.5	80,732.3	269.7	121	6	9					
2014	1	3,625.2	3,963.5	7,588.7	7,588.7	300.8	123	4	14					
2014	2	2,937.5	3,181.5	6,119.0	13,707.7	249.0	115	4	21					
2014	3	3,171.5	3,446.7	6,618.2	20,326.0	284.4	242	8	35					
2014	4	3,240.3	3,525.1	6,765.5	27,091.4	263.9	225	10	27					
2014	5	3,320.3	3,591.9	6,912.2	34,003.7	255.6	168	4	14					
2014	6	3,247.3	3,467.9	6,715.2	40,718.8	259.7	191	5	28					
2014	7	3,473.7	3,775.2	7,248.9	47,967.8	273.5	155	4	17					
2014	8	3,169.6	3,425.5	6,595.1	54,562.8	271.4	169	2	31					
2014	9	3,399.2	3,615.7	7,014.9	61,577.7	285.3	141	1	15					
2014	10	3,504.6	3,736.7	7,241.3	68,819.0	288.5	142	2	18					
2014	11	3,165.6	3,348.5	6,514.0	75,333.0	264.3	80	3	14					
2014	12	3,801.0	4,112.7	7,913.7	83,246.7	297.3	70	2	22					
TOTAL CITY PERCENTAGE BREAKDOWN BY MATERIAL (Estimated from periodic composition studies)														
	ALUM	FERROUS METAL	GLASS	MIXED PAPER	NEWS PAPER	PLASTICS	TIN	CONTAM- INANTS	TOTAL w/cont	TOTAL w/o cont	COMMERCIAL BUSINESS RECYCLE	MOTOR OIL (Gallons)	ELECTRONICS (units)	APPLIANCES (units)
2014 Total:	751.5	353.8	14,699.8	41,735.9	16,145.8	3,585.1	1,005.3	4,969.6	83,246.7	78,277.1	3,293.7	1,821	49	256
2013 Total:	730.4	344.5	14,261.4	40,443.4	15,681.5	3,484.0	977.7	4,809.5	80,732.3	75,922.9	3,002.5	2,445	98	222
2012 Total:	731.0	345.1	14,261.7	40,423.6	15,689.3	3,486.6	978.7	4,804.4	80,720.3	75,915.9	2,874.4	14,021	352	1,133
2011 Total:	734.3	348.6	14,247.1	40,236.2	15,726.3	3,500.8	984.8	4,763.0	80,541.0	75,778.1	2,689.7	3,035	151	325
2010 Total:	746.7	354.2	14,497.3	40,961.6	15,995.7	3,560.1	1,001.2	4,851.3	81,968.0	77,116.7	2,896.5	3,105	147	483
2009 Total:	750.8	357.3	14,534.9	40,986.1	16,066.7	3,579.2	1,007.7	4,843.5	82,126.2	77,282.8	3,947.9	1,132	156	417
2008 Total:	420.3	257.1	15,216.3	35,869.8	27,489.6	1,959.6	675.8	1,800.2	83,688.6	83,907.9				
2007 Total:	445.6	270.7	16,097.0	37,911.7	29,105.5	2,074.7	716.0	1,899.1	88,520.3	86,621.1				
2006 Total:	435.8	263.7	15,702.5	36,951.7	28,450.2	2,027.0	699.8	1,847.6	86,378.3	84,530.7				
2005 Total:	422.2	251.1	15,170.3	35,673.3	27,528.5	1,961.3	677.6	1,778.5	83,462.8	81,684.3				
2004 Total:	496.4	119.2	13,620.3	32,855.6	27,488.5	1,712.4	853.7	3,006.4	80,152.4	77,146.0				
2003 Total:	476.8	114.2	13,069.8	31,523.3	26,373.1	1,645.9	820.5	2,889.7	76,913.3	74,023.7				
2002 Total:	469.9	111.2	12,849.3	30,971.4	25,915.2	1,622.7	809.4	2,843.0	75,592.1	72,749.2				
2001 Total:	467.5	110.2	12,775.9	30,785.6	25,760.6	1,614.5	805.5	2,825.7	75,145.4	72,319.7				
2000 Total:	555.2	103.3	14,013.8	30,255.8	26,504.6	1,622.0	851.3	2,724.4	76,393.1	73,906.0				
1999 Total:	868.2	78.2	14,877.8	28,518.0	26,710.9	814.5	1,506.3	1,138.7	74,516.3	73,377.6				
1998 Total:	833.0	75.9	14,223.1	26,898.0	25,847.3	794.2	1,475.8	1,122.3	71,271.5	70,149.2				
1997 Total:	809.9	71.0	13,675.5	25,920.0	24,729.9	761.8	1,446.3	1,050.1	68,469.3	67,419.2				
1996 Total:	763.0	72.5	12,776.7	23,152.0	23,810.2	709.5	1,359.1	959.3	63,600.7	62,641.4				
1995 Total:	757.3	71.3	12,949.0	22,844.4	24,208.9	657.8	1,391.3	919.6	63,800.8	62,881.2				
1994 Total:	747.6	66.9	12,532.0	22,980.7	22,552.7	634.9	1,361.5	905.9	61,786.7	60,880.8				
1993 Total:	699.8	NA	11,376.3	21,259.5	20,014.8	557.8	1,257.0	854.4	56,123.7	55,232.1				
1992 Total:	866.1	NA	11,438.2	19,049.1	18,139.6	288.8	1,478.6	1,259.6	52,520.0	51,260.4				
1991 Total:	685.5	NA	9,951.0	20,199.5	16,835.9	268.3	1,447.3	1,004.4	50,392.0	49,387.5				
1990 Total:	895.1	NA	9,325.6	17,702.6	17,731.4	163.1	1,313.1	685.9	47,816.8	47,130.9				
1989 Total:	433.2	NA	8,741.3	15,192.3	15,308.4	88.9	1,279.9	121.0	41,165.0	41,044.0				
1988 Total:	242.3	NA	4,833.6	7,739.7	10,481.4	NA	649.2	39.4	23,985.6	23,946.2				

July 25-Aug 2, 2012: Waste Management work stoppage due to strike.

March 30, 2009: New contracts began. Cleanscapes and Waste Management are contracted haulers.

Business Recycling tons included in residential tons prior to 2009.

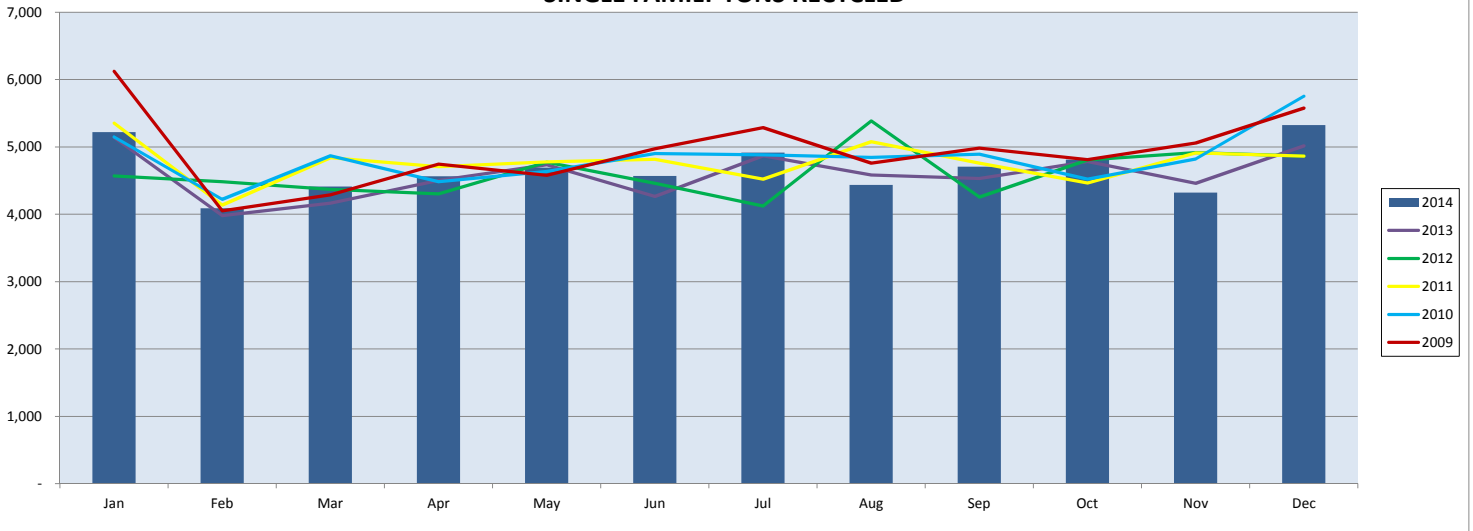
Jan 2005: Ban on recycle in garbage (except plastics) began

April 2000 New contract begins. Allied Waste and Waste Management are contracted haulers

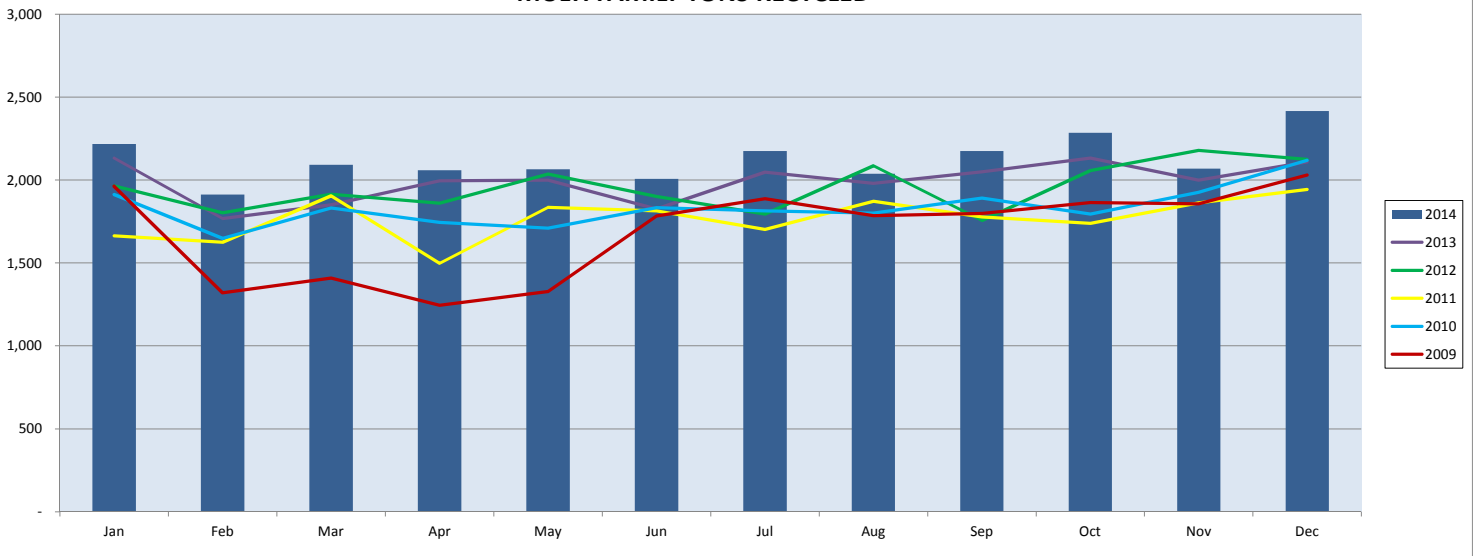
New materials (polycoated paper, aseptic packaging and additional plastics) added to program

Jan 2000: New Billing system (Banner/CCSS)

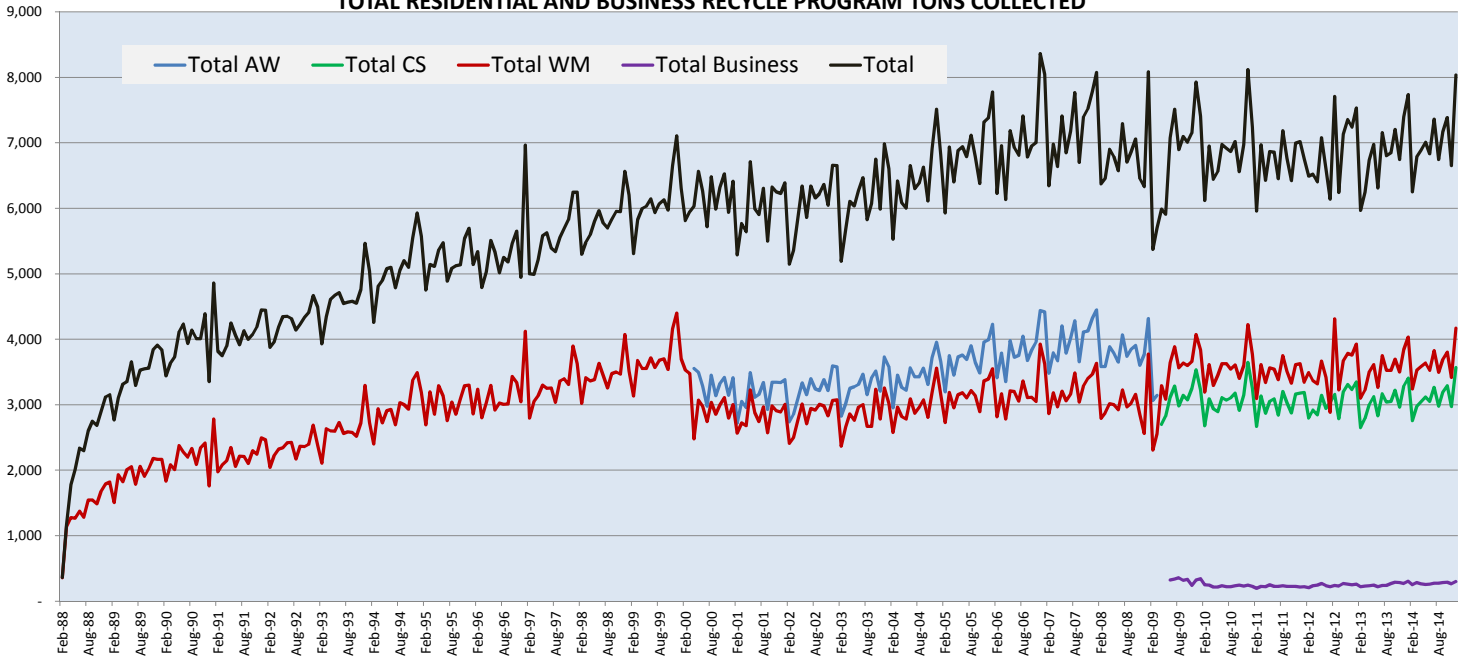
### CITY OF SEATTLE SINGLE FAMILY TONS RECYCLED



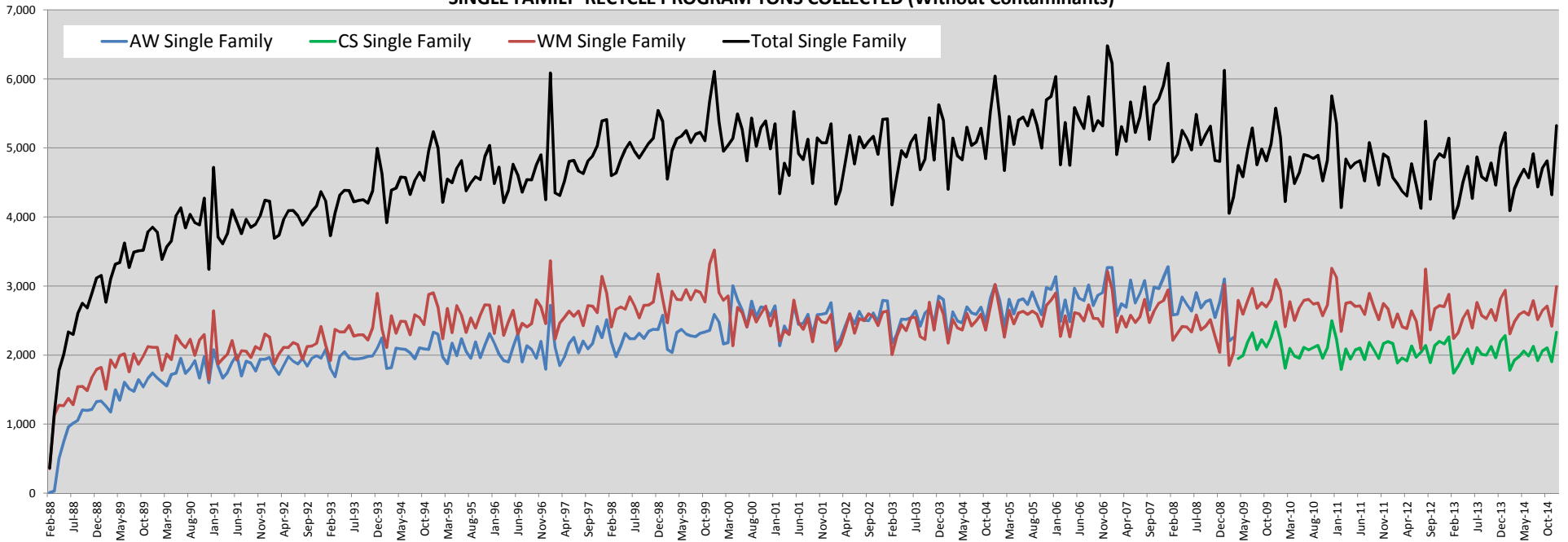
### CITY OF SEATTLE MULTI FAMILY TONS RECYCLED



### CITY OF SEATTLE TOTAL RESIDENTIAL AND BUSINESS RECYCLE PROGRAM TONS COLLECTED



**CITY OF SEATTLE  
SINGLE FAMILY RECYCLE PROGRAM TONS COLLECTED (Without Contaminants)**



**CITY OF SEATTLE  
MULTI FAMILY RECYCLE PROGRAM TONS COLLECTED (Without Contaminants)**

