

RECYCLING PROGRAMS

4th Quarter 2013

Seattle Public Utilities, Economic Services Section

Report Date: February 3, 2014

Phone: (206) 684-4143

Tonnage Breakdown

Single Family Tons (Without Contaminants)

Q4 2013:	14,261 Tons	2.3%	decrease vs. same period in 2012
Cumulative Single Family:	55,023 Tons	0.5%	decrease vs. same period in 2012

Multi Family Tons (Without Contaminants)

Q4 2013:	5,400 Tons	3.3%	decrease vs. same period in 2012
Cumulative Multi Family:	20,886 Tons	1.4%	increase vs. same period in 2012

Total Residential Tons (Without Contaminants)

Q4 2013:	19,661 Tons	2.6%	decrease vs. same period in 2012
Cumulative Residential:	75,909 Tons	0.1%	decrease vs. same period in 2012

Business Tons (Includes Contaminants)

Q4 2013:	841 Tons	8.6%	increase vs. same period in 2012
Cumulative Small Business:	3,003 Tons	4.5%	increase vs. same period in 2012

Selected Statistics

Average Monthly Pounds Recyclables collected per Household YTD

Single Family:	62.6	(155,209 households)
Multi Family:	29.0	(131,367 households)

Service Citywide:

Recycling service for single family households occurs every other week on the same day as garbage collection service. Beginning January 2005, for all materials except plastics, there is a recycling requirement which bans recyclables from being disposed of in garbage containers. Beginning January 2006, the recycling requirement is being enforced by not collecting garbage cans or dumpsters which contain more than 10% recyclables. Apartment managers are subject to a fine for repeated violation of the ban on recyclables in garbage dumpsters. Exemptions are granted when there is lack of space for recycle containers.

Apartment Buildings with 5 or more units are considered part of the Multi Family Recycling Program for purposes of tracking services. Apartment buildings can choose toter or dumpster style service.

The Business Recycling Program is available to businesses with a Seattle commercial garbage account and is limited to two recycling carts, collected every other week. The Business Recycling Program is free to qualifying businesses.

Materials Citywide:

Newspaper, mixed paper, glass, aluminum, tin, plastic bottles, ferrous metals, plastic bags (grocery bags), plastic containers (dairy/yogurt containers), milk cartons and juice boxes. In addition, up to 2 gallons of used motor oil may be set out in separate 1 gallon containers each collection day. Electronics and appliances will be picked up curbside and recycled safely upon request for a fee. (\$20 per pickup of up to 3 electronic items, \$30 per appliance, \$38 per appliance containing CFC's)

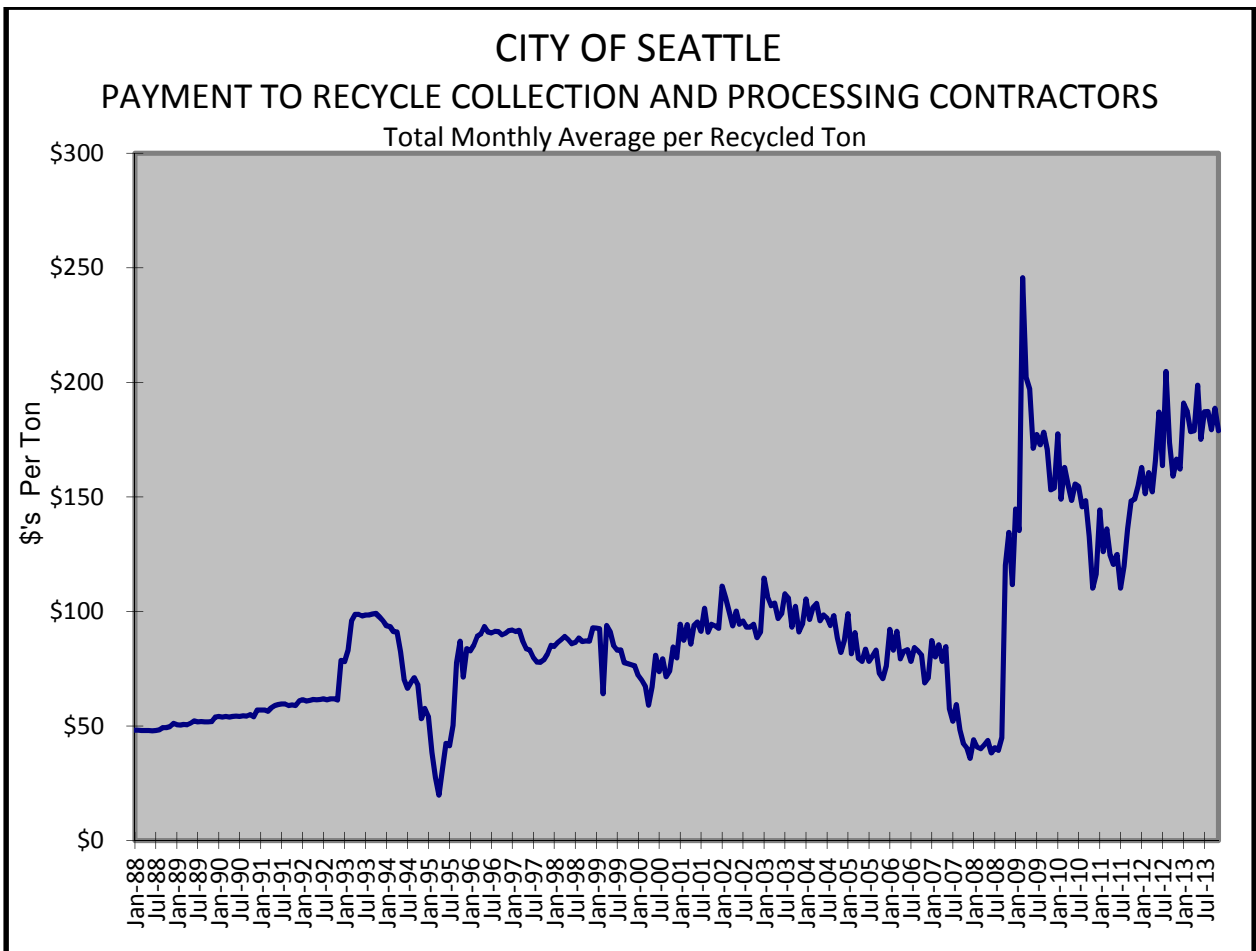
Program Costs¹

Citywide Yearly Cumulative Average Cost/Ton

1988	\$ 48.55	1995	\$ 50.27	2002	\$ 96.46	2009	\$171.38
1989	\$ 51.33	1996	\$ 89.15	2003	\$100.62	2010	\$148.54
1990	\$ 54.20	1997	\$ 84.59	2004	\$ 95.82	2011	\$129.41
1991	\$ 58.28	1998	\$ 86.88	2005	\$ 81.72	2012	\$166.45
1992	\$ 61.41	1999	\$ 86.39	2006	\$ 81.44	2013	\$182.29
1993	\$ 93.25	2000 ²	\$ 72.78	2007	\$ 64.83		
1994	\$ 77.38	2001	\$ 91.64	2008	\$ 54.28		

Avg. Cost for 4th Quarter 2013: \$182.12

(Payment to contractors falls when market prices for recyclable materials increase.)



¹ Figures shown reflect the average amount SPU pays the recycling processing and collection contractors, which is a total contract price plus (or minus) a variable amount determined by market prices. In other words, the figures reflect the cost to the city of collection and sorting (including payment for disposal of contaminants). Revenue received for sale of the materials belongs to the processing contractor and as such these cost figures should not be construed as the total cost of recycling; figures also do not include costs such as liquidated damages, SPU program administration or public education.

² As of April 2000 recycling program costs include curbside (single family) apartment (multi-family) and small business programs. Prior to April 2000, the costs shown are only for the curbside program.

SINGLE FAMILY CAN TONS COLLECTED (includes contaminants)						SINGLE FAMILY CAN CUSTOMER DATA						
Yr	Mo	Cleanscapes	Waste Management	Total SF Tons	Cumulative SF Tons	CS Curb Bldgs	WM Curb Bldgs	Total Curb Bldgs	CS Curb Households	WM Curb households	Total Curb Households	LBS PER HOUSEHOLD
2012	1	2,295.4	2,544.0	4,839.4	4,839.4	57,556	90,266	147,822	60,870	93,554	154,424	62.7
2012	2	1,998.3	2,747.9	4,746.2	9,585.6	57,625	90,331	147,956	60,728	93,629	154,357	61.5
2012	3	2,073.8	2,553.8	4,627.6	14,213.2	57,649	90,355	148,004	60,796	93,653	154,449	59.9
2012	4	2,030.5	2,525.2	4,555.7	18,768.9	57,697	90,436	148,133	60,847	93,737	154,584	58.9
2012	5	2,256.2	2,798.2	5,054.4	23,823.3	57,764	90,525	148,289	60,934	93,858	154,792	65.3
2012	6	2,082.7	2,640.7	4,723.4	28,546.6	57,815	90,575	148,390	60,972	93,878	154,850	61.0
2012	7	2,158.7	2,208.2	4,366.9	32,913.5	57,838	90,612	148,450	60,989	93,927	154,916	56.4
2012	8	2,266.2	3,437.8	5,704.0	38,617.5	57,856	90,676	148,532	61,011	94,010	155,021	73.6
2012	9	2,001.8	2,505.0	4,506.8	43,124.3	57,852	90,691	148,543	61,004	94,026	155,030	58.1
2012	10	2,264.1	2,828.3	5,092.5	48,216.8	57,833	90,664	148,497	60,992	94,003	154,995	65.7
2012	11	2,329.5	2,876.1	5,205.6	53,422.4	57,789	90,645	148,434	60,950	93,997	154,947	67.2
2012	12	2,290.0	2,862.3	5,152.2	58,574.7	57,759	90,625	148,384	60,913	93,977	154,890	66.5
2013	1	2,396.1	3,048.6	5,444.7	5,444.7	57,728	90,596	148,324	60,916	93,957	154,873	70.3
2013	2	1,841.4	2,373.3	4,214.7	9,659.4	57,733	90,608	148,341	60,871	93,966	154,837	54.4
2013	3	1,950.0	2,461.8	4,411.8	14,071.2	57,765	90,643	148,408	60,900	93,994	154,894	57.0
2013	4	2,087.6	2,681.3	4,769.0	18,840.1	57,825	90,679	148,504	60,951	94,026	154,977	61.5
2013	5	2,211.5	2,792.3	5,003.8	23,843.9	57,893	90,753	148,646	61,017	94,135	155,152	64.5
2013	6	1,985.9	2,533.0	4,518.9	28,362.8	57,923	90,818	148,741	61,048	94,164	155,212	58.2
2013	7	2,232.4	2,922.8	5,155.2	33,518.0	57,926	90,824	148,750	61,040	94,170	155,210	66.4
2013	8	2,127.3	2,726.0	4,853.3	38,371.3	57,956	90,825	148,781	61,076	94,158	155,234	62.5
2013	9	2,118.3	2,672.4	4,790.7	43,162.0	57,938	90,868	148,806	61,058	94,198	155,256	61.7
2013	10	2,249.4	2,815.6	5,065.1	48,227.1	57,936	90,861	148,797	61,057	94,194	155,251	65.3
2013	11	2,077.5	2,647.9	4,725.4	52,952.5	57,903	90,840	148,743	61,025	94,169	155,194	60.9
2013	12	2,329.8	2,980.8	5,310.6	58,263.1	57,905	90,859	148,764	61,024	94,185	155,209	68.4
TOTAL CITY SINGLE FAMILY TONNAGE BY MATERIAL DATA (Estimated from periodic composition studies)												
	FERROUS					CONTAMINANTS		TOTAL	AVG LBS PER HOUSEHOLD			
	ALUM	METAL	GLASS MIXED PAPER	NEWS PAPER	PLASTICS	TIN	TOTAL w/cont	w/o cont				
2013 SF Total:	563.8	280.8	10,420.5	28,455.0	11,855.6	2,679.6	767.6	3,240.1	58,263.1	55,023.0	62.6	
2012 SF Total:	566.8	282.3	10,476.2	28,607.2	11,919.0	2,693.9	771.7	3,257.5	58,574.7	55,317.2	63.1	
2011 SF Total:	586.4	292.1	10,839.2	29,598.4	12,332.0	2,787.3	798.5	3,370.3	60,604.2	57,233.9	65.5	
2010 SF Total:	590.0	293.9	10,904.5	29,776.6	12,406.3	2,804.1	803.3	3,390.6	60,969.2	57,578.6	66.1	
2009 SF Total:	607.0	302.4	11,219.1	30,635.8	12,764.2	2,885.0	826.5	3,488.5	62,728.5	59,240.0	68.3	
2008 SF Total:	329.9	150.8	11,361.8	26,594.3	21,475.4	1,518.6	525.5	1,270.4	63,226.7	61,956.3	68.8	
2007 SF Total:	352.6	161.2	12,132.4	28,372.8	22,919.0	1,621.1	561.4	1,354.2	67,474.7	66,120.5	72.6	
2006 SF Total:	348.7	159.4	11,996.9	28,048.8	22,659.4	1,602.9	555.2	1,338.5	66,709.9	65,371.5	72.5	
2005 SF Total:	342.4	156.5	11,770.0	27,496.3	22,219.5	1,572.2	545.0	1,311.2	65,413.1	64,101.9	71.5	
2004 SF Total:	414.1	88.5	10,929.5	26,217.6	21,932.1	1,452.8	725.4	2,542.2	64,302.2	61,760.0	69.8	
2003 SF Total:	400.1	85.5	10,560.2	25,333.0	21,192.3	1,403.8	700.9	2,456.8	62,132.5	59,675.7	67.7	
2002 SF Total:	398.4	84.7	10,518.2	25,216.8	21,092.5	1,397.5	698.0	2,440.5	61,846.6	59,406.1	67.9	
2001 SF Total:	397.4	84.2	10,493.3	25,149.3	21,034.7	1,393.8	696.3	2,431.5	61,680.4	59,249.0	66.6	
2000 SF Total:	490.2	85.5	11,963.1	24,986.6	22,499.7	1,442.1	747.8	2,432.2	64,410.0	62,215.0	69.9	
1999 SF Total:	799.6	81.8	12,969.2	22,870.2	23,947.3	727.3	1,439.9	1,026.8	63,862.0	62,835.2	70.6	
1998 SF Total:	762.8	78.2	12,387.9	21,877.6	22,868.9	694.6	1,369.7	993.3	61,032.7	60,039.4	67.5	
1997 SF Total:	741.0	75.9	12,029.0	21,233.7	22,208.0	674.5	1,331.8	960.6	59,254.5	58,293.9	67.5	
1996 SF Total:	693.1	71.0	11,249.4	19,855.4	20,769.0	630.8	1,245.9	897.5	55,412.0	54,514.5	61.3	
1995 SF Total:	707.7	72.5	11,490.8	20,288.7	21,213.5	644.3	1,271.3	919.6	56,608.4	55,688.7	63.1	
1994 SF Total:	696.3	71.3	11,307.4	19,967.5	20,874.6	634.0	1,250.6	905.9	55,707.7	54,801.8	61.6	
1993 SF Total:	652.8	66.9	10,606.8	18,742.1	19,579.3	557.5	1,171.0	854.4	52,268.0	51,376.4	57.7	
1992 SF Total:	862.8	NA	10,702.0	17,610.6	17,412.9	288.8	1,409.9	1,259.6	49,546.6	48,287.0	54.2	
1991 SF Total:	684.6	NA	9,540.4	19,537.8	16,103.2	268.3	1,423.7	1,004.4	48,562.4	47,558.0	53.4	
1990 SF Total:	895.1	NA	9,096.9	17,201.8	17,373.0	163.1	1,306.8	685.9	46,722.6	46,036.7	51.3	
1989 SF Total:	433.2	NA	8,671.4	15,149.6	15,115.6	88.9	1,279.9	121.0	40,859.6	40,738.6	46.2	
1988 SF Total:	242.3	NA	4,833.6	7,739.7	10,481.4	0.0	649.2	39.4	23,985.6	23,946.2	31.9	
TOTAL CITY SINGLE FAMILY PERCENTAGE BREAKDOWN BY MATERIAL (Estimated from periodic composition studies) ²												
	FERROUS					CONTAMINANTS		TOTAL				
	ALUM	METAL	GLASS MIXED PAPER	NEWS PAPER	PLASTICS	TIN	TOTAL					
2009-2013 Avg:	1.0%	0.5%	17.9%	48.8%	20.3%	4.6%	1.3%	5.6%	100%			
2005-2008 Avg:	0.5%	0.2%	18.0%	42.0%	34.0%	2.4%	0.8%	2.0%	100%			
2001-2004 Avg:	0.6%	0.1%	17.0%	40.8%	34.1%	2.3%	1.1%	3.9%	100%			
2000 Avg:	0.8%	0.1%	18.6%	38.8%	34.9%	2.2%	1.2%	3.8%	100%			
1993-1999 Avg:	1.2%	0.1%	20.3%	35.9%	37.5%	1.1%	2.2%	1.6%	100%			
1992 Avg:	1.7%	NA	21.6%	35.5%	35.1%	0.6%	2.8%	2.5%	100%			
1991 Avg:	1.4%	NA	19.6%	40.2%	33.2%	0.6%	2.9%	2.1%	100%			
1990 Avg:	1.9%	NA	19.5%	36.8%	37.2%	0.3%	2.8%	1.5%	100%			
1989 Avg:	1.1%	NA	21.2%	37.1%	37.0%	0.2%	3.1%	0.3%	100%			
1988 Avg:	1.0%	NA	20.2%	32.3%	43.7%	0.0%	2.7%	0.2%	100%			

1 Single Family refers to customers that receive can garbage service. Tonnage data includes contaminants.

2 Composition Studies can be found on the web at: <http://www.seattle.gov/util/Documents/Reports/SolidWasteReports/CompositionStudies/index.htm>

MULTI FAMILY TONS COLLECTED (Includes contaminants)						MULTIFAMILY CUSTOMER DATA ¹									
Yr	Mo	Cleanscapes	Waste Management	Total Apt Tons	Cumulative Apt Tons	Cleanscapes Apt Bldgs	WM Apt Bldgs	Total Apt Bldgs	CS Apt Units	WM Apt Units	Total Apt Units	Units/Bldg	Lbs/ Bldg	Lbs/ Unit	
2012	1	1,097.5	777.9	1,875.4	1,875.4	3,077	2,226	5,303	81,533	40,831	122,364	23	707.3	30.7	
2012	2	975.4	738.4	1,713.8	3,589.2	3,080	2,227	5,307	81,703	40,789	122,492	23	645.8	28.0	
2012	3	1,032.0	771.6	1,803.7	5,392.8	3,085	2,228	5,313	81,826	40,833	122,659	23	679.0	29.4	
2012	4	995.8	743.3	1,739.1	7,132.0	3,176	2,283	5,459	82,494	41,021	123,515	23	637.2	28.2	
2012	5	1,089.3	810.8	1,900.1	9,032.1	3,181	2,284	5,465	82,932	41,058	123,990	23	695.4	30.6	
2012	6	1,050.0	738.9	1,788.9	10,821.0	3,180	2,282	5,462	83,170	41,027	124,197	23	655.0	28.8	
2012	7	1,071.2	619.1	1,690.3	12,511.3	3,177	2,280	5,457	83,092	41,020	124,112	23	619.5	27.2	
2012	8	1,095.2	890.1	1,985.4	14,496.6	3,183	2,281	5,464	83,381	41,296	124,677	23	726.7	31.8	
2012	9	961.7	681.6	1,643.3	16,139.9	3,191	2,285	5,476	83,442	41,312	124,754	23	600.2	26.3	
2012	10	1,136.8	786.7	1,923.4	18,063.3	3,199	2,285	5,484	84,207	41,264	125,471	23	701.5	30.7	
2012	11	1,194.8	869.6	2,064.4	20,127.8	3,200	2,289	5,489	84,212	41,317	125,529	23	752.2	32.9	
2012	12	1,151.1	866.8	2,017.9	22,145.6	3,201	2,292	5,493	84,209	41,489	125,698	23	734.7	32.1	
2013	1	1,166.6	846.5	2,013.0	2,013.0	3,209	2,297	5,506	84,905	41,934	126,839	23	731.2	31.7	
2013	2	976.5	687.4	1,663.9	3,676.9	3,213	2,300	5,513	85,061	42,115	127,176	23	603.6	26.2	
2013	3	1,019.5	721.8	1,741.3	5,418.2	3,216	2,299	5,515	85,246	42,131	127,377	23	631.5	27.3	
2013	4	1,106.1	786.0	1,892.1	7,310.3	3,219	2,304	5,523	86,029	42,540	128,569	23	685.2	29.4	
2013	5	1,111.1	776.0	1,887.1	9,197.4	3,220	2,309	5,529	86,108	42,654	128,762	23	682.6	29.3	
2013	6	1,024.1	702.5	1,726.5	10,924.0	3,218	2,305	5,523	85,450	42,798	128,248	23	625.2	26.9	
2013	7	1,140.4	802.3	1,942.7	12,866.7	3,225	2,307	5,532	85,965	42,817	128,782	23	702.4	30.2	
2013	8	1,110.5	760.0	1,870.5	14,737.2	3,229	2,310	5,539	86,335	42,811	129,146	23	675.4	29.0	
2013	9	1,130.8	780.5	1,911.3	16,648.5	3,234	2,314	5,548	86,651	43,063	129,714	23	689.0	29.5	
2013	10	1,180.5	803.1	1,983.6	18,632.1	3,244	2,316	5,560	87,532	43,255	130,787	24	713.5	30.3	
2013	11	1,074.7	769.5	1,844.2	20,476.3	3,247	2,321	5,568	87,644	43,453	131,097	24	662.4	28.1	
2013	12	1,165.9	811.9	1,977.9	22,454.2	3,253	2,335	5,588	87,838	43,529	131,367	24	707.9	30.1	

TOTAL MULTIFAMILY PERCENTAGE BREAKDOWN BY MATERIAL (Estimated from periodic composition studies)														
	FERROUS METAL		GLASS MIXED PAPER	NEWSPAPER	PLASTICS	TIN	CONTAM-INANTS	TOTAL w/cont	TOTAL w/o cont	Avg Lbs/Bldg	Avg Lbs/Unit			
2013 MF Total:	166.5	63.6	3,838.2	11,981.1	3,822.8	803.7	209.8	1,568.5	22,454.2	20,885.7	675.8	29.0		
2012 MF Total:	164.2	62.7	3,785.4	11,816.4	3,770.3	792.6	206.9	1,546.9	22,145.6	20,598.7	679.5	29.7		
2011 MF Total:	147.8	56.5	3,407.9	10,637.9	3,394.3	713.6	186.3	1,392.6	19,936.8	18,544.2	626.7	27.2		
2010 MF Total:	155.7	59.5	3,589.4	11,204.5	3,575.1	751.6	196.2	1,466.8	20,998.8	19,532.0	668.8	29.6		
2009 MF Total:	143.8	54.9	3,315.7	10,350.2	3,302.5	694.3	181.3	1,355.0	19,397.8	18,042.8	621.9	28.1		
2008 MF Total:	90.4	106.2	3,854.6	9,275.5	6,014.2	441.0	150.3	529.8	20,461.9	21,951.6	626.9	28.7		
2007 MF Total:	93.0	109.4	3,964.5	9,539.0	6,186.5	453.6	154.6	544.9	21,045.5	20,500.6	647.0	30.2		
2006 MF Total:	87.1	104.2	3,705.6	8,902.9	5,790.8	424.1	144.6	509.2	19,668.4	19,159.2	605.8	28.8		
2005 MF Total:	79.8	94.5	3,400.4	8,177.0	5,309.0	389.1	132.6	467.3	18,049.7	17,582.4	582.3	27.6		
2004 MF Total:	82.3	30.7	2,690.8	6,638.0	5,556.4	259.6	128.3	464.2	15,850.3	15,386.0	554.1	26.3		
2003 MF Total:	76.8	28.6	2,509.7	6,190.4	5,180.8	242.0	119.6	432.9	14,780.8	14,347.9	532.6	25.6		
2002 MF Total:	71.5	26.6	2,331.1	5,754.6	4,822.7	225.3	111.4	402.5	13,745.6	13,343.1	509.3	24.5		
2001 MF Total:	70.0	26.0	2,282.6	5,636.3	4,725.9	220.7	109.2	394.2	13,465.0	13,070.8	550.7	25.9		
2000 MF Total:	65.0	17.8	2,050.6	5,269.2	4,004.9	179.9	103.5	292.2	11,983.2	11,691.0	497.0	25.0		
1999 MF Total:	68.6	NA	1,908.6	5,647.9	2,763.6	87.3	66.4	111.9	10,654.3	10,542.4	654.7	27.6		
1998 MF Total:	70.2	NA	1,835.2	5,020.4	2,978.4	99.6	106.1	129.0	10,238.8	10,109.8	669.2	28.1		
1997 MF Total:	68.9	NA	1,646.4	4,686.3	2,521.9	87.3	114.5	89.5	9,214.8	9,125.3	639.2	26.8		
1996 MF Total:	69.9	NA	1,527.3	3,296.6	3,041.2	78.7	113.3	61.8	8,188.7	8,126.9	613.5	24.8		
1995 MF Total:	49.6	NA	1,458.3	2,555.7	2,995.5	13.5	120.0	NA	7,192.4	7,192.4	608.2	22.9		
1994 MF Total:	51.3	NA	1,224.6	3,013.2	1,678.1	0.8	111.0	NA	6,079.0	6,079.0	657.8	23.6		
1993 MF Total:	47.0	NA	769.5	2,517.4	435.6	0.3	85.9	NA	3,855.7	3,855.7	646.0	20.2		
1992 MF Total:	3.3	NA	736.2	1,438.5	726.7	NA	68.7	NA	2,973.4	2,973.4	753.3	24.4		
1991 MF Total:	0.9	NA	410.6	661.7	732.7	NA	23.6	NA	1,829.5	1,829.5	733.5	23.4		
1990 MF Total:	NA	NA	228.7	500.8	358.4	NA	6.3	NA	1,094.2	1,094.2	712.1	22.8		
1989 MF Total:	NA	NA	69.9	42.7	192.8	NA	NA	NA	305.4	305.4	NA	NA		

MULTI FAMILY PERCENTAGE BREAKDOWN BY MATERIAL ²										
	FERROUS METAL		GLASS MIXED PAPER	NEWS PAPER	PLASTIC	TIN	CONTAM-INANTS	TOTAL		
2009-2013 Avg:	0.7%	0.3%	17.1%	53.4%	17.0%	3.6%	0.9%	7.0%	100%	
2005-2008 Avg:	0.4%	0.5%	18.8%	45.3%	29.4%	2.2%	0.7%	2.6%	100%	
2001-2004 Avg:	0.5%	0.2%	17.0%	41.9%	35.1%	1.6%	0.8%	2.9%	100%	
2000 Avg:	0.5%	0.1%	17.1%	44.0%	33.4%	1.5%	0.9%	2.4%	100%	
1999 Avg:	0.6%	NA	17.9%	53.0%	25.9%	0.8%	0.6%	1.1%	100%	
1998 Avg:	0.7%	NA	17.9%	49.0%	29.1%	1.0%	1.0%	1.3%	100%	
1997 Avg:	0.7%	NA	17.9%	50.9%	27.4%	0.9%	1.2%	1.0%	100%	
1996 Avg:	0.9%	NA	18.7%	40.3%	37.1%	1.0%	1.4%	0.8%	100%	
1995 Avg:	0.7%	NA	20.3%	35.5%	41.6%	0.2%	1.7%	NA	100%	
1994 Avg:	0.8%	NA	20.1%	49.6%	27.6%	0.0%	1.8%	NA	100%	
1993 Avg:	1.2%	NA	20.0%	65.3%	11.3%	0.0%	2.2%	NA	100%	
1992 Avg:	NA	NA	24.8%	48.4%	24.4%	NA	2.3%	NA	100%	
1991 Avg:	NA	NA	22.4%	36.2%	40.0%	NA	1.3%	NA	100%	
1990 Avg:	NA	NA	20.9%	45.8%	32.8%	NA	0.6%	NA	100%	
1989 Avg:	NA	NA	22.3%	14.0%	63.1%	NA	0.0%	NA	100%	

¹ Multi Family refers to customers that receive dumpster garbage service. Tonnage data includes contaminants.
² Composition Studies can be found on the web at: <http://www.seattle.gov/util/Documents/Reports/SolidWasteReports/CompositionStudies/index.htm>

TOTAL CITY RESIDENTIAL RECYCLING TONS COLLECTED (Includes contaminants)						COMMERCIAL		SPECIAL ITEMS						
Yr	Mo	Waste		Total Tons	Cumulative Tons	BUSINESS RECYCLE PROGRAM	MOTOR OIL (Gallons)	ELEC-TRONICS (units)	APPLIANCES (units)					
		Cleanscapes	Management											
2012	1	3,392.9	3,321.8	6,714.8	6,714.8	219.5	147	10	15					
2012	2	2,973.7	3,486.3	6,460.0	13,174.8	207.6	214	9	29					
2012	3	3,105.8	3,325.4	6,431.3	19,606.0	236.5	1645	56	140					
2012	4	3,026.4	3,268.5	6,294.9	25,900.9	242.7	1956	18	132					
2012	5	3,345.5	3,609.0	6,954.5	32,855.4	269.0	2004	18	132					
2012	6	3,132.7	3,379.6	6,512.3	39,367.7	236.8	1854	60	114					
2012	7	3,229.8	2,827.3	6,057.2	45,424.8	222.1	1225	40	105					
2012	8	3,361.4	4,327.9	7,689.3	53,114.1	238.4	1220	30	115					
2012	9	2,963.5	3,186.6	6,150.1	59,264.2	227.7	1200	35	135					
2012	10	3,400.9	3,615.0	7,015.9	66,280.2	267.2	1180	36	68					
2012	11	3,524.4	3,745.7	7,270.0	73,550.2	259.3	876	32	96					
2012	12	3,441.0	3,729.1	7,170.1	80,720.3	247.6	500	8	52					
2013	1	3,562.6	3,895.1	7,457.7	7,457.7	259.4	170	3	15					
2013	2	2,817.9	3,060.7	5,878.6	13,336.3	220.8	180	8	18					
2013	3	2,969.5	3,183.6	6,153.1	19,489.4	231.2	200	10	27					
2013	4	3,193.8	3,467.3	6,661.1	26,150.5	235.0	184	13	22					
2013	5	3,322.6	3,568.3	6,890.9	33,041.4	243.8	247	7	17					
2013	6	3,009.9	3,235.5	6,245.4	39,286.8	219.3	247	9	16					
2013	7	3,372.8	3,725.2	7,097.9	46,384.7	240.2	215	5	21					
2013	8	3,237.8	3,486.0	6,723.8	53,108.5	240.7	269	12	14					
2013	9	3,249.1	3,452.9	6,702.0	59,810.5	271.2	218	5	20					
2013	9	3,429.9	3,618.7	7,048.7	66,859.2	287.5	244	16	23					
2013	9	3,152.3	3,417.4	6,569.6	73,428.8	283.8	150	4	20					
2013	9	3,495.8	3,792.7	7,288.5	80,717.3	269.7	121	6	9					
TOTAL CITY PERCENTAGE BREAKDOWN BY MATERIAL (Estimated from periodic composition studies)						COMMERCIAL		SPECIAL ITEMS						
	ALUM	FERROUS METAL		GLASS MIXED PAPER	NEWS PAPER	PLASTICS	TIN	CONTAM-INANTS	TOTAL w/cont	TOTAL w/o cont	BUSINESS RECYCLE PROGRAM	MOTOR OIL (Gallons)	ELEC-TRONICS (units)	APPLIANCES (units)
2013 Total:	730.3	344.4	14,258.7	40,436.1	15,678.5	3,483.3	977.5	4,808.6	80,717.3	75,908.7	3,002.5	2,445	98	222
2012 Total:	731.0	345.1	14,261.7	40,423.6	15,689.3	3,486.6	978.7	4,804.4	80,720.3	75,915.9	2,874.4	14,021	352	1,133
2011 Total:	734.3	348.6	14,247.1	40,236.2	15,726.3	3,500.8	984.8	4,763.0	80,541.0	75,778.1	2,689.7	3,035	151	325
2010 Total:	745.7	353.4	14,493.9	40,981.2	15,981.3	3,555.6	999.5	4,857.5	81,968.0	77,110.6	2,896.5	3,105	147	483
2009 Total:	750.8	357.3	14,534.9	40,986.1	16,066.7	3,579.2	1,007.7	4,843.5	82,126.2	77,282.8	3,947.9	1,132	156	417
2008 Total:	420.3	257.1	15,216.3	35,869.8	27,489.6	1,959.6	675.8	1,800.2	83,688.6	83,907.9				
2007 Total:	445.6	270.7	16,097.0	37,911.7	29,105.5	2,074.7	716.0	1,899.1	88,520.3	86,621.1				
2006 Total:	435.8	263.7	15,702.5	36,951.7	28,450.2	2,027.0	699.8	1,847.6	86,378.3	84,530.7				
2005 Total:	422.2	251.1	15,170.3	35,673.3	27,528.5	1,961.3	677.6	1,778.5	83,462.8	81,684.3				
2004 Total:	496.4	119.2	13,620.3	32,855.6	27,488.5	1,712.4	853.7	3,006.4	80,152.4	77,146.0				
2003 Total:	476.8	114.2	13,069.8	31,523.3	26,373.1	1,645.9	820.5	2,889.7	76,913.3	74,023.7				
2002 Total:	469.9	111.2	12,849.3	30,971.4	25,915.2	1,622.7	809.4	2,843.0	75,592.1	72,749.2				
2001 Total:	467.5	110.2	12,775.9	30,785.6	25,760.6	1,614.5	805.5	2,825.7	75,145.4	72,319.7				
2000 Total:	555.2	103.3	14,013.8	30,255.8	26,504.6	1,622.0	851.3	2,724.4	76,393.1	73,906.0				
1999 Total:	868.2	78.2	14,877.8	28,518.0	26,710.9	814.5	1,506.3	1,138.7	74,516.3	73,377.6				
1998 Total:	833.0	75.9	14,223.1	26,898.0	25,847.3	794.2	1,475.8	1,122.3	71,271.5	70,149.2				
1997 Total:	809.9	71.0	13,675.5	25,920.0	24,729.9	761.8	1,446.3	1,050.1	68,469.3	67,419.2				
1996 Total:	763.0	72.5	12,776.7	23,152.0	23,810.2	709.5	1,359.1	959.3	63,600.7	62,641.4				
1995 Total:	757.3	71.3	12,949.0	22,844.4	24,208.9	657.8	1,391.3	919.6	63,800.8	62,881.2				
1994 Total:	747.6	66.9	12,532.0	22,980.7	22,552.7	634.9	1,361.5	905.9	61,786.7	60,880.8				
1993 Total:	699.8	NA	11,376.3	21,259.5	20,014.8	557.8	1,257.0	854.4	56,123.7	55,232.1				
1992 Total:	866.1	NA	11,438.2	19,049.1	18,139.6	288.8	1,478.6	1,259.6	52,520.0	51,260.4				
1991 Total:	685.5	NA	9,951.0	20,199.5	16,835.9	268.3	1,447.3	1,004.4	50,392.0	49,387.5				
1990 Total:	895.1	NA	9,325.6	17,702.6	17,731.4	163.1	1,313.1	685.9	47,816.8	47,130.9				
1989 Total:	433.2	NA	8,741.3	15,192.3	15,308.4	88.9	1,279.9	121.0	41,165.0	41,044.0				
1988 Total:	242.3	NA	4,833.6	7,739.7	10,481.4	NA	649.2	39.4	23,985.6	23,946.2				

July 25-Aug 2, 2012: Waste Management work stoppage due to strike.

March 30, 2009: New contracts began. Cleanscapes and Waste Management are contracted haulers.

Business Recycling tons included in residential tons prior to 2009.

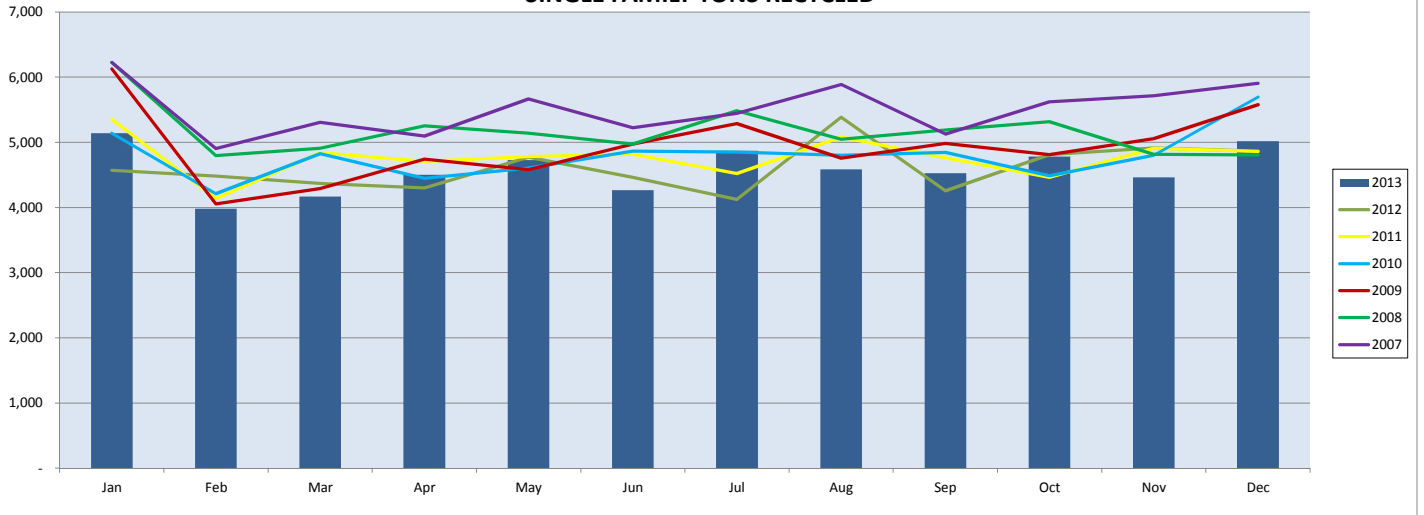
Jan 2005: Ban on recycle in garbage (except plastics) began

April 2000: New contract begins. Allied Waste and Waste Mangement are contracted haulers

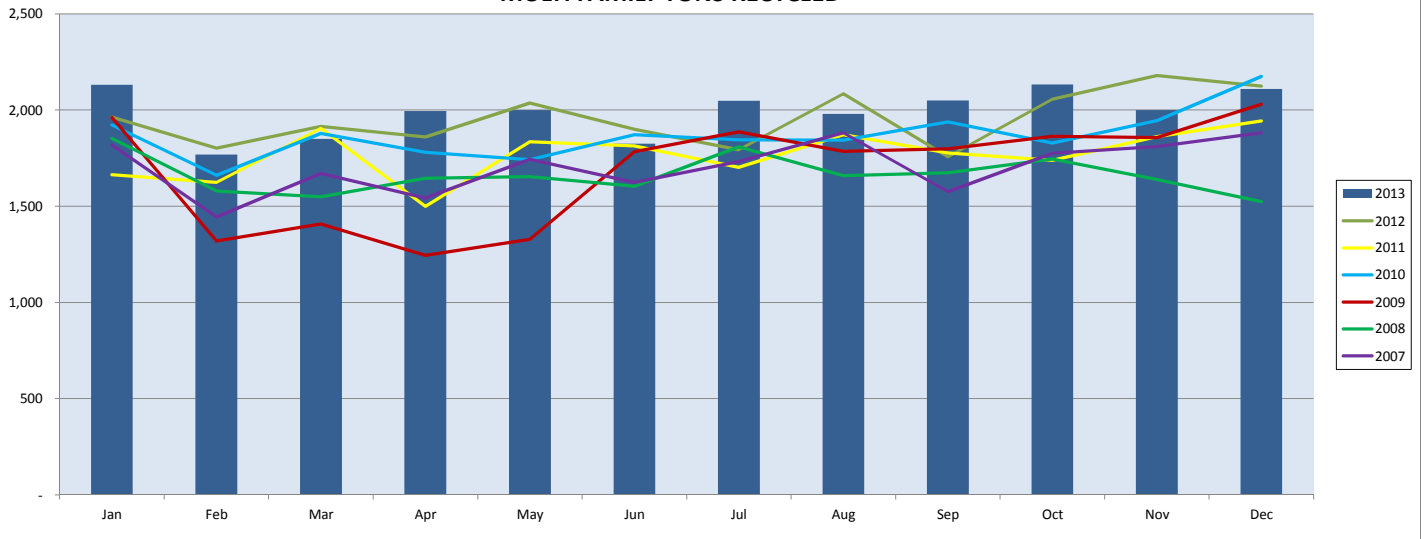
New materials (polycoated paper, aseptic packaging and additional plastics) added to program

Jan 2000: New Billing system (Banner/CCSS)

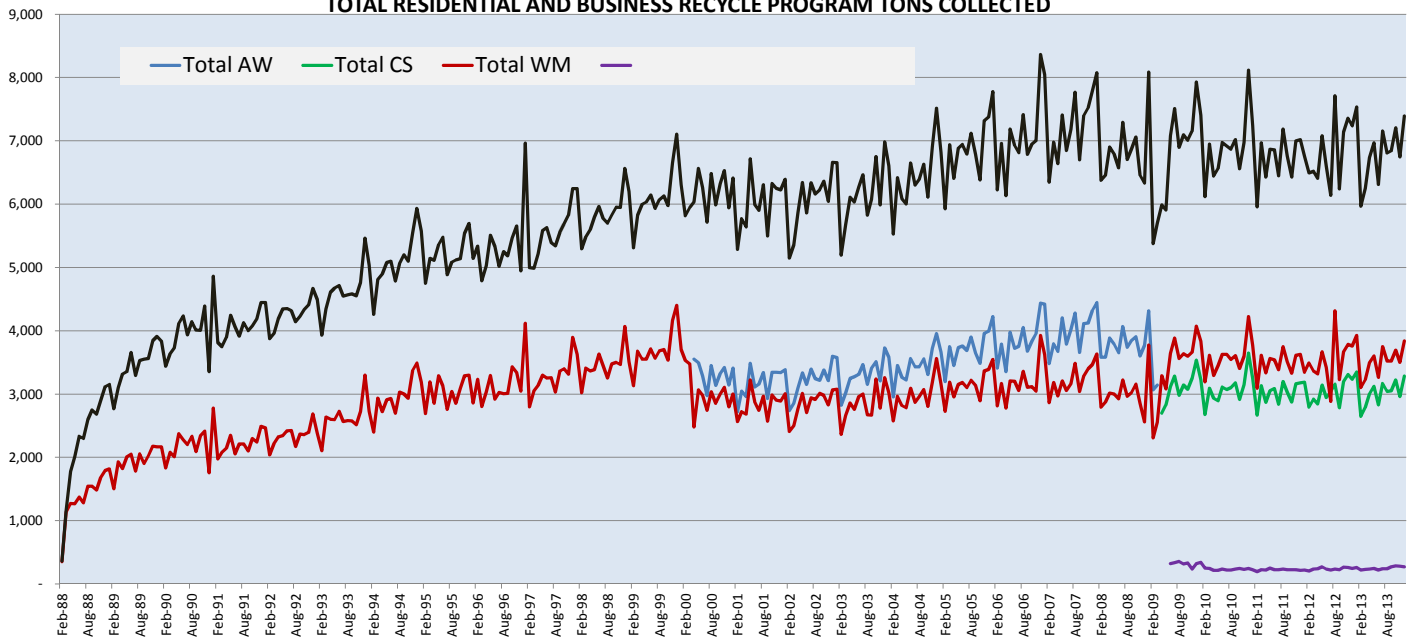
**CITY OF SEATTLE
SINGLE FAMILY TONS RECYCLED**



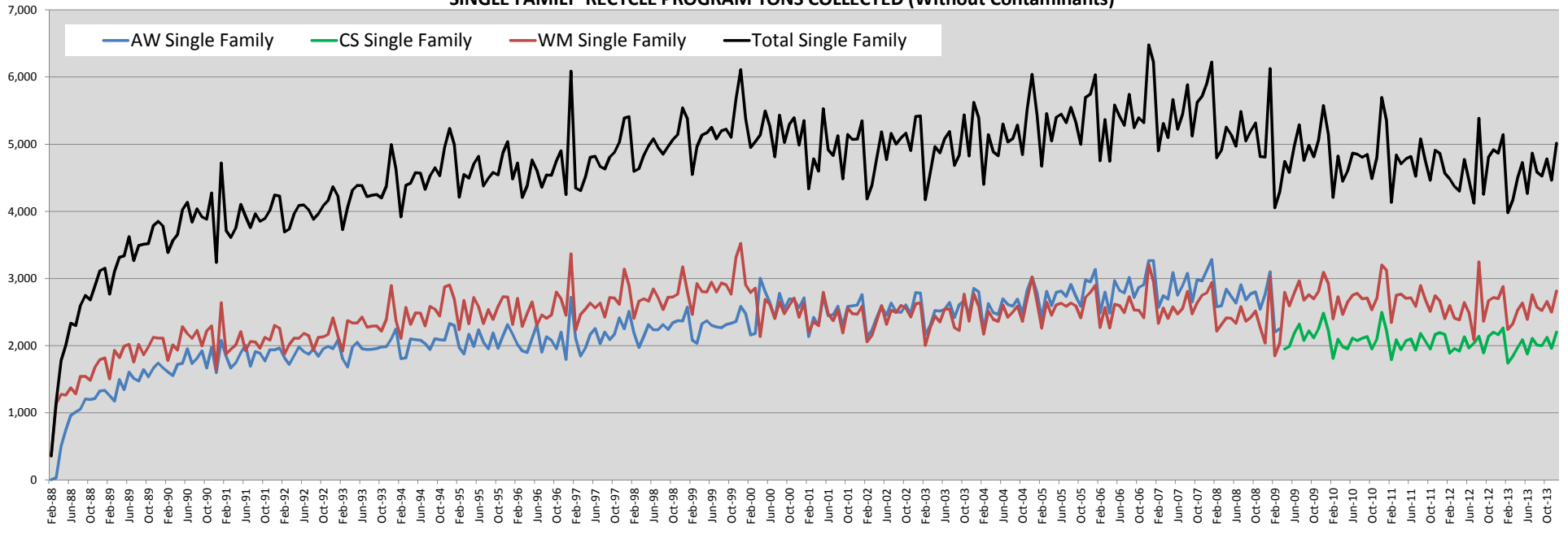
**CITY OF SEATTLE
MULTI FAMILY TONS RECYCLED**



**CITY OF SEATTLE
TOTAL RESIDENTIAL AND BUSINESS RECYCLE PROGRAM TONS COLLECTED**



**CITY OF SEATTLE
SINGLE FAMILY RECYCLE PROGRAM TONS COLLECTED (Without Contaminants)**



**CITY OF SEATTLE
MULTI FAMILY RECYCLE PROGRAM TONS COLLECTED (Without Contaminants)**

