

GARBAGE REPORT

4th Quarter 2011

Seattle Public Utilities, Economic Services Section

Report Date: March 28, 2012

Phone: (206) 684-4143

Total City Tonnage Breakdown

Self Haul

Q4 Self Haul Cars ¹	1,364 Tons	4.2% increase vs. same period in 2010
2011 Cumulative Self Haul Cars:	6,206 Tons	0.4% decrease vs. same period in 2010
Q4 Self Haul Trucks ² :	14,974 Tons	10.5% decrease vs. same period in 2010
2011 Cumulative Self Haul Trucks:	64,827 Tons	11.3% decrease vs. same period in 2010
2011 Cumulative Self Haul Cars & Trucks:	71,032 Tons	10.4% decrease vs. same period in 2010

Residential

Q4 Residential Collection	27,935 Tons	4.4% decrease vs. same period in 2010
2011 Cumulative Residential Collection:	112,773 Tons	1.2% decrease vs. same period in 2010

Commercial

Q4 Commercial Tons	32,992 Tons	4.3% decrease vs. same period in 2010
2011 Cumulative Commercial Tons:	135,536 Tons	4.7% decrease vs. same period in 2010

Total

Q4 Total Tons Disposed:	77,265 Tons	5.5% decrease vs. same period in 2010
2011 Cumulative Total Tons Disposed:	319,341 Tons	4.8% decrease vs. same period in 2010

Selected Statistics for Q4 2011

Average Pounds per Household per Month

Single Family Garbage Can Customers:	64	(162,705 households)
Multi Family Garbage Dumpster Customers:	65	(127,678 households)

Recycling & Disposal Station Self Haul Garbage Rates³:

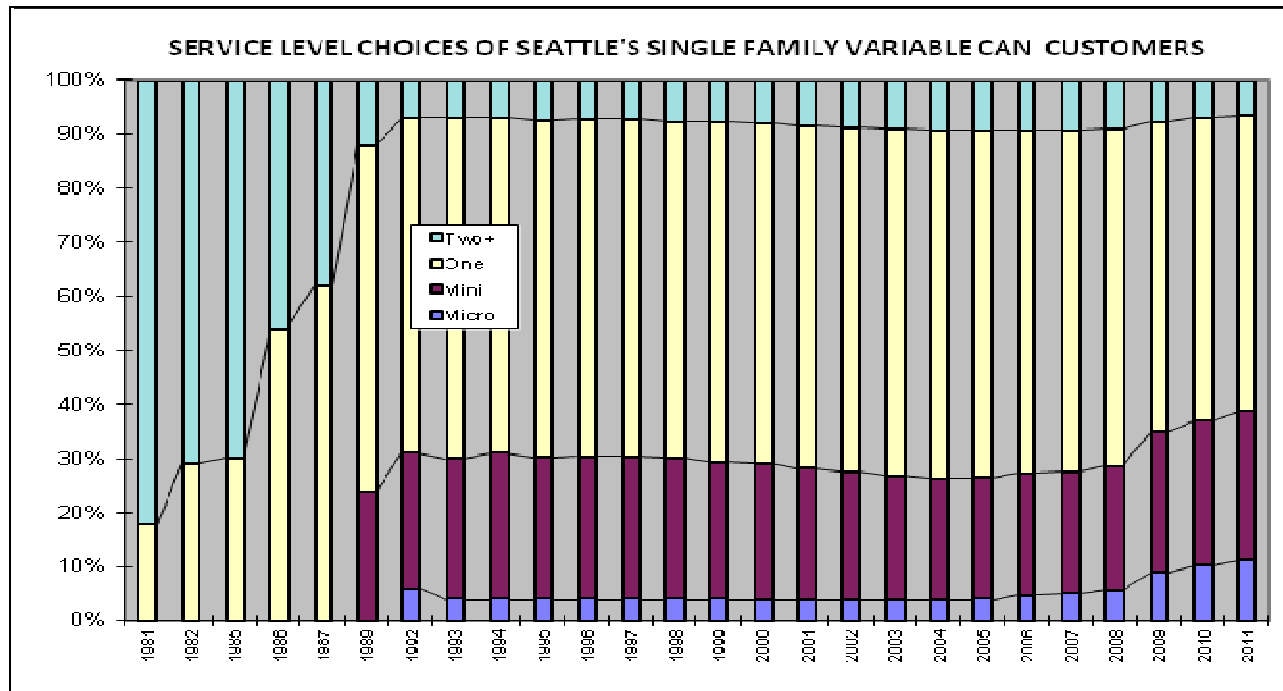
Cars: \$30.00 per trip Trucks: \$145.00 per ton (\$30.00 minimum)

¹ Car tons calculated based on 480.8 pounds per car for 2009 to present according to study done from Jan-Dec 2008

² An estimated 53% of the self-haul truck tons are commercial according to a waste stream sampling study conducted in 2000.

³ Vans & pickup trucks pay the per ton truck rate.

Variable Can Customer Service Levels¹



	Micro	Mini	One	Two+
1981			18.00%	82.00%
1982			29.00%	71.00%
1985			30.00%	70.00%
1986			54.00%	46.00%
1987			62.00%	38.00%
1989		24.00%	64.00%	12.00%
1992	6.00%	25.00%	62.00%	7.00%
1993	4.00%	26.00%	63.00%	7.00%
1994	4.00%	27.00%	62.00%	7.00%
1995	4.06%	26.15%	62.44%	7.35%
1996	4.04%	26.23%	62.59%	7.14%
1997	4.04%	26.23%	62.59%	7.14%
1998	4.16%	25.88%	62.35%	7.61%
1999	4.06%	25.60%	63.62%	7.72%
2000	3.93%	25.08%	63.02%	7.97%
2001	3.96%	24.24%	63.32%	8.49%
2002	3.85%	23.62%	63.72%	8.82%
2003	3.84%	22.85%	64.23%	9.08%
2004	3.86%	22.31%	64.54%	9.30%
2005	4.13%	22.22%	64.37%	9.28%
2006	4.72%	22.49%	63.57%	9.21%
2007	5.05%	22.50%	63.17%	9.28%
2008	5.66%	22.85%	62.45%	9.04%
2009	8.93%	25.89%	57.51%	7.67%
2010	10.21%	26.69%	56.08%	7.02%
2011	11.31%	27.45%	54.72%	6.53%

Monthly Variable Can Rates:

Micro (12 gal)	\$16.55
Mini (19 gal)	\$20.30
One Can (32 gal)	\$26.40
Two Cans (64 gal)	\$52.80
Each Add'l Can	\$26.40

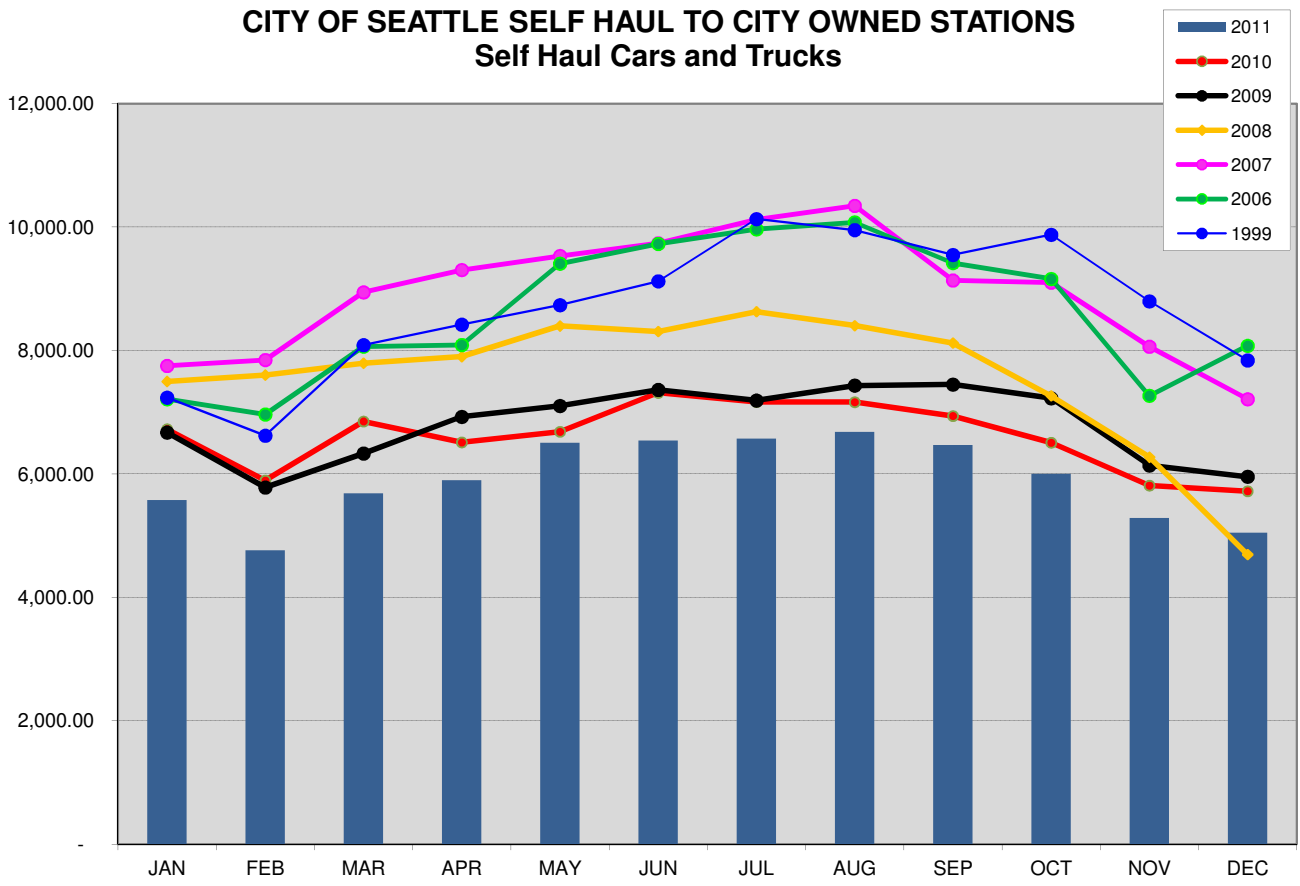
Residential Dumpster Service²

Most Common Monthly Rate
\$167.14 (+ \$28.20 per account)

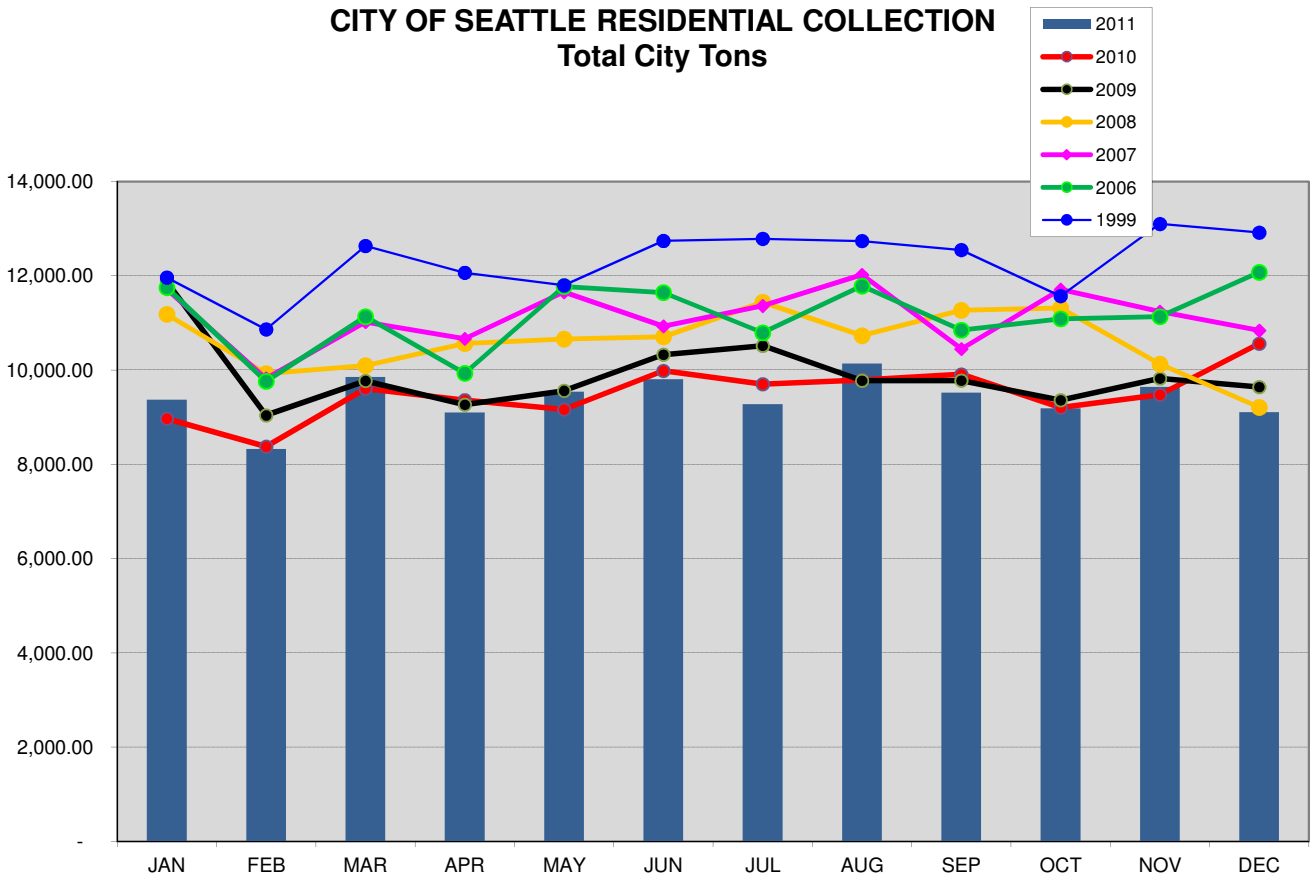
¹ Based on single-family customers only

² This is the rate for a one cubic yard un-compacted container picked up once per week, which is the most common dumpster service level. Residential dumpster service rates vary based on the number and size of containers and the number of pickups per week.

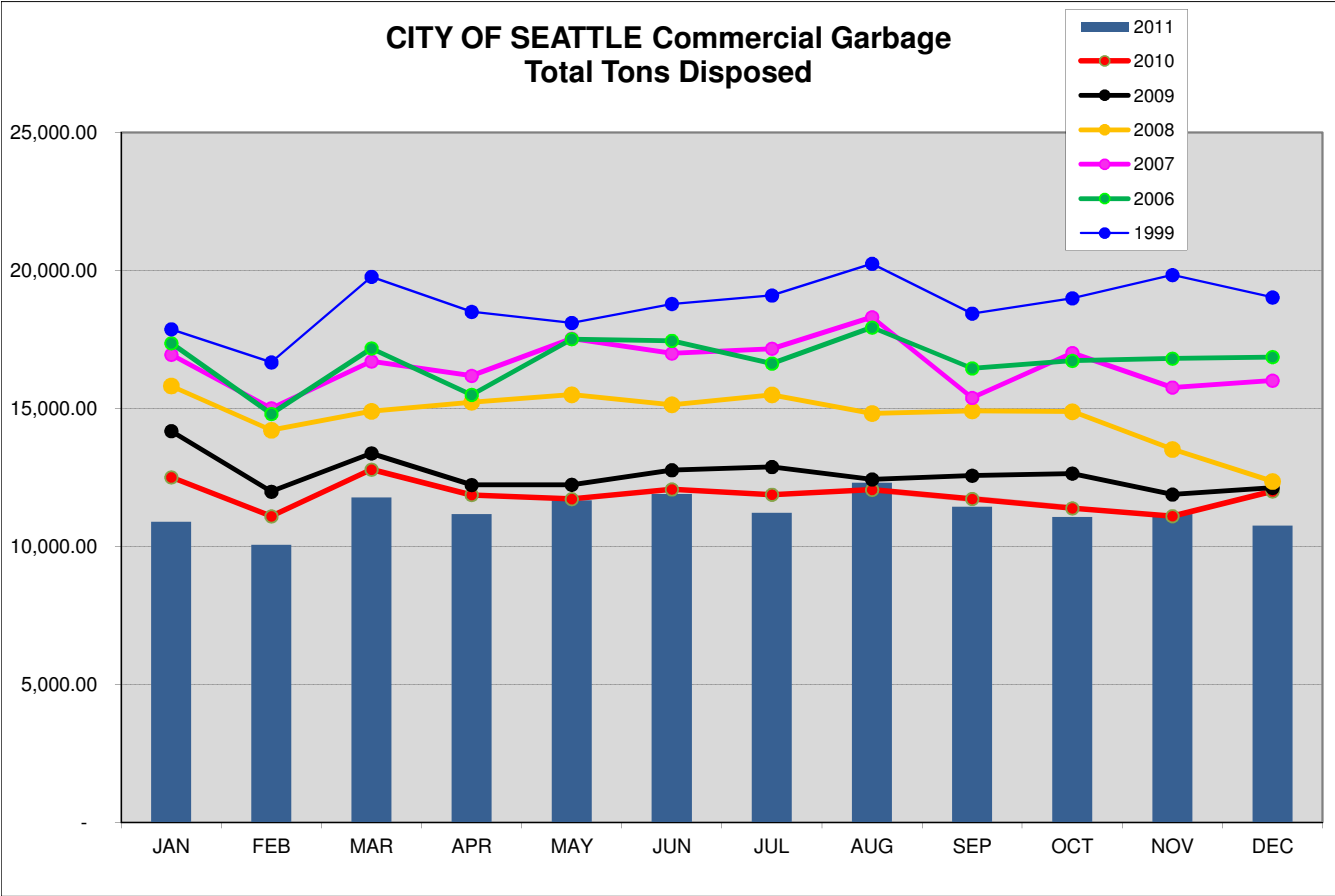
CITY OF SEATTLE SELF HAUL TO CITY OWNED STATIONS Self Haul Cars and Trucks



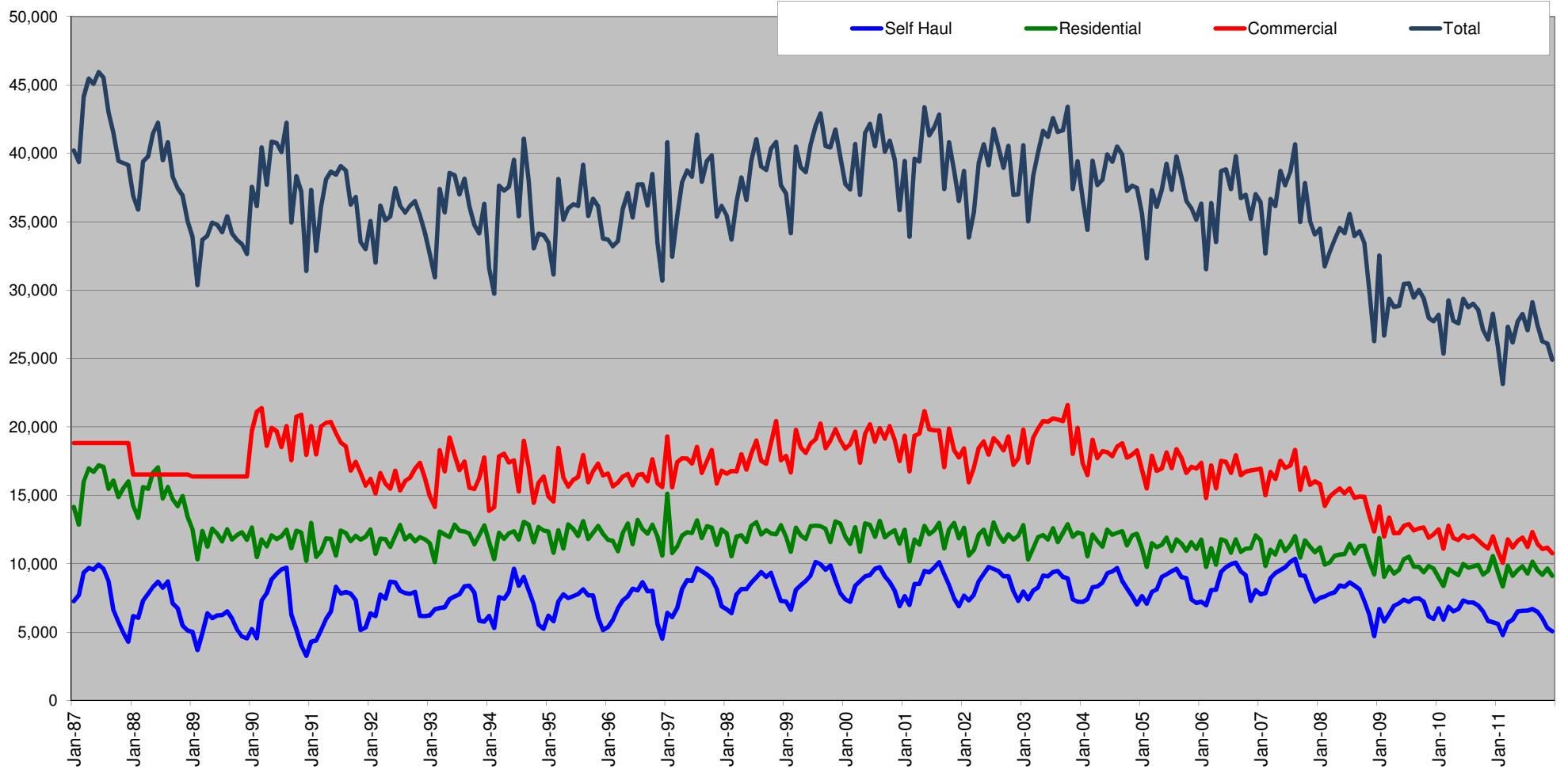
CITY OF SEATTLE RESIDENTIAL COLLECTION Total City Tons



CITY OF SEATTLE Commercial Garbage Total Tons Disposed



City of Seattle Garbage Disposal



Monthly commercial tonnage for 1987-1989 estimated from annual data.