

RECYCLING PROGRAMS

4th Quarter 2009

Seattle Public Utilities, Economic Services Section

Report Date: December 1, 2010

Phone: (206) 684-4143

TONNAGE BREAKDOWN

Single Family Tons (Without

Contaminants)

15,529 Tons	2.6%	increase vs. same quarter in 2008
Q4 2009: 58,786 Tons	0.8%	decrease vs. same quarter in 2008
Cumulative Single Family:		

Multi Family Tons (Without

Contaminants)

4,793 Tons	2.3%	decrease vs. same quarter in 2008
Q4 2009: 17,798 Tons	5.2%	decrease vs. same quarter in 2008
Cumulative Multi Family:		

Business Tons (Includes

Contaminants)

890 Tons		
Q4 2009: 3,948 Tons		
Cumulative Small Business:		

Selected Statistics for January – December 2009

Average Pounds Per Eligible Household Per Month

Single Family:	68.3	(153,489 eligible households)
Multi Family:	25.6	(117,388 eligible households)

Service Citywide:

All materials are collected every other week on the same day as garbage collection service. Beginning January 2005, for all materials except plastics, there is a recycling requirement. Beginning January 2006, the recycling requirement is being enforced by not collecting garbage cans which contain more than 10% recyclables. Apartment managers are subject to a fine for repeated violation of the ban on recyclables in garbage dumpsters.

Multi-Family buildings with dumpster garbage service can choose either apartment dumpster recycling service or single-family style curbside toter service. Most buildings with five or fewer units choose single family style curbside service. Tons collected for multi-family buildings with curbside toter recycling service are reflected in the single family (can) tonnage breakdown.

The Business Recycling Program is available to businesses with a Seattle commercial garbage account and is limited to two recycling carts, collected every other week. The Business Recycling Program is free to qualifying businesses.

Materials Citywide:

Newspaper, mixed paper, glass, aluminum, tin, PET & HDPE^bottles, ferrous metals, plastic bags (grocery bags), plastic containers (dairy/yogurt containers), milk cartons and juice boxes. In addition, up to 2 gallons of used motor oil may be set out in separate 1 gallon containers each collection day. Electronics and appliances will be picked up curbside and recycled safely upon request for a fee. (\$20 per electronic item, \$30 per appliance, \$38 per appliance containing CFC's)

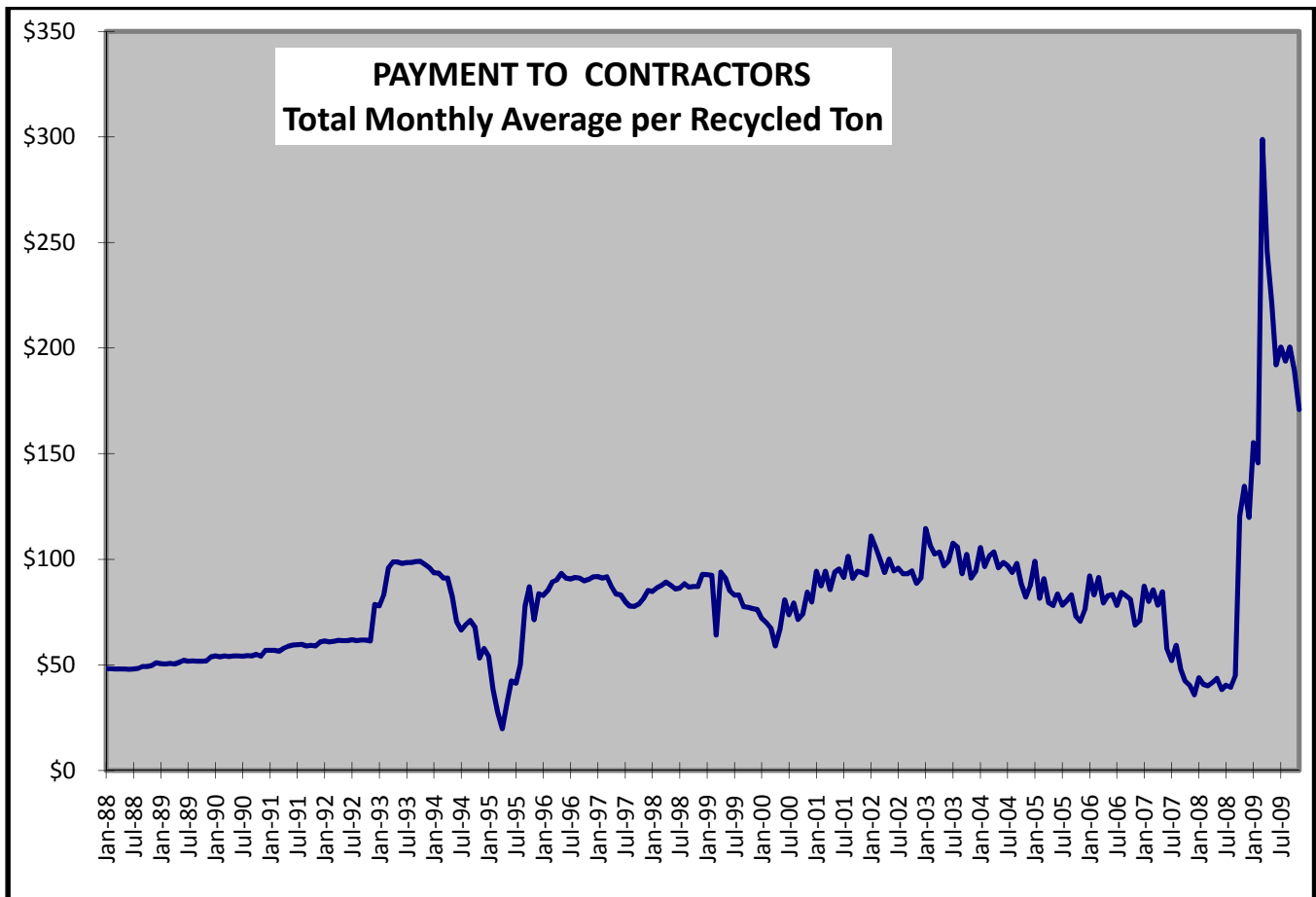
Program Costs¹

Citywide Yearly Cumulative Average Cost/Ton

1988	\$ 48.55	1995	\$ 50.27	2002	\$ 96.46	2009	\$192.62
1989	\$ 51.33	1996	\$ 89.15	2003	\$100.62		
1990	\$ 54.20	1997	\$ 84.59	2004	\$ 95.82		
1991	\$ 58.28	1998	\$ 86.88	2005	\$ 81.72		
1992	\$ 61.41	1999	\$ 86.39	2006	\$ 81.44		
1993	\$ 93.25	2000 ²	\$ 72.78	2007	\$ 64.83		
1994	\$ 77.38	2001	\$ 91.64	2008	\$ 54.28		

Avg. Cost in December 2009: \$170.88

(Payment to contractors falls when market prices for recyclable materials increase.)



¹ Figures shown reflect the average amount SPU pays the recycling contractors, which is a total contract price plus (or minus) a variable amount determined by market prices. In other words, the figures reflect the cost to the city of collection and sorting (including payment for disposal of contaminants). Revenue received for sale of the materials belongs to the contractor and as such these cost figures should not be construed as the total cost of recycling; figures also do not include costs such as liquidated damages, SPU program administration or public education.

² As of April 2000 recycling program costs include curbside (single family) apartment (multi-family) and small business programs. Prior to April 2000, the costs shown are only for the curbside program.

TOTAL CITY SINGLE FAMILY TONNAGE DATA¹

Yr	Mo	FERROUS		GLASS	MIXED PAPER	NEWS PAPER	PLASTICS	TIN	CONTAMINANTS	TOTAL w/cont	TOTAL w/o cont	Premises (Bldgs)	HOUSE-HOLDS ²	LBS PER HOUSE-HOLD
		ALUM	METAL											
2008	1	33.2	15.2	1,142.0	2,670.8	2,157.3	152.6	52.8	127.5	6,351.4	6,223.9		152,290	83.4
2008	2	25.5	11.7	879.6	2,059.5	1,662.9	117.6	40.7	98.4	4,895.8	4,797.4		152,377	64.3
2008	3	26.2	12.0	900.6	2,106.5	1,701.5	120.3	41.7	100.6	5,009.3	4,908.7		152,510	65.7
2008	4	28.0	12.8	963.3	2,256.2	1,821.5	128.8	44.5	107.8	5,362.9	5,255.1		152,825	70.2
2008	5	27.4	12.5	942.5	2,205.2	1,781.0	126.0	43.6	105.3	5,243.4	5,138.1		153,072	68.5
2008	6	26.5	12.1	912.0	2,133.7	1,723.3	121.9	42.2	101.9	5,073.6	4,971.7		153,290	66.2
2008	7	29.2	13.4	1,006.2	2,354.0	1,901.3	134.5	46.6	112.4	5,597.6	5,485.2		153,487	72.9
2008	8	26.9	12.3	925.9	2,166.3	1,749.6	123.7	42.8	103.4	5,151.0	5,047.5		153,651	67.0
2008	9	27.6	12.6	952.0	2,228.2	1,799.4	127.2	44.0	106.4	5,297.6	5,191.1		153,813	68.9
2008	10	28.3	13.0	975.1	2,280.5	1,842.1	130.3	45.1	108.9	5,423.2	5,314.3		153,837	70.5
2008	11	25.7	11.7	883.6	2,066.8	1,669.4	118.1	40.9	98.7	4,914.8	4,816.2		153,909	63.9
2008	12	25.4	11.6	879.1	2,066.6	1,666.2	117.7	40.6	99.1	4,906.2	4,807.1		154,067	63.7
2009	1	76.0	39.9	1,295.5	3,055.3	1,221.6	304.4	85.6	407.6	6,485.8	6,078.2	145,898	152,326	85.2
2009	2	50.3	26.4	857.3	2,021.9	808.4	201.4	56.6	269.8	4,292.2	4,022.4	145,998	152,461	56.3
2009	3	53.2	28.0	907.5	2,140.2	855.7	213.2	60.0	285.5	4,543.3	4,257.8	146,109	152,532	59.6
2009	4	58.8	30.9	1,003.2	2,366.0	946.0	235.7	66.3	315.7	5,022.6	4,706.9	146,220	152,642	65.8
2009	5	56.8	29.9	969.0	2,285.3	913.7	227.7	64.0	304.9	4,851.3	4,546.4	146,356	152,752	63.5
2009	6	61.7	32.4	1,051.6	2,480.0	991.6	247.1	69.5	330.9	5,264.7	4,933.8	146,496	152,881	68.9
2009	7	65.6	34.5	1,118.3	2,637.4	1,054.5	262.7	73.9	351.9	5,598.6	5,246.7	146,647	153,125	73.1
2009	8	59.0	31.0	1,006.2	2,373.2	948.8	236.4	66.5	316.6	5,037.8	4,721.1	146,763	153,234	65.8
2009	9	61.8	32.5	1,053.7	2,485.2	993.6	247.6	69.6	331.6	5,275.6	4,944.0	146,854	153,311	68.8
2009	10	59.7	31.4	1,017.8	2,400.5	959.7	239.1	67.2	320.3	5,095.7	4,775.4	146,962	153,403	66.4
2009	11	62.8	33.0	1,069.9	2,523.3	1,008.9	251.4	70.7	336.7	5,356.6	5,019.9	147,051	153,498	69.8
2009	12	69.2	36.3	1,179.3	2,781.4	1,112.1	277.1	77.9	371.1	5,904.4	5,533.3	147,071	153,489	76.9
2009 SF Total:		734.8	386.1	12,529.3	29,549.8	11,814.6	2,943.6	827.8	3,942.5	62,728.5	58,786.0		2009 Avg:	68.3
2008 SF Total:		329.9	150.8	11,361.8	26,594.3	21,475.4	1,518.6	525.5	1,270.4	63,226.7	61,956.3		2008 Avg:	68.8
2007 SF Total:		352.6	161.2	12,132.4	28,372.8	22,919.0	1,621.1	561.4	1,354.2	67,474.7	66,120.5		2007 Avg:	72.6
2006 SF Total:		348.7	159.4	11,996.9	28,048.8	22,659.4	1,602.9	555.2	1,338.5	66,709.9	65,371.5		2006 Avg:	72.5
2005 SF Total:		342.4	156.5	11,770.0	27,496.3	22,219.5	1,572.2	545.0	1,311.2	65,413.1	64,101.9		2005 Avg:	71.5
2004 SF Total:		414.1	88.5	10,929.5	26,217.6	21,932.1	1,452.8	725.4	2,542.2	64,302.2	61,760.0		2004 Avg:	69.8
2003 SF Total:		400.1	85.5	10,560.2	25,333.0	21,192.3	1,403.8	700.9	2,456.8	62,132.5	59,675.7		2003 Avg:	67.7
2002 SF Total:		398.4	84.7	10,518.2	25,216.8	21,092.5	1,397.5	698.0	2,440.5	61,846.6	59,406.1		2002 Avg:	67.9
2001 SF Total:		397.4	84.2	10,493.3	25,149.3	21,034.7	1,393.8	696.3	2,431.5	61,680.4	59,249.0		2001 Avg:	66.6
2000 SF Total:		490.2	85.5	11,963.1	24,986.6	22,499.7	1,442.1	747.8	2,432.2	64,410.0	62,215.0		2000 Avg:	69.9
1999 SF Total:		799.6	81.8	12,969.2	22,870.2	23,947.3	727.3	1,439.9	1,026.8	63,862.0	62,835.2		1999 Avg:	70.6
1998 SF Total:		762.8	78.2	12,387.9	21,877.6	22,868.9	694.6	1,369.7	993.3	61,032.7	60,039.4		1998 Avg:	67.5
1997 SF Total:		741.0	75.9	12,029.0	21,233.7	22,208.0	674.5	1,331.8	960.6	59,254.5	58,293.9		1997 Avg:	67.5
1996 SF Total:		693.1	71.0	11,249.4	19,855.4	20,769.0	630.8	1,245.9	897.5	55,412.0	54,514.5		1996 Avg:	61.3
1995 SF Total:		707.7	72.5	11,490.8	20,288.7	21,213.5	644.3	1,271.3	919.6	56,608.4	55,688.7		1995 Avg:	63.1
1994 SF Total:		696.3	71.3	11,307.4	19,967.5	20,874.6	634.0	1,250.6	905.9	55,707.7	54,801.8		1994 Avg:	61.6
1993 SF Total:		652.8	66.9	10,606.8	18,742.1	19,579.3	557.5	1,171.0	854.4	52,268.0	51,376.4		1993 Avg:	57.7
1992 SF Total:		862.8	NA	10,702.0	17,610.6	17,412.9	288.8	1,409.9	1,259.6	49,546.6	48,287.0		1992 Avg:	54.2
1991 SF Total:		684.6	NA	9,540.4	19,537.8	16,103.2	268.3	1,423.7	1,004.4	48,562.4	47,558.0		1991 Avg:	53.4
1990 SF Total:		895.1	NA	9,096.9	17,201.8	17,373.0	163.1	1,306.8	685.9	46,722.6	46,036.7		1990 Avg:	51.3
1989 SF Total:		433.2	NA	8,671.4	15,149.6	15,115.6	88.9	1,279.9	121.0	40,859.6	40,738.6		1989 Avg:	46.2
1988 SF Total:		242.3	NA	4,833.6	7,739.7	10,481.4	0.0	649.2	39.4	23,985.6	23,946.2		1988 Avg:	31.9

TOTAL CITY SINGLE FAMILY PERCENTAGE BREAKDOWN BY MATERIAL

YEAR	FERROUS		GLASS	MIXED PAPER	NEWS PAPER	PLASTICS	TIN	CONTAMINANTS	TOTAL
	ALUM	METAL							
2009 Avg:	1.2%	0.6%	20.0%	47.1%	18.8%	4.7%	1.3%	6.3%	100%
2005-2008 Avg:	0.5%	0.2%	18.0%	42.0%	34.0%	2.4%	0.8%	2.0%	100%
2001-2004 Avg:	0.6%	0.1%	17.0%	40.8%	34.1%	2.3%	1.1%	3.9%	100%
2000 Avg:	0.8%	0.1%	18.6%	38.8%	34.9%	2.2%	1.2%	3.8%	100%
1993-1999 Avg:	1.2%	0.1%	20.3%	35.9%	37.5%	1.1%	2.2%	1.6%	100%
1992 Avg:	1.7%	NA	21.6%	35.5%	35.1%	0.6%	2.8%	2.5%	100%
1991 Avg:	1.4%	NA	19.6%	40.2%	33.2%	0.6%	2.9%	2.1%	100%
1990 Avg:	1.9%	NA	19.5%	36.8%	37.2%	0.3%	2.8%	1.5%	100%
1989 Avg:	1.1%	NA	21.2%	37.1%	37.0%	0.2%	3.1%	0.3%	100%
1988 Avg:	1.0%	NA	20.2%	32.3%	43.7%	0.0%	2.7%	0.2%	100%

¹ Single Family refers to customers that receive can garbage service

² Beginning Jan 1, 2002 household data based on new billing system (Banner).

TOTAL CITY MULTI FAMILY TONNAGE DATA ¹												Sign-Up Data				
Yr	Mo	FERROUS			MIXED	NEWS	CONTAMI			TOTAL	TOTAL	Bldgs	Units	Units/		Lbs/ Unit
		ALUM	METAL	GLASS	PAPER	PAPER	PLASTICS	TIN	NANTS	w/cont	w/o cont			Bldg	Lbs/ Bldg	
2008	1	8.4	10.0	358.3	861.3	559.6	41.0	14.0	49.2	1,901.7	1,852.5	5,287	114,455	21.6	700.8	32.4
2008	2	7.2	8.5	305.3	734.5	476.6	34.9	11.9	42.0	1,620.8	1,578.8	5,288	114,722	21.7	597.1	27.5
2008	3	7.0	8.3	299.6	721.0	467.5	34.3	11.7	41.2	1,590.5	1,549.3	5,289	114,900	21.7	585.8	27.0
2008	4	7.5	8.8	318.2	765.3	496.6	36.4	12.4	43.7	1,688.9	1,645.2	5,292	115,485	21.8	621.8	28.5
2008	5	7.5	8.8	319.8	769.5	498.8	36.6	12.5	43.9	1,697.4	1,653.5	5,299	115,800	21.9	624.1	28.6
2008	6	7.3	8.6	310.3	746.2	484.3	35.5	12.1	42.6	1,647.0	1,604.3	5,302	115,865	21.9	605.2	27.7
2008	7	8.2	9.6	349.8	842.0	545.5	40.0	13.6	48.1	1,856.8	1,808.7	5,299	115,791	21.9	682.7	31.2
2008	8	7.5	8.9	320.7	771.7	500.5	36.7	12.5	44.1	1,702.5	1,658.4	5,299	116,055	21.9	625.9	28.6
2008	9	7.6	8.9	323.7	779.1	504.9	37.0	12.6	44.5	1,718.4	1,673.9	5,305	116,147	21.9	631.1	28.8
2008	10	7.9	9.4	337.4	811.4	526.8	38.6	13.2	46.4	1,791.0	1,744.6	5,308	116,564	22.0	657.3	29.9
2008	11	7.4	8.7	317.0	763.2	494.3	36.3	12.4	43.6	1,682.7	1,639.1	5,311	117,297	22.1	617.3	27.9
2008	12	6.9	7.9	294.6	710.3	458.9	33.7	11.5	40.5	1,564.3	1,523.8	5,311	117,511	22.1	573.8	25.9
2009	1	19.1	12.3	475.5	997.5	330.5	79.3	21.0	174.0	2,109.2	1,935.2	5,214	114,956	22.0	742.3	33.7
2009	2	12.9	8.3	320.0	671.3	222.4	53.4	14.2	117.1	1,419.4	1,302.3	5,220	115,221	22.1	499.0	22.6
2009	3	13.7	8.8	341.4	716.1	237.3	56.9	15.1	124.9	1,514.3	1,389.4	5,226	114,983	22.0	531.7	24.2
2009	4	12.1	7.8	301.9	633.3	209.8	50.3	13.4	110.5	1,339.1	1,228.6	5,234	114,746	21.9	469.5	21.4
2009	5	12.9	8.3	321.7	674.9	223.6	53.6	14.2	117.7	1,427.1	1,309.3	5,234	114,697	21.9	500.3	22.8
2009	6	14.2	9.1	353.8	742.3	246.0	59.0	15.7	129.5	1,569.7	1,440.2	5,236	114,812	21.9	550.1	25.1
2009	7	15.1	9.7	375.3	787.3	260.9	62.6	16.6	137.3	1,664.8	1,527.4	5,245	115,645	22.0	582.4	26.4
2009	8	13.9	8.9	346.1	726.0	240.6	57.7	15.3	126.6	1,535.2	1,408.5	5,242	115,699	22.1	537.4	24.3
2009	9	14.5	9.3	359.5	754.3	249.9	60.0	15.9	131.6	1,594.9	1,463.3	5,248	116,659	22.2	557.7	25.1
2009	10	14.9	9.6	371.1	778.6	258.0	61.9	16.4	135.8	1,646.4	1,510.6	5,241	116,949	22.3	576.5	25.8
2009	11	15.8	10.1	392.2	822.9	272.7	65.4	17.4	143.5	1,740.0	1,596.4	5,241	117,431	22.4	609.2	27.2
2009	12	16.7	10.7	414.3	869.1	288.0	69.1	18.3	151.6	1,837.8	1,686.2	5,238	117,388	22.4	643.8	28.7
2009 MF Total:		175.9	112.8	4,372.7	9,173.7	3,039.8	729.2	193.5	1,600.2	19,397.8	17,797.6			2009 Avg:	566.7	25.6
2008 MF Total:		90.4	106.2	3,854.6	9,275.5	6,014.2	441.0	150.3	529.8	20,461.9	21,951.6			2008 Avg:	626.9	28.7
2007 MF Total:		93.0	109.4	3,964.5	9,539.0	6,186.5	453.6	154.6	544.9	21,045.5	20,500.6			2007 Avg:	647.0	30.2
2006 MF Total:		87.1	104.2	3,705.6	8,902.9	5,790.8	424.1	144.6	509.2	19,668.4	19,159.2			2006 Avg:	605.8	28.8
2005 MF Total:		79.8	94.5	3,400.4	8,177.0	5,309.0	389.1	132.6	467.3	18,049.7	17,582.4			2005 Avg:	582.3	27.6
2004 MF Total:		82.3	30.7	2,690.8	6,638.0	5,556.4	259.6	128.3	464.2	15,850.3	15,386.0			2004 Avg:	554.1	26.3
2003 MF Total:		76.8	28.6	2,509.7	6,190.4	5,180.8	242.0	119.6	432.9	14,780.8	14,347.9			2003 Avg:	532.6	25.6
2002 MF Total:		71.5	26.6	2,331.1	5,754.6	4,822.7	225.3	111.4	402.5	13,745.6	13,343.1			2002 Avg:	509.3	24.5
2001 MF Total:		70.0	26.0	2,282.6	5,636.3	4,725.9	220.7	109.2	394.2	13,465.0	13,070.8			2001 Avg:	550.7	25.9
2000 MF Total:		65.0	17.8	2,050.6	5,269.2	4,004.9	179.9	103.5	292.2	11,983.2	11,691.0			2000 Avg: ³	497.0	25.0
1999 MF Total:		68.6	NA	1,908.6	5,647.9	2,763.6	87.3	66.4	111.9	10,654.3	10,542.4			1999 Avg:	654.7	27.6
1998 MF Total:		70.2	NA	1,835.2	5,020.4	2,978.4	99.6	106.1	129.0	10,238.8	10,109.8			1998 Avg:	669.2	28.1
1997 MF Total:		68.9	NA	1,646.4	4,686.3	2,521.9	87.3	114.5	89.5	9,214.8	9,125.3			1997 Avg:	639.2	26.8
1996 MF Total:		69.9	NA	1,527.3	3,296.6	3,041.2	78.7	113.3	61.8	8,188.7	8,126.9			1996 Avg:	613.5	24.8
1995 MF Total:		49.6	NA	1,458.3	2,555.7	2,995.5	13.5	120.0	NA	7,192.4	7,192.4			1995 Avg:	608.2	22.9
1994 MF Total:		51.3	NA	1,224.6	3,013.2	1,678.1	0.8	111.0	NA	6,079.0	6,079.0			1994 Avg:	657.8	23.6
1993 MF Total:		47.0	NA	769.5	2,517.4	435.6	0.3	85.9	NA	3,855.7	3,855.7			1993 Avg:	646.0	20.2
1992 MF Total:		3.3	NA	736.2	1,438.5	726.7	NA	68.7	NA	2,973.4	2,973.4			1992 Avg:	753.3	24.4
1991 MF Total:		0.9	NA	410.6	661.7	732.7	NA	23.6	NA	1,829.5	1,829.5			1991 Avg:	733.5	23.4
1990 MF Total:		NA	NA	228.7	500.8	358.4	NA	6.3	NA	1,094.2	1,094.2			1990 Avg:	712.1	22.8
1989 MF Total:		NA	NA	69.9	42.7	192.8	NA	NA	NA	305.4	305.4			1989 Avg: NA	NA	NA

TOTAL CITY MULTI FAMILY PERCENTAGE BREAKDOWN BY MATERIAL										
Yr	Mo	FERROUS			MIXED	NEWS	CONTAMI			TOTAL
		ALUM	METAL	GLASS	PAPER	PAPER	PLASTIC	TIN	NANTS	
2009 Avg:		0.9%	0.6%	22.5%	47.3%	15.7%	3.8%	1.0%	8.2%	100%
2005-2008 Avg:		0.4%	0.5%	18.8%	45.3%	29.4%	2.2%	0.7%	2.6%	100%
2001-2004 Avg:		0.5%	0.2%	17.0%	41.9%	35.1%	1.6%	0.8%	2.9%	100%
2000 Avg:		0.5%	0.1%	17.1%	44.0%	33.4%	1.5%	0.9%	2.4%	100%
1999 Avg:		0.6%	NA	17.9%	53.0%	25.9%	0.8%	0.6%	1.1%	100%
1998 Avg:		0.7%	NA	17.9%	49.0%	29.1%	1.0%	1.0%	1.3%	100%
1997 Avg:		0.7%	NA	17.9%	50.9%	27.4%	0.9%	1.2%	1.0%	100%
1996 Avg:		0.9%	NA	18.7%	40.3%	37.1%	1.0%	1.4%	0.8%	100%
1995 Avg:		0.7%	NA	20.3%	35.5%	41.6%	0.2%	1.7%	NA	100%
1994 Avg:		0.8%	NA	20.1%	49.6%	27.6%	0.0%	1.8%	NA	100%
1993 Avg:		1.2%	NA	20.0%	65.3%	11.3%	0.0%	2.2%	NA	100%
1992 Avg:		NA	NA	24.8%	48.4%	24.4%	NA	2.3%	NA	100%
1991 Avg:		NA	NA	22.4%	36.2%	40.0%	NA	1.3%	NA	100%
1990 Avg:		NA	NA	20.9%	45.8%	32.8%	NA	0.6%	NA	100%
1989 Avg:		NA	NA	22.9%	14.0%	63.1%	NA	0.0%	NA	100%

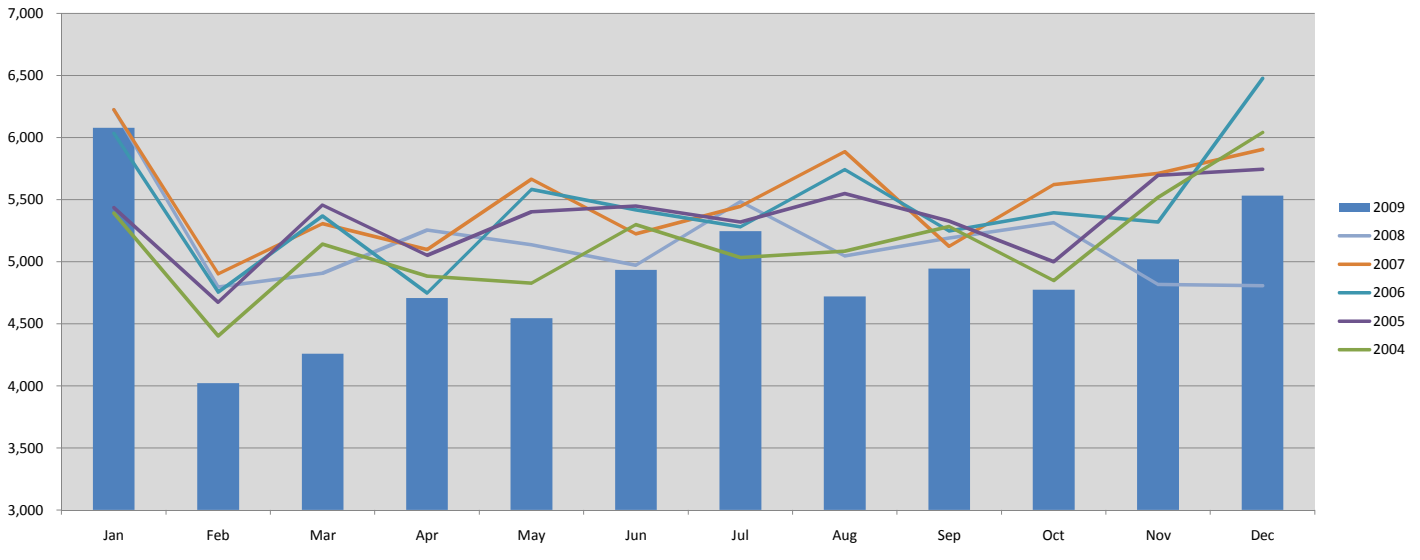
¹ Includes apts. with dumpster recycle only. Tons collected for apts. with curb recycle (cans) are reflected in the Single Family Tons
Multi Family refers to customers that receive dumpster garbage service

² New materials (polycoated paper, aseptic packaging and additional plastics) added to program effective April 2000.

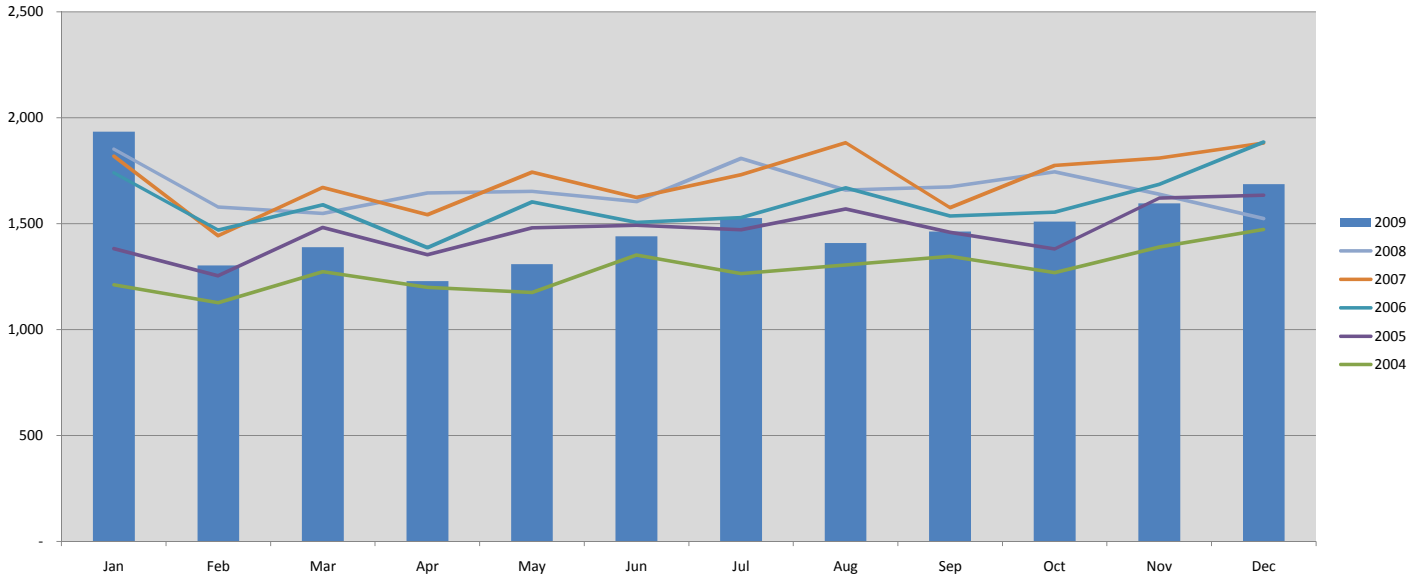
³ Subscription data inaccurate due to transfer of accounts during change in contractors Jan 2000

TOTAL CITY RESIDENTIAL TONNAGE DATA												COMMERCIAL	SPECIAL ITEMS		
Yr	Mo	FERROUS		MIXED	NEWS	CONTAMI			TOTAL	TOTAL	SMALL BUSINESS	MOTOR	ELEC-	APPLIANCES	
		ALUM	METAL	GLASS	PAPER	PAPER	PLASTICS	TIN	NANTS	w/cont	w/o cont	COMINGLED	OIL (Gallons)	TRONICS (units)	(units)
2008	1	41.6	25.2	1,500.2	3,532.1	2,716.9	193.6	66.8	176.7	8,253.1	8,076.4				
2008	2	32.7	20.1	1,184.9	2,794.0	2,139.5	152.5	52.6	140.4	6,516.6	6,376.2				
2008	3	33.2	20.2	1,200.2	2,827.5	2,168.9	154.6	53.3	141.7	6,599.7	6,458.0				
2008	4	35.4	21.6	1,281.5	3,021.5	2,318.1	165.2	56.9	151.6	7,051.9	6,900.3				
2008	5	34.9	21.3	1,262.2	2,974.8	2,279.8	162.5	56.1	149.3	6,940.8	6,791.6				
2008	6	33.8	20.7	1,222.3	2,879.9	2,207.6	157.4	54.3	144.5	6,720.6	6,576.0				
2008	7	37.4	23.0	1,356.0	3,196.1	2,446.8	174.5	60.2	160.5	7,454.4	7,293.9				
2008	8	34.4	21.1	1,246.6	2,938.0	2,250.0	160.4	55.3	147.5	6,853.5	6,706.0				
2008	9	35.2	21.5	1,275.7	3,007.3	2,304.3	164.3	56.7	150.9	7,015.9	6,865.0				
2008	10	36.3	22.3	1,312.5	3,091.8	2,368.8	168.9	58.3	155.2	7,214.1	7,058.9				
2008	11	33.1	20.4	1,200.6	2,830.0	2,163.7	154.3	53.2	142.2	6,597.5	6,455.3				
2008	12	32.3	19.6	1,173.7	2,776.9	2,125.1	151.4	52.0	139.6	6,470.5	6,330.9				
2009	1	95.1	52.2	1,770.9	4,052.8	1,552.1	383.6	106.6	581.6	8,595.1	8,013.4				
2009	2	63.1	34.7	1,177.3	2,693.2	1,030.9	254.8	70.8	386.9	5,711.6	5,324.8				
2009	3	67.0	36.8	1,248.8	2,856.4	1,093.0	270.1	75.1	410.5	6,057.6	5,647.1	18.5			
2009	4	71.0	38.7	1,305.1	2,999.3	1,155.8	286.0	79.6	426.1	6,361.6	5,935.5	858.4	21	59	
2009	5	69.8	38.2	1,290.7	2,960.2	1,137.3	281.3	78.3	422.6	6,278.3	5,855.7	846.4	19	64	
2009	6	75.9	41.5	1,405.4	3,222.4	1,237.6	306.1	85.1	460.4	6,834.3	6,374.0	323.7	24	71	
2009	7	80.7	44.1	1,493.5	3,424.7	1,315.3	325.3	90.5	489.2	7,263.4	6,774.2	337.9	25	48	
2009	8	72.9	39.9	1,352.3	3,099.2	1,189.4	294.1	81.8	443.3	6,572.9	6,129.7	356.9	23	41	
2009	9	76.3	41.7	1,413.3	3,239.4	1,243.6	307.5	85.5	463.1	6,870.4	6,407.3	315.6	7	38	
2009	10	74.6	40.9	1,389.0	3,179.1	1,217.8	301.0	83.7	456.1	6,742.2	6,286.1	331.8	545	10	39
2009	11	78.5	43.1	1,462.1	3,346.2	1,281.6	316.8	88.0	480.2	7,096.5	6,616.4	238.0	441	13	30
2009	12	85.8	47.0	1,593.6	3,650.6	1,400.1	346.2	96.3	522.7	7,742.2	7,219.5	320.6	146	14	27
2009 Total:		910.7	498.9	16,902.0	38,723.5	14,854.4	3,672.8	1,021.3	5,542.7	82,126.2	76,583.6	3,947.9	1,132	156	417
2008 Total:		420.3	257.1	15,216.3	35,869.8	27,489.6	1,959.6	675.8	1,800.2	83,688.6	83,907.9				
2007 Total:		445.6	270.7	16,097.0	37,911.7	29,105.5	2,074.7	716.0	1,899.1	88,520.3	86,621.1				
2006 Total:		435.8	263.7	15,702.5	36,951.7	28,450.2	2,027.0	699.8	1,847.6	86,378.3	84,530.7				
2005 Total:		422.2	251.1	15,170.3	35,673.3	27,528.5	1,961.3	677.6	1,778.5	83,462.8	81,684.3				
2004 Total:		496.4	119.2	13,620.3	32,855.6	27,488.5	1,712.4	853.7	3,006.4	80,152.4	77,146.0				
2003 Total:		476.8	114.2	13,069.8	31,523.3	26,373.1	1,645.9	820.5	2,889.7	76,913.3	74,023.7				
2002 Total:		469.9	111.2	12,849.3	30,971.4	25,915.2	1,622.7	809.4	2,843.0	75,592.1	72,749.2				
2001 Total:		467.5	110.2	12,775.9	30,785.6	25,760.6	1,614.5	805.5	2,825.7	75,145.4	72,319.7				
2000 Total:		555.2	103.3	14,013.8	30,255.8	26,504.6	1,622.0	851.3	2,724.4	76,393.1	73,906.0				
1999 Total:		868.2	78.2	14,877.8	28,518.0	26,710.9	814.5	1,506.3	1,138.7	74,516.3	73,377.6				
1998 Total:		833.0	75.9	14,223.1	26,898.0	25,847.3	794.2	1,475.8	1,122.3	71,271.5	70,149.2				
1997 Total:		809.9	71.0	13,675.5	25,920.0	24,729.9	761.8	1,446.3	1,050.1	68,469.3	67,419.2				
1996 Total:		763.0	72.5	12,776.7	23,152.0	23,810.2	709.5	1,359.1	959.3	63,600.7	62,641.4				
1995 Total:		757.3	71.3	12,949.0	22,844.4	24,208.9	657.8	1,391.3	919.6	63,800.8	62,881.2				
1994 Total:		747.6	66.9	12,532.0	22,980.7	22,552.7	634.9	1,361.5	905.9	61,786.7	60,880.8				
1993 Total:		699.8	NA	11,376.3	21,259.5	20,014.8	557.8	1,257.0	854.4	56,123.7	55,232.1				
1992 Total:		866.1	NA	11,438.2	19,049.1	18,139.6	288.8	1,478.6	1,259.6	52,520.0	51,260.4				
1991 Total:		685.5	NA	9,951.0	20,199.5	16,835.9	268.3	1,447.3	1,004.4	50,392.0	49,387.5				
1990 Total:		895.1	NA	9,325.6	17,702.6	17,731.4	163.1	1,313.1	685.9	47,816.8	47,130.9				
1989 Total:		433.2	NA	8,741.3	15,192.3	15,308.4	88.9	1,279.9	121.0	41,165.0	41,044.0				
1988 Total:		242.3	NA	4,833.6	7,739.7	10,481.4	NA	649.2	39.4	23,985.6	23,946.2				

Monthly Curbside (Can) Recycling Tons



Monthly Apartment (Dumpster) Recycling Tons



Total Residential Recycling Tons

