

CURBSIDE RECYCLING REPORT

December 2005

Seattle Public Utilities, Resource Planning Division, Forecasting & Evaluation Section
Report Date: February 7, 2005

Phone: (206) 684-4143

TONNAGE BREAKDOWN

North End Tons (Without Contaminants)

North End in December 2005:	2,762 Tons	8.6% decrease from 2004
Cumulative North End:	30,645 Tons	1.4% increase from 2004

South End Tons (Without Contaminants)

South End in December 2005:	2,868 Tons	5.0% decrease from 2004
Cumulative South End:	32,180 Tons	2.1% increase from 2004

Citywide Tons (Without Contaminants)

Citywide in December 2005:	5,630 Tons	6.8% decrease from 2004
Cumulative Citywide:	62,825 Tons	1.7% increase from 2004

Selected Statistics for January – December 2005

Average Pounds Per Eligible Household Per Month¹

North End:	72.4	(70,806 eligible households)
South End:	68.0	(79,101 eligible households)
Citywide:	70.1	(149,907 eligible households)

Service Citywide:

All materials are collected every other week on the same day as garbage collection service. Residents are provided 60 or 90 gallon carts for mixed recyclables and a 10 gallon bin for glass.

Materials Citywide²:

Newspaper, Mixed Paper³, Glass, Aluminum, Tin, PET & HDPE⁴ Bottles, Ferrous Metals, Plastic Bags (grocery bags), Plastic Containers (dairy/yogurt containers), milk cartons and juice boxes. Beginning January 2005, for all materials except plastics, there is a recycling requirement. Beginning January 2006, the recycling requirement is being enforced by not collecting garbage cans which contain more than 10% recyclables.

¹ Beginning Jan 2002, eligible household data based on new billing system (Banner).

² Effective April 1, 2000, the new contracts allow residents to combine all their recyclable materials - except glass – in one container. More kinds of materials can be recycled, including milk cartons, juice boxes, plastic bags, and plastic dairy and yogurt containers. Residents have one collection day per week for garbage, recycling and yard waste. Garbage is collected weekly. Recycling and yardwaste are collected on the same day on alternating weeks—recycling one week, yard waste the next week.

³ Overall, approximately 12% of the mixed paper is cardboard (OCC) based on 2000/2001 sampling data.

⁴ HDPE Bottles were added in April 1992. The overall breakdown between HDPE and PET is 51% and 49% respectively based on 2000/2001 sampling data.

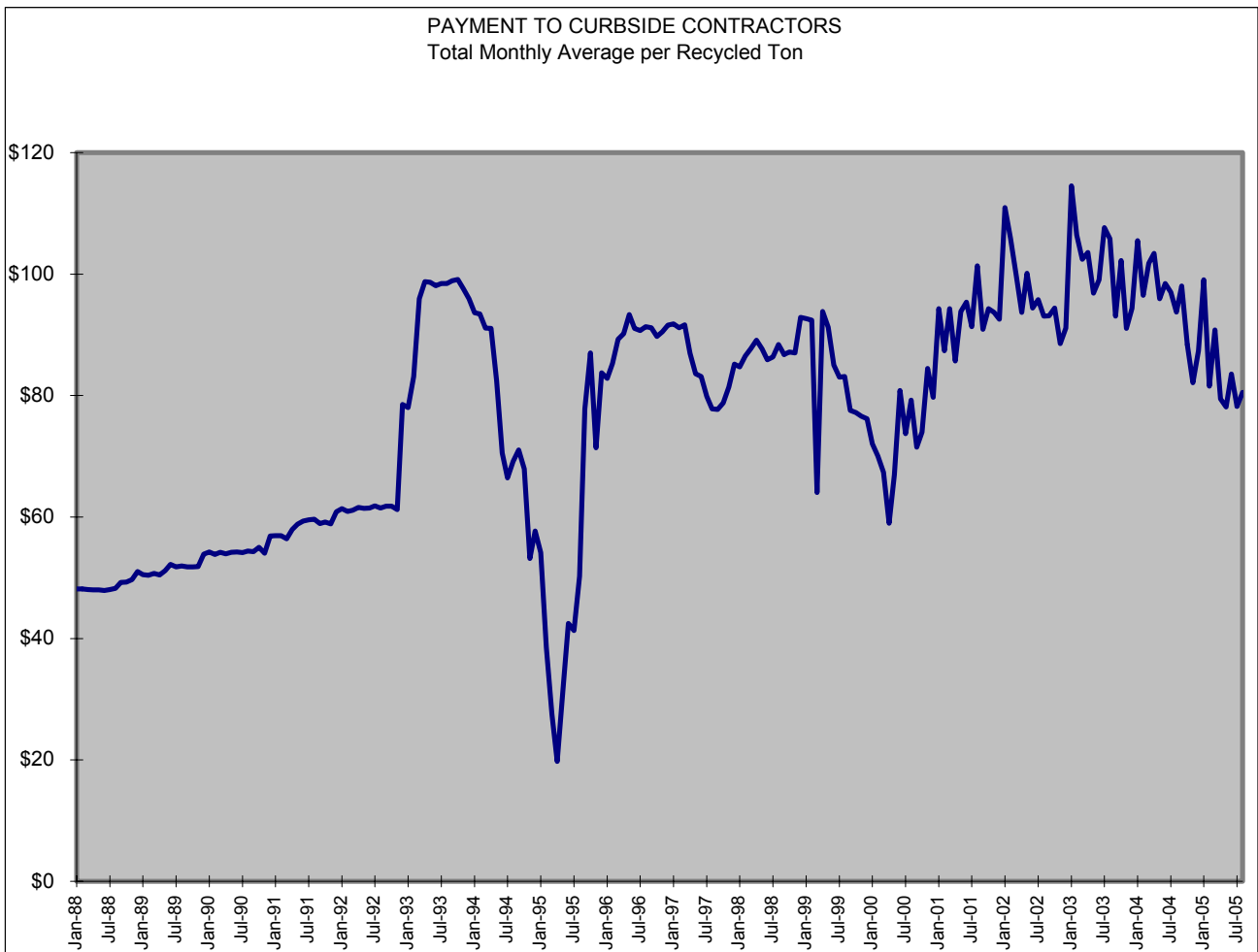
Program Costs⁵

Citywide Yearly Cumulative Average Cost/Ton

1988	\$ 48.55	1995	\$ 50.27	2002	\$ 96.46
1989	\$ 51.33	1996	\$ 89.15	2003	\$100.62
1990	\$ 54.20	1997	\$ 84.59	2004	\$ 95.82
1991	\$ 58.28	1998	\$ 86.88	2005	\$ 81.72
1992	\$ 61.41	1999	\$ 86.39		
1993	\$ 93.25	2000 ⁶	\$ 72.78		
1994	\$ 77.38	2001	\$ 91.64		

Avg. Cost in December 2005: \$70.58

(Payment to contractors falls when market prices for recyclable materials increase.)



⁵ Figures shown reflect the average amount SPU pays the recycling contractors, which is a total contract price plus (or minus) a variable amount determined by market prices. In other words, the figures reflect the cost to the city of collection and sorting (including payment for disposal of contaminants). Revenue received for sale of the materials belongs to the contractor and as such these cost figures should not be construed as the total net cost of recycling; figures also do not include costs such as liquidated damages and SPU program administration.

⁶ As of April 2000 recycling program costs include both curbside (single family) and apartment (multi-family) programs. Prior to April 2000, the costs shown are only for the curbside program.

CURBSIDE RECYCLING PROGRAM

NORTH END TONNAGE DATA

Yr	Mo	FERROUS		GLASS	MIXED PAPER	NEWS-PAPER	PLASTIC (PET/HDPE)		TIN	CONTAM- INANTS	TOTAL w/cont	TOTAL w/o cont	SET OUTS	ELIGIBLE HOUSEHOLDS ²	POUNDS PER HOUSEHOLD	POUNDS PER SET OUT
		ALUM	METAL				(PET/HDPE)	TIN								
2004	1	18.2	1.3	487.8	1,090.9	899.2	60.9	31.8	80.1	2,670.1	2,590.0	NA	69,734	74.3	NA	
2004	2	15.2	1.1	409.1	914.9	754.1	51.1	26.6	67.2	2,239.3	2,172.1	NA	69,825	62.2	NA	
2004	3	17.6	1.3	473.6	1,059.3	873.1	59.1	30.8	77.8	2,592.7	2,514.9	NA	69,865	72.0	NA	
2004	4	16.8	1.2	450.3	1,007.0	830.1	56.2	29.3	73.9	2,464.9	2,390.9	NA	69,943	68.4	NA	
2004	5	16.6	1.2	444.8	994.8	820.0	55.5	29.0	73.0	2,434.9	2,361.8	NA	70,013	67.5	NA	
2004	6	18.3	1.3	490.3	1,096.6	903.9	61.2	31.9	80.5	2,684.2	2,603.6	NA	70,079	74.3	NA	
2004	7	17.0	1.2	456.4	1,020.8	841.4	57.0	29.7	74.9	2,498.5	2,423.5	NA	70,112	69.1	NA	
2004	8	17.5	1.3	470.5	1,052.2	867.3	58.7	30.6	77.3	2,575.5	2,498.2	NA	70,208	71.2	NA	
2004	9	18.2	1.3	487.8	1,091.0	899.3	60.9	31.8	80.1	2,670.4	2,590.3	NA	70,227	73.8	NA	
2004	10	16.6	1.2	445.4	996.1	821.1	55.6	29.0	73.1	2,438.1	2,365.0	NA	70,228	67.4	NA	
2004	11	18.9	1.4	507.9	1,135.8	936.2	63.4	33.1	83.4	2,780.1	2,696.7	NA	70,208	76.8	NA	
2004	12	21.2	1.6	569.2	1,273.0	1,049.3	71.0	37.1	93.5	3,115.9	3,022.4	NA	70,194	86.1	NA	
2005	1	18.4	1.3	493.1	1,102.9	909.1	61.5	32.1	81.0	2,699.4	2,618.4	NA	70,194	74.6	NA	
2005	2	15.7	1.2	421.0	941.6	776.2	52.5	27.4	69.1	2,304.7	2,235.6	NA	70,251	63.6	NA	
2005	3	18.3	1.3	492.9	1,102.2	908.6	61.5	32.1	80.9	2,697.9	2,617.0	NA	70,306	74.4	NA	
2005	4	17.0	1.3	456.9	1,021.7	842.2	57.0	29.8	75.0	2,500.8	2,425.8	NA	70,377	68.9	NA	
2005	5	18.1	1.3	485.9	1,086.7	895.7	60.6	31.6	79.8	2,659.8	2,580.0	NA	70,481	73.2	NA	
2005	6	18.3	1.3	490.3	1,096.6	903.9	61.2	31.9	80.5	2,684.1	2,603.6	NA	70,573	73.8	NA	
2005	7	17.9	1.3	481.6	1,077.0	887.8	60.1	31.4	79.1	2,636.2	2,557.1	NA	70,636	72.4	NA	
2005	8	18.3	1.3	491.0	1,098.1	905.1	61.3	32.0	80.6	2,687.7	2,607.1	NA	70,739	73.7	NA	
2005	9	18.0	1.3	482.8	1,079.8	890.1	60.3	31.4	79.3	2,643.0	2,563.8	NA	70,792	72.4	NA	
2005	10	16.7	1.2	449.3	1,004.9	828.3	56.1	29.3	73.8	2,459.6	2,385.8	NA	70,777	67.4	NA	
2005	11	18.8	1.4	506.4	1,132.5	933.5	63.2	33.0	83.1	2,771.9	2,688.7	NA	70,773	76.0	NA	
2005	12	19.4	1.4	520.2	1,163.4	959.0	64.9	33.9	85.4	2,847.6	2,762.1	NA	70,806	78.0	NA	

2005 Total:	214.8	15.8	5,771.4	12,907.5	10,639.4	720.2	375.9	947.7	31,592.7	30,645.1	2005 Avg:	72.4	NA
2004 Total:	211.9	15.6	5,693.2	12,732.5	10,495.1	710.5	370.8	934.8	31,164.4	30,229.6	2004 Avg:	71.9	NA
2003 Total:	204.6	15.0	5,497.4	12,294.6	10,134.1	686.0	358.1	902.7	30,092.5	29,189.8	2003 Avg:	69.9	NA
2002 Total:	205.5	15.1	5,521.2	12,347.9	10,178.1	689.0	359.6	906.6	30,223.0	29,316.4	2002 Avg:	70.6	N/A
2001 Total:	205.9	15.1	5,530.9	12,369.5	10,195.9	690.2	360.2	908.2	30,276.0	29,367.8	2001 Avg:	70.1	N/A
2000 Total:	268.8	20.8	6,424.5	12,321.4	11,151.9	717.5	351.6	992.7	32,012.0	31,256.5	2000 Avg:	74.6	N/A
1999 Total:	476.2	45.9	7,329.5	12,126.4	13,657.2	412.7	952.3	271.6	35,271.7	35,000.1	1999 Avg:	83.6	21.9
1998 Total:	446.4	43.0	6,871.3	11,368.4	12,803.5	386.9	892.8	254.6	33,066.8	32,812.2	1998 Avg:	78.3	22.3
1997 Total:	436.1	42.0	6,712.9	11,106.3	12,508.3	378.0	872.2	248.7	32,304.4	32,055.7	1997 Avg:	76.5	23.0
1996 Total:	408.4	39.3	6,286.3	10,400.6	11,713.5	353.9	816.8	232.9	30,251.8	30,018.9	1996 Avg:	71.7	23.1
1995 Total:	415.2	40.0	6,391.7	10,574.9	11,909.9	359.9	830.5	236.8	30,759.0	30,522.1	1995 Avg:	72.9	24.2
1994 Total:	408.0	39.3	6,279.8	10,389.8	11,701.3	353.6	815.9	232.7	30,220.4	29,987.7	1994 Avg:	71.6	24.7
1993 Total:	379.6	36.6	5,843.1	9,667.2	10,887.6	329.0	759.2	216.5	28,118.7	27,902.2	1993 Avg:	66.4	23.5
1992 Total:	575.2	NA	6,595.5	9,289.1	7,915.0	182.7	917.2	498.2	25,972.9	25,474.7	1992 Avg:	60.7	23.1
1991 Total:	410.6	NA	5,961.3	11,116.4	6,540.8	157.9	1,004.0	252.5	25,443.5	25,191.0	1991 Avg:	60.0	24.1
1990 Total:	658.5	NA	4,874.2	9,687.8	9,057.2	64.1	745.4	115.8	25,203.0	25,087.2	1990 Avg:	59.9	26.6
1989 Total:	320.1	NA	5,296.5	9,118.7	7,524.8	13.3	678.0	31.0	22,982.4	22,951.4	1989 Avg:	58.9	25.8
1988 Total:	159.4	NA	3,574.5	5,186.7	5,411.5	0.0	392.2	39.4	14,763.7	14,724.3	1988 Avg:	41.2	29.2

NORTH END PERCENTAGE BREAKDOWN BY MATERIAL

YEAR	ALUM	FERROUS METAL	GLASS	MIXED PAPER	NEWS-PAPER	PLASTIC (PET/HDPE)	TIN	CONTAM- INANTS	TOTAL w/cont
2004 Avg:	0.68%	0.05%	18.27%	40.86%	33.68%	2.28%	1.19%	3.00%	100%
2003 Avg:	0.68%	0.05%	18.27%	40.86%	33.68%	2.28%	1.19%	3.00%	100%
2002 Avg:	0.68%	0.05%	18.27%	40.86%	33.68%	2.28%	1.19%	3.00%	100%
2001 Avg:	0.68%	0.05%	18.27%	40.86%	33.68%	2.28%	1.19%	3.00%	100%
2000 Avg:	0.84%	0.06%	20.07%	38.49%	34.84%	2.24%	1.10%	3.10%	100%
1999 Avg:	1.35%	0.13%	20.78%	34.38%	38.72%	1.17%	2.70%	0.77%	100%
1998 Avg:	1.35%	0.13%	20.78%	34.38%	38.72%	1.17%	2.70%	0.77%	100%
1997 Avg:	1.35%	0.13%	20.78%	34.38%	38.72%	1.17%	2.70%	0.77%	100%
1996 Avg:	1.35%	0.13%	20.78%	34.38%	38.72%	1.17%	2.70%	0.77%	100%
1995 Avg:	1.35%	0.13%	20.78%	34.38%	38.72%	1.17%	2.70%	0.77%	100%
1994 Avg:	1.35%	0.13%	20.78%	34.38%	38.72%	1.17%	2.70%	0.77%	100%
1993 Avg:	1.35%	0.10%	20.80%	34.44%	38.70%	1.20%	2.70%	0.80%	100%
1992 Avg:	2.20%	NA	25.40%	35.80%	30.50%	0.70%	3.50%	1.90%	100%
1991 Avg:	1.60%	NA	23.70%	43.60%	25.40%	0.60%	4.00%	1.00%	100%
1990 Avg:	1.40%	NA	19.40%	39.00%	36.40%	0.30%	3.00%	0.50%	100%
1989 Avg:	1.40%	NA	23.00%	39.70%	32.70%	0.10%	3.00%	0.10%	100%
1988 Avg:	1.00%	NA	24.20%	35.10%	36.70%	0.00%	2.70%	0.30%	100%

CURBSIDE RECYCLING PROGRAM

SOUTH END TONNAGE DATA

Yr	Mo	FERROUS			MIXED PAPER	NEWS-PAPER	PLASTIC (PET/HDPE)		CONTAM-INANTS	TOTAL w/cont	TOTAL w/o cont	SET OUTS	ELIGIBLE HOUSEHOLDS ²	POUNDS PER HOUSEHOLD	POUNDS PER SET OUT
		ALUM	METAL	GLASS			TIN								
2004	1	18.0	6.5	465.5	1198.8	1016.7	66.0	31.5	142.9	2,945.8	2,802.9	NA	77,646	72.2	NA
2004	2	14.3	5.2	370.2	953.3	808.5	52.5	25.1	113.6	2,342.5	2,228.9	NA	77,693	57.4	NA
2004	3	16.8	6.1	436.3	1123.6	953.0	61.9	29.5	133.9	2,761.1	2,627.2	NA	77,809	67.5	NA
2004	4	16.0	5.8	414.1	1066.5	904.5	58.7	28.0	127.1	2,620.9	2,493.7	NA	77,906	64.0	NA
2004	5	15.8	5.7	409.6	1054.8	894.6	58.1	27.7	125.7	2,592.1	2,466.3	NA	77,990	63.2	NA
2004	6	17.3	6.2	447.8	1153.3	978.2	63.5	30.3	137.5	2,834.1	2,696.6	NA	78,076	69.1	NA
2004	7	16.7	6.0	433.7	1116.9	947.3	61.5	29.4	133.1	2,744.6	2,611.5	NA	78,118	66.9	NA
2004	8	16.6	6.0	429.7	1106.5	938.5	60.9	29.1	131.9	2,719.1	2,587.2	NA	78,252	66.1	NA
2004	9	17.3	6.2	447.4	1152.2	977.2	63.4	30.3	137.3	2,831.3	2,693.9	NA	78,287	68.8	NA
2004	10	15.9	5.7	412.2	1061.5	900.3	58.4	27.9	126.5	2,608.5	2,482.0	NA	78,289	63.4	NA
2004	11	18.1	6.5	468.6	1206.7	1023.4	66.4	31.7	143.8	2,965.3	2,821.4	NA	78,269	72.1	NA
2004	12	19.4	7.0	501.3	1291.0	1094.9	71.1	33.9	153.9	3,172.4	3,018.6	NA	78,297	77.1	NA
2005	1	17.4	6.3	450.1	1159.1	983.0	63.8	30.5	138.2	2,848.2	2,710.1	NA	78,378	69.2	NA
2005	2	15.0	5.4	389.4	1002.9	850.6	55.2	26.4	119.5	2,464.5	2,345.0	NA	78,534	59.7	NA
2005	3	17.5	6.3	453.4	1167.5	990.2	64.3	30.7	139.2	2,869.0	2,729.9	NA	78,563	69.5	NA
2005	4	16.2	5.8	419.2	1079.6	915.6	59.4	28.4	128.7	2,653.0	2,524.3	NA	78,682	64.2	NA
2005	5	17.4	6.3	450.8	1161.1	984.7	63.9	30.5	138.4	2,853.2	2,714.8	NA	78,795	68.9	NA
2005	6	17.5	6.3	454.5	1170.4	992.6	64.4	30.8	139.5	2,876.0	2,736.5	NA	78,905	69.4	NA
2005	7	17.0	6.1	441.1	1135.9	963.4	62.5	29.9	135.4	2,791.3	2,655.9	NA	78,983	67.3	NA
2005	8	18.1	6.5	470.1	1210.5	1026.7	66.6	31.8	144.3	2,974.7	2,830.4	NA	79,024	71.6	NA
2005	9	17.0	6.1	441.5	1136.9	964.2	62.6	29.9	135.5	2,793.7	2,658.2	NA	79,087	67.2	NA
2005	10	16.1	5.8	417.5	1075.2	911.9	59.2	28.3	128.2	2,642.1	2,513.9	NA	79,106	63.6	NA
2005	11	18.5	6.7	480.3	1237.0	1049.1	68.1	32.5	147.4	3,039.8	2,892.4	NA	79,142	73.1	NA
2005	12	18.4	6.6	476.3	1226.7	1040.4	67.5	32.3	146.2	3,014.5	2,868.2	NA	79,101	72.5	NA

2005 Total:	206.3	74.4	5344.1	13762.8	11672.5	757.6	361.9	1640.4	33820.1	32179.6		2005 Avg:	68.0	NA
2004 Total:	408.5	72.9	5,236.3	13,485.1	11,437.0	742.4	354.6	1,607.3	33,137.8	31,530.4		2004 Avg:	67.3	NA
2003 Total:	195.5	70.5	5,062.8	13,038.4	11,058.1	717.8	342.9	1,554.1	32,040.0	30,485.9		2003 Avg:	65.7	NA
2002 Total:	192.9	69.6	4,997.0	12,868.9	10,914.4	708.4	338.4	1,533.9	31,623.6	30,089.7		2002 Avg:	65.4	NA
2001 Total:	191.6	69.1	4,962.4	12,779.7	10,838.8	703.5	336.1	1,523.3	31,404.4	29,881.2		2001 Avg:	63.4	NA
2000 Total:	221.5	64.7	5,538.6	12,665.2	11,347.8	724.6	396.2	1,439.5	32,398.0	30,958.5		2000 Avg:	65.7	NA
1999 Total:	323.5	35.9	5,639.7	10,743.8	10,290.1	314.6	487.5	755.2	28,590.2	27,835.1		1999 Avg:	59.1	74.8
1998 Total:	316.4	35.2	5,516.6	10,509.2	10,065.4	307.7	476.9	738.7	27,965.9	27,227.2		1998 Avg:	57.8	71.8
1997 Total:	304.9	33.9	5,316.2	10,127.4	9,699.7	296.5	459.6	711.9	26,950.1	26,238.2		1997 Avg:	55.7	67.4
1996 Total:	284.7	31.6	4,963.1	9,454.8	9,055.5	276.8	429.1	664.6	25,160.2	24,495.6		1996 Avg:	52.0	63.2
1995 Total:	292.5	32.5	5,099.1	9,713.8	9,303.6	284.4	440.8	682.8	25,849.4	25,166.6		1995 Avg:	53.2	66.6
1994 Total:	288.4	32.0	5,027.6	9,577.7	9,173.3	280.4	434.6	673.2	25,487.3	24,814.1		1994 Avg:	52.7	67.5
1993 Total:	273.2	30.4	4,763.7	9,074.9	8,691.7	228.5	411.8	637.9	24,149.3	23,474.2		1993 Avg:	49.8	71.6
1992 Total:	287.6	NA	4,106.5	8,321.5	9,497.9	106.1	492.7	761.4	23,573.7	22,812.3		1992 Avg:	48.4	68.5
1991 Total:	274.0	NA	3,579.1	8,421.4	9,562.4	110.4	419.7	751.9	23,118.9	22,367.0		1991 Avg:	47.5	70.1
1990 Total:	236.6	NA	4,222.7	7,514.0	8,315.8	99.0	561.4	570.1	21,519.6	20,949.5		1990 Avg:	43.9	72.3
1989 Total:	113.1	NA	3,374.9	6,030.9	7,590.8	75.6	601.9	90.0	17,877.2	17,787.2		1989 Avg:	36.2	70.2
1988 Total:	82.9	NA	1,259.1	2,553.0	5,069.9	0.0	257.0	0.0	9,221.9	9,221.9		1988 Avg:	25.0	74.9

SOUTH END PERCENTAGE BREAKDOWN BY MATERIAL

YEAR	ALUM	FERROUS METAL	GLASS	MIXED PAPER	NEWS-PAPER	PLASTIC (PET/HDPE)	TIN	CONTAM-INANTS	TOTAL w/cont
2004 Avg:	1.23%	0.22%	15.80%	40.69%	34.51%	2.24%	1.07%	4.85%	100%
2003 Avg:	0.61%	0.22%	15.80%	40.69%	34.51%	2.24%	1.07%	4.85%	100%
2002 Avg:	0.61%	0.22%	15.80%	40.69%	34.51%	2.24%	1.07%	4.85%	100%
2001 Avg:	0.61%	0.22%	15.80%	40.69%	34.51%	2.24%	1.07%	4.85%	100%
2000 Avg:	0.68%	0.20%	17.10%	39.09%	35.03%	2.24%	1.22%	4.44%	100%
1999 Avg:	1.13%	0.13%	19.73%	37.58%	35.99%	1.10%	1.71%	2.64%	100%
1998 Avg:	1.13%	0.13%	19.73%	37.58%	35.99%	1.10%	1.71%	2.64%	100%
1997 Avg:	1.13%	0.13%	19.73%	37.58%	35.99%	1.10%	1.71%	2.64%	100%
1996 Avg:	1.13%	0.13%	19.73%	37.58%	35.99%	1.10%	1.71%	2.64%	100%
1995 Avg:	1.13%	0.13%	19.73%	37.58%	35.99%	1.10%	1.71%	2.64%	100%
1994 Avg:	1.13%	0.09%	19.73%	37.62%	36.03%	1.10%	1.71%	2.64%	100%
1993 Avg:	1.15%	0.10%	19.18%	37.08%	37.06%	0.95%	1.80%	2.79%	100%
1992 Avg:	1.20%	NA	17.40%	35.30%	40.30%	0.50%	2.10%	3.20%	100%
1991 Avg:	1.20%	NA	15.50%	36.40%	41.40%	0.50%	1.80%	3.30%	100%
1990 Avg:	1.10%	NA	19.60%	34.90%	38.60%	0.50%	2.60%	2.70%	100%
1989 Avg:	0.60%	NA	18.90%	33.70%	42.50%	0.40%	3.40%	0.50%	100%
1988 Avg:	0.90%	NA	13.70%	27.70%	55.00%	0.00%	2.80%	0.00%	100%

CURBSIDE RECYCLING PROGRAM

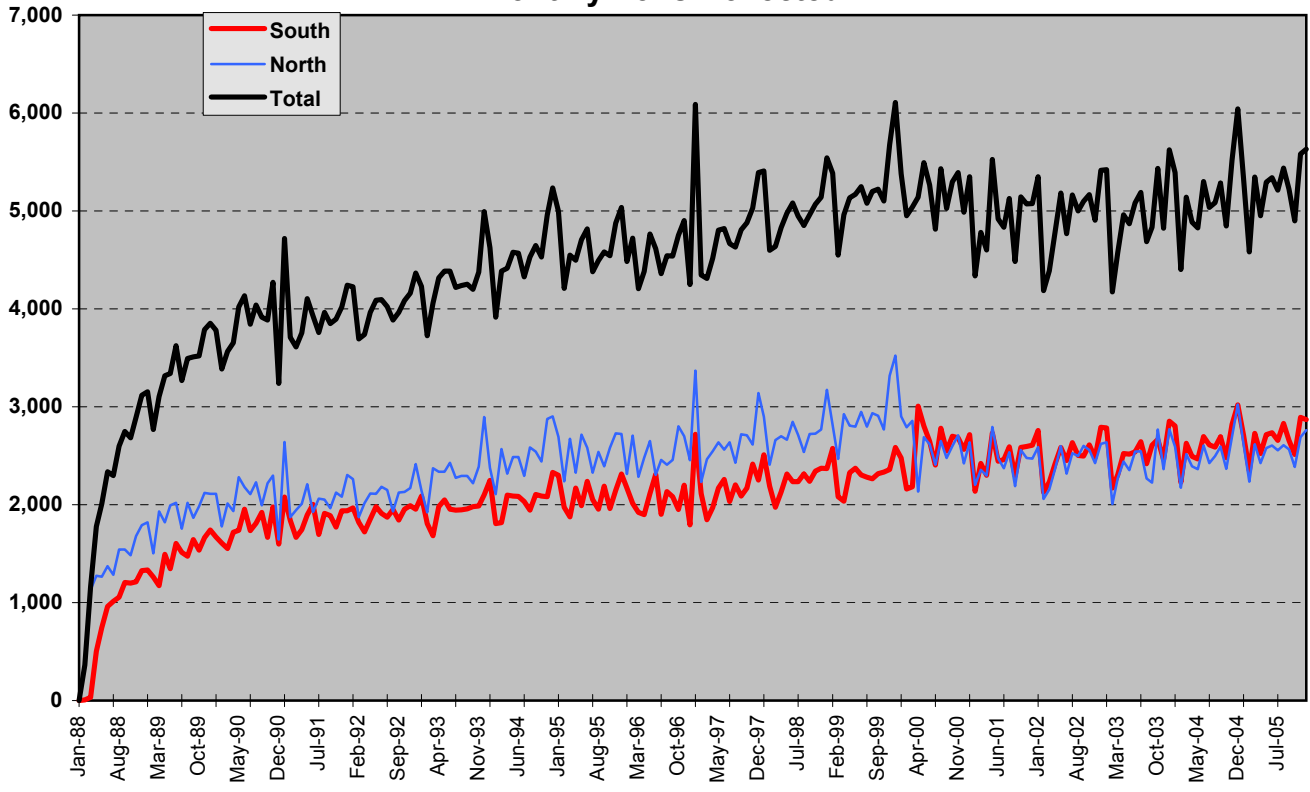
TOTAL CITY TONNAGE DATA														
Yr	Mo	FERROUS		GLASS	MIXED PAPER	NEWS-PAPER	PLASTIC (PET/HDPE)		CONTAM-INANTS	TOTAL w/cont	TOTAL w/o cont	SET OUTS	ELIGIBLE HOUSEHOLDS ²	POUNDS PER HOUSEHOLD
		ALUM	METAL				TIN							
2004	1	36.1	7.8	953.3	2,289.7	1,915.9	126.9	63.3	223.0	5,616.0	5,393.0	NA	147,380	73.2
2004	2	29.5	6.3	779.2	1,868.2	1,562.6	103.5	51.7	180.8	4,581.8	4,401.0	NA	147,518	59.7
2004	3	34.5	7.4	909.9	2,182.9	1,826.1	121.0	60.4	211.7	5,353.8	5,142.1	NA	147,674	69.6
2004	4	32.7	7.0	864.4	2,073.6	1,734.6	114.9	57.4	201.1	5,085.7	4,884.7	NA	147,849	66.1
2004	5	32.4	6.9	854.4	2,049.6	1,714.6	113.6	56.7	198.8	5,026.9	4,828.2	NA	148,003	65.2
2004	6	35.5	7.6	938.2	2,250.0	1,882.1	124.7	62.3	218.0	5,518.3	5,300.3	NA	148,155	71.6
2004	7	33.7	7.3	890.1	2,137.7	1,788.7	118.4	59.1	208.1	5,243.1	5,035.0	NA	148,230	67.9
2004	8	34.1	7.3	900.2	2,158.8	1,805.8	119.6	59.7	209.1	5,294.6	5,085.5	NA	148,460	68.5
2004	9	35.4	7.6	935.2	2,243.2	1,876.5	124.3	62.1	217.4	5,501.7	5,284.3	NA	148,514	71.2
2004	10	32.5	7.0	857.6	2,057.6	1,721.4	114.0	56.9	199.7	5,046.6	4,847.0	NA	148,517	65.3
2004	11	37.0	7.9	976.4	2,342.5	1,959.6	129.8	64.8	227.2	5,745.3	5,518.1	NA	148,477	74.3
2004	12	40.5	8.5	1,070.5	2,564.0	2,144.2	142.1	71.0	247.3	6,288.3	6,041.0	NA	148,491	81.4
2005	1	35.7	7.6	943.2	2,261.9	1,892.1	125.3	62.6	219.1	5,547.6	5,328.5	NA	148,572	71.7
2005	2	30.7	6.6	810.5	1,944.5	1,626.8	107.8	53.8	188.7	4,769.3	4,580.6	NA	148,785	61.6
2005	3	35.8	7.7	946.2	2,269.8	1,898.8	125.8	62.8	220.1	5,566.9	5,346.8	NA	148,869	71.8
2005	4	33.2	7.1	876.1	2,101.3	1,757.8	116.4	58.1	203.7	5,153.8	4,950.1	NA	149,059	66.4
2005	5	35.5	7.6	936.8	2,247.8	1,880.5	124.6	62.2	218.2	5,513.0	5,294.8	NA	149,276	70.9
2005	6	35.8	7.7	944.8	2,267.0	1,896.5	125.6	62.7	220.0	5,560.1	5,340.1	NA	149,478	71.5
2005	7	35.0	7.5	922.7	2,212.9	1,851.2	122.6	61.2	214.5	5,427.5	5,213.0	NA	149,619	69.7
2005	8	36.4	7.9	961.0	2,308.6	1,931.8	127.9	63.8	224.9	5,662.4	5,437.5	NA	149,763	72.6
2005	9	35.0	7.5	924.3	2,216.7	1,854.3	122.8	61.3	214.8	5,436.8	5,222.0	NA	149,879	69.7
2005	10	32.8	7.0	866.8	2,080.1	1,740.2	115.3	57.5	201.9	5,101.7	4,899.8	NA	149,883	65.4
2005	11	37.4	8.1	986.7	2,369.5	1,982.6	131.3	65.5	230.6	5,811.7	5,581.1	NA	149,915	74.5
2005	12	37.8	8.1	996.5	2,390.1	1,999.4	132.4	66.1	231.6	5,862.0	5,630.4	NA	149,907	75.1

2005 Total:	421.1	90.2	11,115.5	26,670.3	22,311.8	1,477.9	737.8	2,588.1	65,412.8	62,824.7		2005 Avg:	70.1
2004 Total:	414.1	88.5	10,929.5	26,217.6	21,932.1	1,452.8	725.4	2,542.2	64,302.2	61,760.0		2004 Avg:	69.5
2003 Total:	400.1	85.5	10,560.2	25,333.0	21,192.3	1,403.8	700.9	2,456.8	62,132.5	59,675.7		2003 Avg:	67.7
2002 Total:	398.4	84.7	10,518.2	25,216.8	21,092.5	1,397.5	698.0	2,440.5	61,846.6	59,406.1		2002 Avg:	67.9
2001 Total:	397.4	84.2	10,493.3	25,149.3	21,034.7	1,393.8	696.3	2,431.5	61,680.4	59,249.0		2001 Avg:	66.6
2000 Total:	490.2	85.5	11,963.1	24,986.6	22,499.7	1,442.1	747.8	2,432.2	64,410.0	62,215.0		2000 Avg:	69.9
1999 Total:	799.6	81.8	12,969.2	22,870.2	23,947.3	727.3	1,439.9	1,026.8	63,862.0	62,835.2		1999 Avg:	70.6
1998 Total:	762.8	78.2	12,387.9	21,877.6	22,868.9	694.6	1,369.7	993.3	61,032.7	60,039.4		1998 Avg:	67.5
1997 Total:	741.0	75.9	12,029.0	21,233.7	22,208.0	674.5	1,331.8	960.6	59,254.5	58,293.9		1997 Avg:	67.5
1996 Total:	693.1	71.0	11,249.4	19,855.4	20,769.0	630.8	1,245.9	897.5	55,412.0	54,514.5		1996 Avg:	61.3
1995 Total:	707.7	72.5	11,490.8	20,288.7	21,213.5	644.3	1,271.3	919.6	56,608.4	55,688.7		1995 Avg:	63.1
1994 Total:	696.3	71.3	11,307.4	19,967.5	20,874.6	634.0	1,250.6	905.9	55,707.7	54,801.8		1994 Avg:	61.6
1993 Total:	652.8	66.9	10,606.8	18,742.1	19,579.3	557.5	1,171.0	854.4	52,268.0	51,376.4		1993 Avg:	57.7
1992 Total:	862.8	NA	10,702.0	17,610.6	17,412.9	288.8	1,409.9	1,259.6	49,546.6	48,287.0		1992 Avg:	54.2
1991 Total:	684.6	NA	9,540.4	19,537.8	16,103.2	268.3	1,423.7	1,004.4	48,562.4	47,558.0		1991 Avg:	53.4
1990 Total:	895.1	NA	9,096.9	17,201.8	17,373.0	163.1	1,306.8	685.9	46,722.6	46,036.7		1990 Avg:	51.3
1989 Total:	433.2	NA	8,671.4	15,149.6	15,115.6	88.9	1,279.9	121.0	40,859.6	40,738.6		1989 Avg:	46.2
1988 Total:	242.3	NA	4,833.6	7,739.7	10,481.4	0.0	649.2	39.4	23,985.6	23,946.2		1988 Avg:	31.9

TOTAL CITY PERCENTAGE BREAKDOWN BY MATERIAL										
YEAR	ALUM	FERROUS METAL	GLASS	MIXED PAPER	NEWS-PAPER	PLASTIC (PET/HDPE)	TIN	CONTAM-INANTS	TOTAL w/cont	TOTAL w/o cont
2004 Avg:	0.64%	0.14%	17.00%	40.77%	34.11%	2.26%	1.13%	3.95%	100%	
2003 Avg:	0.64%	0.14%	17.00%	40.77%	34.11%	2.26%	1.13%	3.95%	100%	
2002 Avg:	0.64%	0.14%	17.01%	40.77%	34.10%	2.26%	1.13%	3.95%	100%	
2001 Avg:	0.64%	0.14%	17.01%	40.77%	34.10%	2.26%	1.13%	3.94%	100%	
2000 Avg ¹ :	0.76%	0.13%	18.57%	38.79%	34.93%	2.24%	1.16%	3.78%	100%	
1999 Avg:	1.25%	0.13%	20.31%	35.81%	37.50%	1.14%	2.25%	1.61%	100%	
1998 Avg:	1.25%	0.13%	20.30%	35.85%	37.47%	1.14%	2.24%	1.63%	100%	
1997 Avg:	1.25%	0.13%	20.30%	35.83%	37.48%	1.14%	2.25%	1.62%	100%	
1996 Avg:	1.25%	0.13%	20.30%	35.83%	37.48%	1.14%	2.25%	1.62%	100%	
1995 Avg:	1.25%	0.13%	20.30%	35.84%	37.47%	1.14%	2.25%	1.62%	100%	
1994 Avg:	1.25%	0.13%	20.30%	35.84%	37.47%	1.14%	2.24%	1.63%	100%	
1993 Avg:	1.25%	0.13%	20.29%	35.86%	37.46%	1.07%	2.24%	1.63%	100%	
1992 Avg:	1.74%	NA	21.60%	35.54%	35.14%	0.58%	2.85%	2.54%	100%	
1991 Avg:	1.41%	NA	19.65%	40.23%	33.16%	0.55%	2.93%	2.07%	100%	
1990 Avg:	1.92%	NA	19.47%	36.82%	37.18%	0.35%	2.80%	1.47%	100%	
1989 Avg:	1.06%	NA	21.22%	37.08%	36.99%	0.22%	3.13%	0.30%	100%	
1988 Avg:	1.01%	NA	20.15%	32.27%	43.70%	0.00%	2.71%	0.16%	100%	

1. November and December 2000 total tons collected were significantly lower than those same months in 1999. Part of the decline may be attributed to the newspaper strike which extended from November 21, 2000 - January 9, 2001
 2. Beginning Jan 1, 2002 household data based on new billing system (Banner).

CURBSIDE RECYCLING Monthly Tons Collected



CURBSIDE RECYCLING Cumulative Tons Collected 2005

