

# GARBAGE REPORT

December 2002

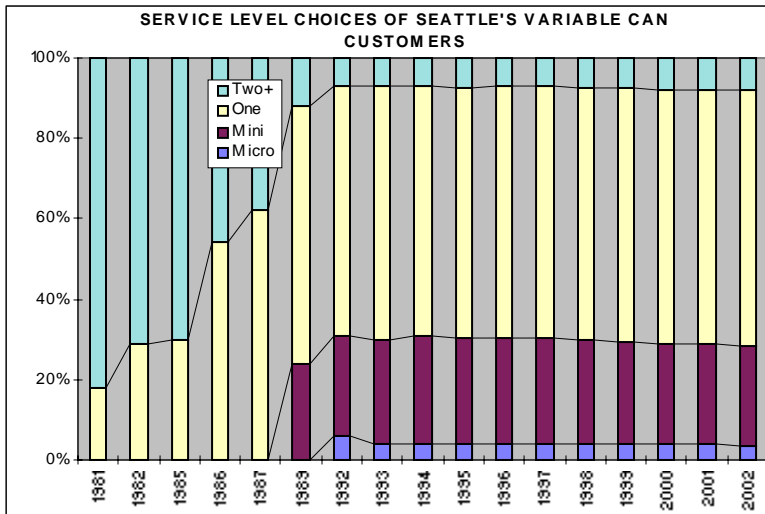
Seattle Public Utilities, Resource Planning Division, Forecasting & Evaluation Section

Report Date: February 12, 2003

Phone: (206) 684-4143

## Total City Tonnage Breakdown

Self Haul Cars <sup>1</sup> in December:	524 Tons	3.3% decrease vs. same period in '01
2002 Cumulative Self Haul Cars:	7,353 Tons	7.9% increase vs. same period in '01
Self Haul Trucks <sup>2</sup> in December:	6,743 Tons	6.2% increase vs. same period in '01
2002 Cumulative Self Haul Trucks:	95,537 Tons	0.1% increase vs. same period in '01
2002 Cumulative Self Haul Cars & Trucks:	102,891 Tons	0.6% increase vs. same period in '01
Residential Collection in December:	12,035 Tons	1.5% increase vs. same period in '01
2002 Cumulative Residential Collection:	142,910 Tons	1.1% decrease vs. same period in '01
Commercial Tons in December:	17,241 Tons	2.9% decrease vs. same period in '01
2002 Cumulative Commercial Tons:	217,618 Tons	5.4% decrease vs. same period in '01
Total Tons Disposed in December:	36,544 Tons	0.1% increase vs. same period in '01
2002 Cumulative Total Tons Disposed:	463,419 Tons	3.1% decrease vs. same period in '01



## Monthly Variable Can Rates:

Micro (12 gal)	\$10.05
Mini (19 gal)	\$12.35
One Can (32 gal)	\$16.10
Two Cans (64 gal)	\$32.15
Each Add'l Can	\$16.10

## Residential Dumpster Service<sup>3</sup>

Most Common Monthly Rate

\$82.50 (+ \$.60 per unit)

## Selected Statistics for Residential Collection Service

Cumulative Residential Collection Tons through December 2002:

• Collected by Waste Management:	87,360 Tons	0.5% decrease vs. same period in '01
• Collected by Rabanco:	55,551 Tons	1.2% decrease vs. same period in '01

## Recycling & Disposal Station Self Haul Garbage Rates<sup>4</sup>:

Cars: \$13.35 per trip

Trucks: \$96.25 per ton (\$13.35 minimum)

<sup>1</sup> Car tons calculated based on 378.8 pounds per car for 2001 & 2002 according to study done from Jan-Dec 2000

<sup>2</sup> An estimated 64% of the self-haul truck tons are commercial according to a waste stream sampling study conducted in 1992.

<sup>3</sup> This is the rate for a one cubic yard container picked up once per week, which is the most common dumpster service level. Residential dumpster service rates vary based on the number and size of containers, the number of pickups per week, and the number of dwelling units.

<sup>4</sup> Vans & pickup trucks pay the per ton truck rate.

**CITY OF SEATTLE GARBAGE TONNAGE REPORT 2001-2002**

		SELF HAUL GARBAGE			RESIDENTIAL GARBAGE			COMMERCIAL GARBAGE						GRAND		
Year	Month			Total Self Haul	City <sup>1</sup> NRDS & SRDS	Private Diverted Tons <sup>9</sup>		TOTAL RES. GARB	City NRDS & SRDS <sup>14</sup>	Private WM <sup>10,13</sup>	WM Subtotal	City NRDS & SRDS <sup>14</sup>	Private Rabanco <sup>11</sup>	Rabanco Subtotal	TOTAL COMM. GARB	TOTAL TONS GARB DISPOSED
		Cars <sup>2</sup>	Trucks			WM	Rabanco									
2001	1	494	7,122	7,616	12,462	9		12,471		7,930	7,930		11,433	11,433	19,362	39,450
2001	2	421	6,558	6,979	10,130		40	10,170		6,570	6,570		10,176	10,176	16,746	33,895
2001	3	526	7,988	8,513	11,634		120	11,753		7,584	7,584		11,766	11,766	19,351	39,617
2001	4	577	7,939	8,516	11,387			11,387		6,988	6,988		12,514	12,514	19,502	39,405
2001	5	593	8,865	9,458	12,758			12,758		8,089	8,089		13,067	13,067	21,156	43,372
2001	6	625	8,743	9,369	12,139			12,139		7,096	7,096		12,718	12,718	19,813	41,321
2001	7	701	9,018	9,720	12,449			12,449		6,596	6,596		13,153	13,153	19,749	41,918
2001	8	676	9,430	10,106	12,989			12,989		6,698	6,698		13,047	13,047	19,745	42,840
2001	9	658	8,583	9,241	11,101			11,101		5,685	5,685		11,368	11,368	17,053	37,394
2001	10	489	7,955	8,444	12,497			12,497		7,035	7,035		12,835	12,835	19,870	40,811
2001	11	516	6,937	7,453	12,620		368	12,987		6,366	6,366		11,932	11,932	18,298	38,738
2001	12	542	6,349	6,891	11,845		12	11,857		5,836	5,836		11,924	11,924	17,760	36,508
2002	1	513	7,156	7,669	12,627	0	0	12,627	775	5,412	6,187	2,234	10,001	12,235	18,422	38,718
2002	2	476	6,831	7,307	9,896	363.68	333.44	10,593	1,758	3,727	5,486	4,156	6,300	10,457	15,943	33,843
2002	3	540	7,174	7,714	10,997	0.00	0.00	10,997	2,172	3,412	5,584	4,611	6,791	11,402	16,986	35,697
2002	4	595	8,112	8,707	12,117	0.00	0.00	12,117	1,148	5,441	6,589	4,752	7,112	11,863	18,452	39,276
2002	5	636	8,605	9,241	12,372	111.84	0.00	12,484	786	5,739	6,525	3,889	8,526	12,415	18,940	40,665
2002	6	718	9,039	9,757	11,399	0.00	0.00	11,399	375	5,652	6,027	1,662	10,282	11,944	17,972	39,127
2002	7	765	8,845	9,610	13,017	0.00	0.00	13,017	290	6,067	6,357	1,582	11,222	12,804	19,161	41,787
2002	8	756	8,709	9,465	12,148	0.00	0.00	12,148	247	6,153	6,399	1,454	10,963	12,416	18,816	40,429
2002	9	719	8,360	9,078	11,582	0.00	0.00	11,582	190	5,889	6,079	1,449	10,759	12,208	18,287	38,948
2002	10	563	8,530	9,093	12,152	0.00	0.00	12,152	199	6,580	6,779	1,830	10,696	12,526	19,305	40,550
2002	11	548	7,435	7,982	11,608	78.16	72.45	11,759	165	6,325	6,490	1,732	9,872	11,604	18,094	37,835
2002	12	524	6,743	7,267	12,035	0.00	0.00	12,035	132	5,440	5,572	1,783	9,886	11,670	17,241	36,544
Total 2002		7,353	95,537	102,891	141,951	553.68	405.89	142,910	8,237	65,837	74,074	31,135	112,409	143,544	217,618	463,419
Total 2001		6,818	95,487	102,305	144,011		9	144,559		82,472	82,472		145,933	145,933	228,405	475,270
Total 2000		6,323	95,560	101,883	144,595		368	145,832		91,722	91,722		136,695	136,695	228,417	476,132
Total 1999 <sup>13</sup>		6,989	97,378	104,367	147,718			147,718		85,952	85,952		139,396	139,396	225,348	477,433
Total 1998		16,883	81,136	98,019	143,704		2,230	145,934		80,217	80,217		133,429	133,429	213,646	457,598
Total 1997		15,750	81,396	97,146	147,956		16	147,972		79,053	79,053		129,617	129,617	208,670	453,787
Total 1996 <sup>12</sup>		13,777	70,091	83,868	143,327		962	144,289		71,448	71,448		123,521	123,521	194,969	423,127
Total 1995 <sup>8</sup>		13,279	71,208	84,487	145,654		572	146,226		75,581	75,581		121,121	121,121	196,702	427,415
Total 1994		13,064	74,291	87,354	148,023		2,043	150,066		75,144	75,144		119,623	119,623	194,767	432,187
Total 1993		8,665	76,853	85,518	144,127			144,127		73,915	73,915		126,676	126,676	200,591	430,236
Total 1992		8,178	80,742	88,920	142,154			142,154		68,742	68,742		125,596	125,596	194,338	425,412
Total 1991		7,947	68,576	76,523	140,722			140,722		74,389	74,389		147,868	147,868	222,257	439,502
Total 1990 <sup>3</sup>		7,253	73,939	81,192	140,528			140,528		78,461	78,461		157,664	157,664	236,125	457,845
Total 1989 <sup>4,5</sup>		6,919	58,720	65,639	143,221			143,221		75,513	75,513		121,029	121,029	196,542	405,402
Total 1988 <sup>6</sup>		11,810	75,557	87,367	179,966			179,966		72,680	72,680		125,494	125,494	198,174	465,507
Total 1987 <sup>7</sup>		13,622	88,147	101,769	188,800			188,800		55,212	55,212		170,703	170,703	225,915	516,484
Total 1986		25,278	105,442	130,720	190,584			190,584		50,947	50,947		151,189	151,189	202,136	523,440

1 There are two city owned recycling and disposal stations, one in the North end of the City (NRDS) and one in the South (SRDS).

2 Car weight estimate of 378.8 pounds per car based on study done from Jan - Dec 2000  
 Car weight estimate for 1999/2000 based on 333 pounds per car  
 Car weight estimate for 1998 based on 433 pounds per car.  
 Car weight estimate for 1994/95 based on 290 pounds per car.

3 Wood Waste Program at city owned transfer stations began in January, 1990

4 Apartment Recycling Program began in May, 1989

5 Curbside Yard Waste Collection began in January, 1989

6 Curbside Recycling Program began in February, 1988

7 Yard Waste "Clean Green" Program began in August, 1987

8 3,220 tons of residuals from the yard waste program were returned to SRDS in 1995 but not weighed in. These have been added in as self haul truck tons.

9 When tons are diverted to a private station it is usually due to equipment failure or maintenance.

10 Eastmont figures are "incoming" tons as reported by WM.

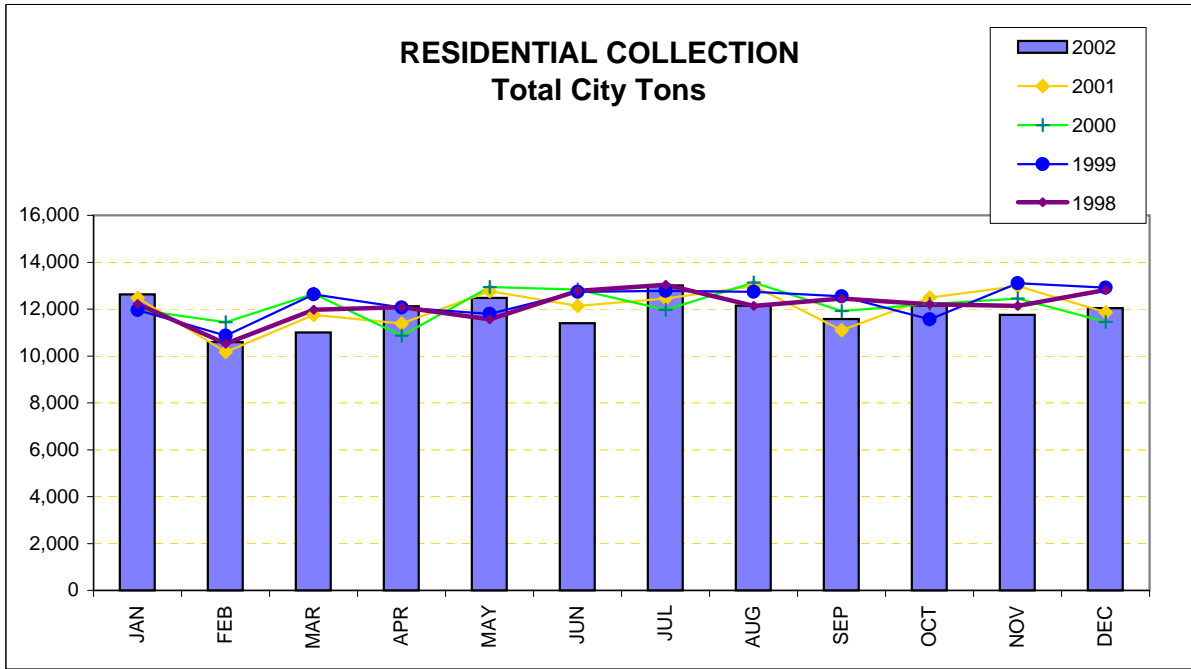
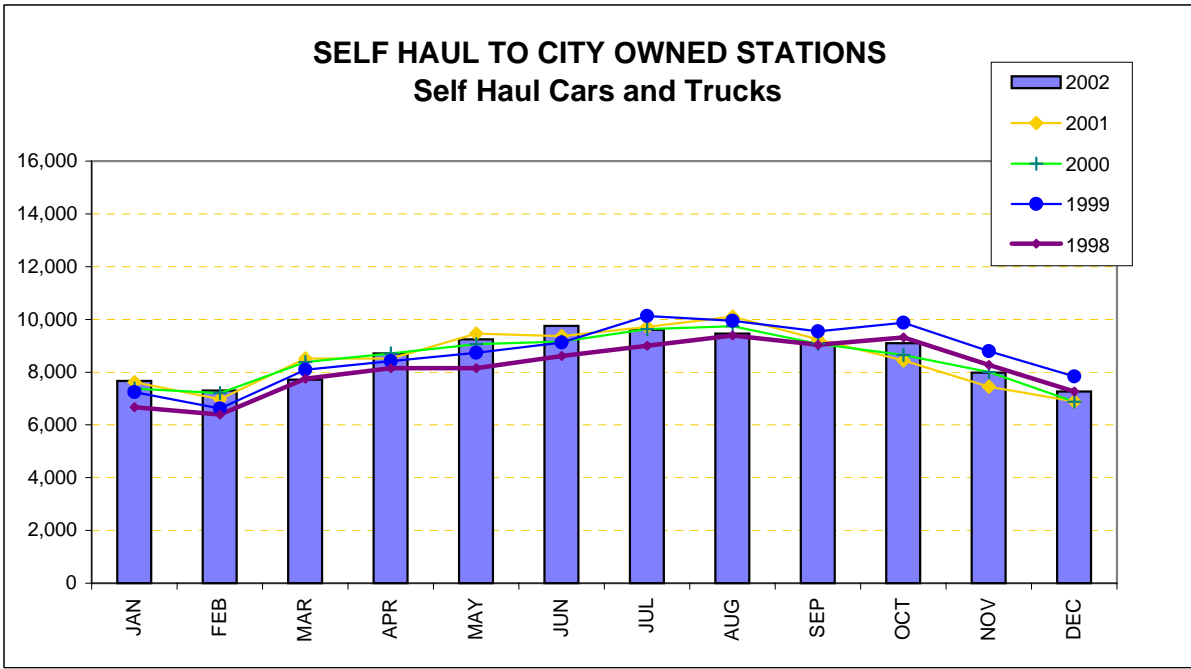
11 Rabanco's tons are "incoming" beginning 1/1/1999 as reported by Rabanco.

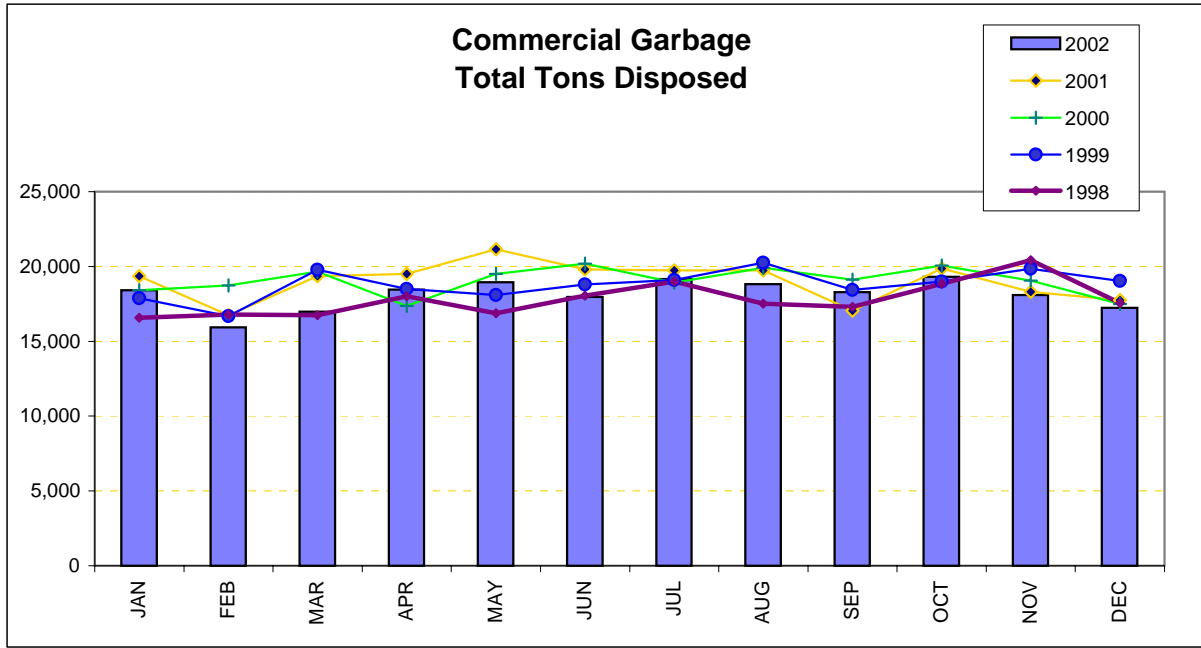
12 158 commercial tons were taken to Klickitat from Rabanco in May 96 due to container shortages. These tons have been added back in the above table.

13 The large decrease in car tons from '98 to '99 is attributable to two factors. There was an increase in the per ton "car" rate from \$8.50 to \$13.00. In addition, vans/pick-ups are no longer considered as "car" rate & must pay the per ton rate as "trucks."

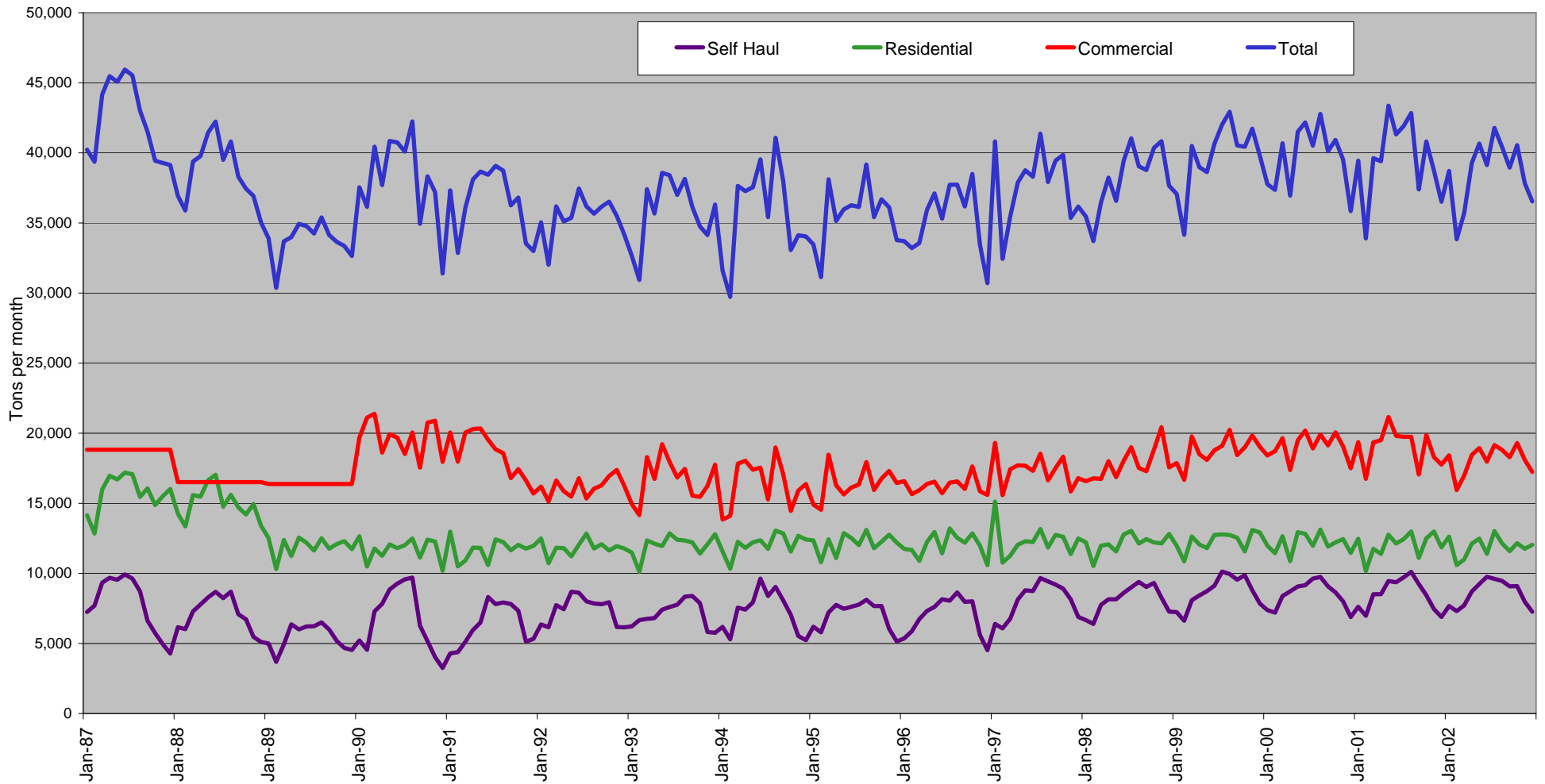
14 Beginning Jan 18, 2002 a portion of commercial garbage coming to city transfer stations.

15 Outgoing tons from Eastmont received at the railhead used in Nov & Dec 2002. Tons may be revised as incoming figures become available at a later date.





# City of Seattle Garbage Disposal



Monthly commercial tonnage for 1987-1989 estimated from annual data.