

CURBSIDE RECYCLING REPORT

December 2002

Seattle Public Utilities, Resource Planning Division, Forecasting & Evaluation Section
Report Date: January 23, 2002

Phone: (206) 684-4143

TONNAGE BREAKDOWN

North End Tons (Without Contaminants)

North End in Dec 2002:	2,622 Tons	6.2% increase from 2001
Cumulative North End:	29,316 Tons	0.2% decrease from 2001

South End Tons (Without Contaminants)

South End in Dec 2002:	2,792 Tons	7.1% increase from 2001
Cumulative South End:	30,090 Tons	0.7% increase from 2001

Citywide Tons (Without Contaminants)

Citywide in Dec 2002:	5,414 Tons	6.7% increase from 2001
Cumulative Citywide:	59,406 Tons	0.3% increase from 2001

Selected Statistics for January – December 2002

Average Pounds Per Eligible Household Per Month¹

North End:	70.7	(69,221 eligible households)
South End:	65.4	(76,819 eligible households)

Small Business Curbside Recycling - December 2002²

	Eligible Small Businesses	Small Businesses Signed Up	% Signed Up
North End	N/A	270	N/A
South End	N/A	255	N/A
Citywide	N/A	525	N/A

Service Citywide:

All materials are collected every other week on the same day as garbage collection service. Residents are provided 60 or 90 gallon carts for mixed recyclables and a 10 gallon bin for glass.

¹ Beginning Jan 2002, eligible household data based on new billing system (Banner).

² Data from Commercial contractors on Eligible businesses not available this quarter. Previous Small Business data provided by contractors is currently under review. Small Business sign-up information comes from city billing system.

Materials Citywide³:

Newspaper, Mixed Paper⁴, Glass, Aluminum, Tin, PET & HDPE⁵ Bottles, Ferrous Metals, Plastic Bags (grocery bags), Plastic Containers (dairy/yogurt containers), milk cartons and juice boxes.

Small Business Curbside Recycling:

Businesses in Seattle using 90 gallon garbage cans or smaller are eligible to sign up for the free residential curbside recycling program. Small businesses signed up for curbside recycling have their recyclables collected by the same contractors providing residential recycling service in their area. This means Waste Management services small business recycling North of the Ship Canal and Allied Waste services small business recycling South of the Ship Canal. Small business recycling is collected by either the curbside trucks who pick up recyclables from can customers or apartment recycling trucks who pick up recyclables from dumpster customers. Therefore, the tonnages from the small business recycling program appear in both the apartment and curbside programs. We are showing all the small business sign ups on the curbside report. Further, it is not possible to separate these new commercial customer recycling tons from residential recycling tons.

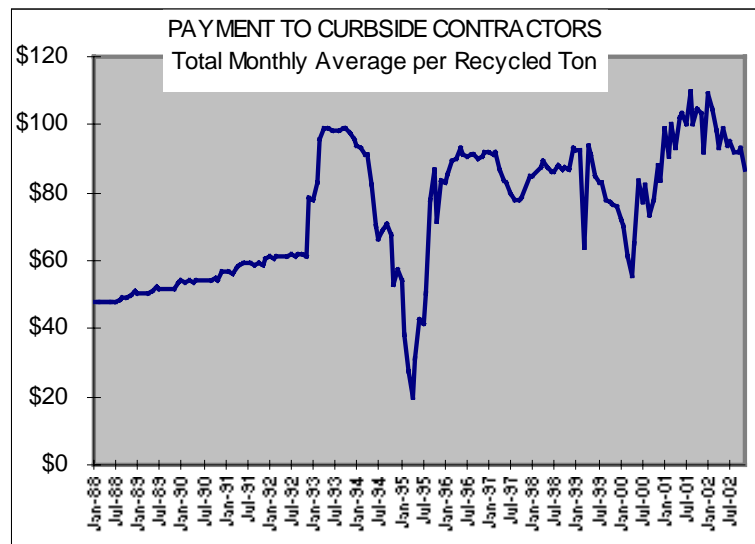
Program Costs⁶

Citywide Cumulative Average Cost/Ton

1988	\$ 48.55	1996	\$ 89.15
1989	\$ 51.33	1997	\$ 84.59
1990	\$ 54.20	1998	\$ 86.88
1991	\$ 58.28	1999	\$ 86.39
1992	\$ 61.41	2000 ⁷	\$ 73.17
1993	\$ 93.25	2001	\$ 94.46
1994	\$ 77.38	2002	\$ 99.71
1995	\$ 50.27		

Avg. Cost in December 2002: \$90.89

(Payment to contractors falls when market prices for recyclable materials increase.)



³ Effective April 1, 2000, the new contracts allow residents to combine all their recyclable materials - except glass – in one container. More kinds of materials can be recycled, including milk cartons, juice boxes, plastic bags, and plastic dairy and yogurt containers. Residents have one collection day per week for garbage, recycling and yard waste. Garbage is collected weekly. Recycling and yardwaste are collected on the same day on alternating weeks—recycling one week, yard waste the next week.

⁴ Overall, approximately 12% of the mixed paper is cardboard (OCC) based on 2000/2001 sampling data.

⁵ HDPE Bottles were added in April 1992. The overall breakdown between HDPE and PET is 51% and 49% respectively based on 2000/2001 sampling data.

⁶ Figures shown reflect the average amount SPU pays the recycling contractors, which is a total contract price plus (or minus) a variable amount determined by market prices. In other words, the figures reflect the cost to the city of collection and sorting (including payment for disposal of contaminants). Revenue received for sale of the materials belongs to the contractor and as such these cost figures should not be construed as the total net cost of recycling; figures also do not include costs such as liquidated damages and SPU program administration.

⁷ As of April 2000 recycling program costs include both curbside (single family) and apartment (multi-family) programs. Prior to April 2000, the costs shown are only for the curbside program.

CURBSIDE RECYCLING PROGRAM

NORTH END TONNAGE DATA															
Yr	Mo	FERROUS			MIXED PAPER	NEWS-PAPER	PLASTIC (PET/HDPE)	TIN	CONTAM-INANTS	TOTAL w/cont	TOTAL w/o cont	SET OUTS	ELIGIBLE HOUSEHOLDS ²	POUNDS PER HOUSEHOLD	POUNDS PER SET OUT
		ALUM	METAL	GLASS											
2001	1	18.5	1.4	496.5	1,110.4	915.3	62.0	32.3	81.5	2,717.8	2,636.3	NA	69,800	75.5	NA
2001	2	15.4	1.1	414.7	927.5	764.5	51.8	27.0	68.1	2,270.1	2,202.0	NA	69,800	63.1	NA
2001	3	16.5	1.2	443.9	992.8	818.4	55.4	28.9	72.9	2,430.1	2,357.2	NA	69,800	67.5	NA
2001	4	16.1	1.2	432.7	967.8	797.7	54.0	28.2	71.1	2,368.7	2,297.7	NA	69,800	65.8	NA
2001	5	19.6	1.4	526.2	1,176.9	970.1	65.7	34.3	86.4	2,880.7	2,794.2	NA	69,800	80.1	NA
2001	6	17.3	1.3	465.9	1,041.9	858.8	58.1	30.3	76.5	2,550.2	2,473.7	NA	69,800	70.9	NA
2001	7	16.6	1.2	446.9	999.5	823.8	55.8	29.1	73.4	2,446.3	2,372.9	NA	69,800	68.0	NA
2001	8	17.8	1.3	477.7	1,068.2	880.5	59.6	31.1	78.4	2,614.7	2,536.2	NA	69,800	72.7	NA
2001	9	15.4	1.1	412.5	922.6	760.5	51.5	26.9	67.7	2,258.3	2,190.5	NA	69,800	62.8	NA
2001	10	17.9	1.3	482.0	1,078.0	888.6	60.2	31.4	79.2	2,638.6	2,559.5	NA	69,800	73.3	NA
2001	11	17.4	1.3	466.8	1,043.9	860.4	58.2	30.4	76.6	2,555.0	2,478.4	NA	69,800	71.0	NA
2001	12	17.3	1.3	465.0	1,040.0	857.2	58.0	30.3	76.4	2,545.5	2,469.1	NA	69,800	70.7	NA
2002	1	18.1	1.3	487.6	1,090.4	898.8	60.8	31.8	80.1	2,669.0	2,588.9	NA	69,060	75.0	NA
2002	2	14.4	1.1	387.7	867.2	714.8	48.4	25.3	63.7	2,122.5	2,058.9	NA	69,060	59.6	NA
2002	3	15.1	1.1	406.3	908.6	748.9	50.7	26.5	66.7	2,223.9	2,157.2	NA	69,060	62.5	NA
2002	4	16.6	1.2	445.8	997.0	821.8	55.6	29.0	73.2	2,440.2	2,367.0	NA	69,060	68.5	NA
2002	5	18.2	1.3	489.4	1,094.5	902.2	61.1	31.9	80.4	2,678.9	2,598.6	NA	69,173	75.1	NA
2002	6	16.2	1.2	436.3	975.8	804.3	54.5	28.4	71.6	2,388.4	2,316.8	NA	69,199	67.0	NA
2002	7	17.7	1.3	476.0	1,064.6	877.5	59.4	31.0	78.2	2,605.8	2,527.6	NA	69,159	73.1	NA
2002	8	17.5	1.3	470.1	1,051.3	866.6	58.7	30.6	77.2	2,573.3	2,496.1	NA	69,189	72.2	NA
2002	9	18.2	1.3	489.7	1,095.2	902.8	61.1	31.9	80.4	2,680.7	2,600.3	NA	69,222	75.1	NA
2002	10	17.9	1.3	481.6	1,077.1	887.8	60.1	31.4	79.1	2,636.3	2,557.2	NA	69,196	73.9	NA
2002	11	17.0	1.3	456.8	1,021.6	842.1	57.0	29.8	75.0	2,500.6	2,425.6	NA	69,213	70.1	NA
2002	12	18.4	1.4	493.9	1,104.5	910.4	61.6	32.2	81.1	2,703.4	2,622.3	NA	69,221	75.8	NA
2002 Total:		205.5	15.1	5,521.2	12,347.9	10,178.1	689.0	359.6	906.6	30,223.0	29,316.4		2002 Avg:	70.7	N/A
2001 Total:		205.9	15.1	5,530.9	12,369.5	10,195.9	690.2	360.2	908.2	30,276.0	29,367.8		2001 Avg:	70.1	N/A
2000 Total:		268.8	20.8	6,424.5	12,321.4	11,151.9	717.5	351.6	992.7	32,012.0	31,256.5		2000 Avg:	74.6	N/A
1999 Total:		476.2	45.9	7,329.5	12,126.4	13,657.2	412.7	952.3	271.6	35,271.7	35,000.1		1999 Avg:	83.6	21.9
1998 Total:		446.4	43.0	6,871.3	11,368.4	12,803.5	386.9	892.8	254.6	33,066.8	32,812.2		1998 Avg:	78.3	22.3
1997 Total:		436.1	42.0	6,712.9	11,106.3	12,508.3	378.0	872.2	248.7	32,304.4	32,055.7		1997 Avg:	76.5	23.0
1996 Total:		408.4	39.3	6,286.3	10,400.6	11,713.5	353.9	816.8	232.9	30,251.8	30,018.9		1996 Avg:	71.7	23.1
1995 Total:		415.2	40.0	6,391.7	10,574.9	11,909.9	359.9	830.5	236.8	30,759.0	30,522.1		1995 Avg:	72.9	24.2
1994 Total:		408.0	39.3	6,279.8	10,389.8	11,701.3	353.6	815.9	232.7	30,220.4	29,987.7		1994 Avg:	71.6	24.7
1993 Total:		379.6	36.6	5,843.1	9,667.2	10,887.6	329.0	759.2	216.5	28,118.7	27,902.2		1993 Avg:	66.4	23.5
1992 Total:		575.2	NA	6,595.5	9,289.1	7,915.0	182.7	917.2	498.2	25,972.9	25,474.7		1992 Avg:	60.7	23.1
1991 Total:		410.6	NA	5,961.3	11,116.4	6,540.8	157.9	1,004.0	252.5	25,443.5	25,191.0		1991 Avg:	60.0	24.1
1990 Total:		658.5	NA	4,874.2	9,687.8	9,057.2	64.1	745.4	115.8	25,203.0	25,087.2		1990 Avg:	59.9	26.6
1989 Total:		320.1	NA	5,296.5	9,118.7	7,524.8	13.3	678.0	31.0	22,982.4	22,951.4		1989 Avg:	58.9	25.8
1988 Total:		159.4	NA	3,574.5	5,186.7	5,411.5	0.0	392.2	39.4	14,763.7	14,724.3		1988 Avg:	41.2	29.2

NORTH END PERCENTAGE BREAKDOWN BY MATERIAL									
YEAR	FERROUS			MIXED PAPER	NEWS-PAPER	PLASTIC (PET/HDPE)	TIN	CONTAM-INANTS	TOTAL w/cont
	ALUM	METAL	GLASS						
2002 Avg:	0.68%	0.05%	18.27%	40.86%	33.68%	2.28%	1.19%	3.00%	100%
2001 Avg:	0.68%	0.05%	18.27%	40.86%	33.68%	2.28%	1.19%	3.00%	100%
2000 Avg:	0.84%	0.06%	20.07%	38.49%	34.84%	2.24%	1.10%	3.10%	100%
1999 Avg:	1.35%	0.13%	20.78%	34.38%	38.72%	1.17%	2.70%	0.77%	100%
1998 Avg:	1.35%	0.13%	20.78%	34.38%	38.72%	1.17%	2.70%	0.77%	100%
1997 Avg:	1.35%	0.13%	20.78%	34.38%	38.72%	1.17%	2.70%	0.77%	100%
1996 Avg:	1.35%	0.13%	20.78%	34.38%	38.72%	1.17%	2.70%	0.77%	100%
1995 Avg:	1.35%	0.13%	20.78%	34.38%	38.72%	1.17%	2.70%	0.77%	100%
1994 Avg:	1.35%	0.13%	20.78%	34.38%	38.72%	1.17%	2.70%	0.77%	100%
1993 Avg:	1.35%	0.10%	20.80%	34.44%	38.70%	1.20%	2.70%	0.80%	100%
1992 Avg:	2.20%	NA	25.40%	35.80%	30.50%	0.70%	3.50%	1.90%	100%
1991 Avg:	1.60%	NA	23.70%	43.60%	25.40%	0.60%	4.00%	1.00%	100%
1990 Avg:	1.40%	NA	19.40%	39.00%	36.40%	0.30%	3.00%	0.50%	100%
1989 Avg:	1.40%	NA	23.00%	39.70%	32.70%	0.10%	3.00%	0.10%	100%
1988 Avg:	1.00%	NA	24.20%	35.10%	36.70%	0.00%	2.70%	0.30%	100%

CURBSIDE RECYCLING PROGRAM

SOUTH END TONNAGE DATA																
Yr	Mo	FERROUS			MIXED PAPER	NEWS-PAPER	PLASTIC (PET/HDPE)	TIN	CONTAM-INANTS	TOTAL w/cont	TOTAL w/o cont	SET OUTS	ELIGIBLE HOUSEHOLDS ²	POUNDS PER HOUSEHOLD	POUNDS PER SET OUT	
		ALUM	METAL	GLASS												
2001	1	17.4	6.3	450.8	1161.0	984.7	63.9	30.5	138.4	2,853.0	2,714.6	NA	78,500	69.2	NA	
2001	2	13.7	4.9	354.7	913.5	774.7	50.3	24.0	108.9	2,244.7	2,135.8	NA	78,500	54.4	NA	
2001	3	15.5	5.6	402.4	1036.2	878.8	57.0	27.2	123.5	2,546.3	2,422.8	NA	78,500	61.7	NA	
2001	4	14.8	5.3	382.3	984.6	835.1	54.2	25.9	117.4	2,419.6	2,302.2	NA	78,500	58.7	NA	
2001	5	17.5	6.3	453.9	1169.0	991.4	64.4	30.7	139.3	2,872.6	2,733.3	NA	78,500	69.6	NA	
2001	6	15.7	5.7	405.9	1045.3	886.6	57.5	27.5	124.6	2,568.8	2,444.2	NA	78,500	62.3	NA	
2001	7	15.8	5.7	408.6	1052.2	892.4	57.9	27.7	125.4	2,585.6	2,460.1	NA	78,500	62.7	NA	
2001	8	16.6	6.0	430.3	1108.0	939.8	61.0	29.1	132.1	2,722.9	2,590.8	NA	78,500	66.0	NA	
2001	9	14.7	5.3	380.8	980.6	831.6	54.0	25.8	116.9	2,409.6	2,292.7	NA	78,500	58.4	NA	
2001	10	16.6	6.0	429.2	1105.3	937.5	60.8	29.1	131.8	2,716.2	2,584.5	NA	78,500	65.8	NA	
2001	11	16.6	6.0	430.7	1109.3	940.8	61.1	29.2	132.2	2,726.0	2,593.7	NA	78,500	66.1	NA	
2001	12	16.7	6.0	432.8	1114.7	945.4	61.4	29.3	132.9	2,739.2	2,606.3	NA	78,500	66.4	NA	
2002	1	17.7	6.4	458.3	1180.3	1001.1	65.0	31.0	140.7	2,900.5	2,759.8	NA	76,548	72.1	NA	
2002	2	13.6	4.9	353.1	909.4	771.3	50.1	23.9	108.4	2,234.7	2,126.3	NA	76,548	55.6	NA	
2002	3	14.3	5.2	370.6	954.4	809.5	52.5	25.1	113.8	2,345.4	2,231.7	NA	76,548	58.3	NA	
2002	4	15.5	5.6	401.4	1033.7	876.7	56.9	27.2	123.2	2,540.2	2,416.9	NA	76,548	63.1	NA	
2002	5	16.6	6.0	429.4	1105.7	937.8	60.9	29.1	131.8	2,717.2	2,585.4	NA	76,637	67.5	NA	
2002	6	15.7	5.7	407.2	1048.5	889.3	57.7	27.6	125.0	2,576.6	2,451.7	NA	76,668	64.0	NA	
2002	7	16.9	6.1	437.5	1126.8	955.6	62.0	29.6	134.3	2,768.9	2,634.6	NA	76,695	68.7	NA	
2002	8	16.1	5.8	415.9	1071.1	908.4	59.0	28.2	127.7	2,632.0	2,504.3	NA	76,764	65.2	NA	
2002	9	16.0	5.8	414.6	1067.8	905.6	58.8	28.1	127.3	2,624.0	2,496.7	NA	76,785	65.0	NA	
2002	10	16.7	6.0	433.4	1116.1	946.6	61.4	29.3	133.0	2,742.6	2,609.6	NA	76,815	67.9	NA	
2002	11	15.9	5.7	412.0	1060.9	899.8	58.4	27.9	126.5	2,607.1	2,480.6	NA	76,810	64.6	NA	
2002	12	17.9	6.5	463.7	1194.1	1012.8	65.7	31.4	142.3	2,934.4	2,792.1	NA	76,819	72.7	NA	
2002 Total:		192.9	69.6	4,997.0	12,868.9	10,914.4	708.4	338.4	1,533.9	31,623.6	30,089.7		2002 Avg:	65.4	NA	
2001 Total:		191.6	69.1	4,962.4	12,779.7	10,838.8	703.5	336.1	1,523.3	31,404.4	29,881.2		2001 Avg:	63.4	NA	
2000 Total:		221.5	64.7	5,538.6	12,665.2	11,347.8	724.6	396.2	1,439.5	32,398.0	30,958.5		2000 Avg:	65.7	NA	
1999 Total:		323.5	35.9	5,639.7	10,743.8	10,290.1	314.6	487.5	755.2	28,590.2	27,835.1		1999 Avg:	59.1	74.8	
1998 Total:		316.4	35.2	5,516.6	10,509.2	10,065.4	307.7	476.9	738.7	27,965.9	27,227.2		1998 Avg:	57.8	71.8	
1997 Total:		304.9	33.9	5,316.2	10,127.4	9,699.7	296.5	459.6	711.9	26,950.1	26,238.2		1997 Avg:	55.7	67.4	
1996 Total:		284.7	31.6	4,963.1	9,454.8	9,055.5	276.8	429.1	664.6	25,160.2	24,495.6		1996 Avg:	52.0	63.2	
1995 Total:		292.5	32.5	5,099.1	9,713.8	9,303.6	284.4	440.8	682.8	25,849.4	25,166.6		1995 Avg:	53.2	66.6	
1994 Total:		288.4	32.0	5,027.6	9,173.7	9,173.3	280.4	434.6	673.2	25,487.3	24,814.1		1994 Avg:	52.7	67.5	
1993 Total:		273.2	30.4	4,763.7	9,074.9	8,691.7	228.5	411.8	637.9	24,149.3	23,474.2		1993 Avg:	49.8	71.6	
1992 Total:		287.6	NA	4,106.5	8,321.5	9,497.9	106.1	492.7	761.4	23,573.7	22,812.3		1992 Avg:	48.4	68.5	
1991 Total:		274.0	NA	3,579.1	8,421.4	9,562.4	110.4	419.7	751.9	23,118.9	22,367.0		1991 Avg:	47.5	70.1	
1990 Total:		236.6	NA	4,222.7	7,514.0	8,315.8	99.0	561.4	570.1	21,519.6	20,949.5		1990 Avg:	43.9	72.3	
1989 Total:		113.1	NA	3,374.9	6,030.9	7,590.8	75.6	601.9	90.0	17,877.2	17,787.2		1989 Avg:	36.2	70.2	
1988 Total:		82.9	NA	1,259.1	2,553.0	5,069.9	0.0	257.0	0.0	9,221.9	9,221.9		1988 Avg:	25.0	74.9	

SOUTH END PERCENTAGE BREAKDOWN BY MATERIAL										
YEAR	ALUM	FERROUS METAL	GLASS	MIXED PAPER	NEWS-PAPER	PLASTIC (PET/HDPE)	TIN	CONTAM-INANTS	TOTAL w/cont	
2002 Avg:	0.61%	0.22%	15.80%	40.69%	34.51%	2.24%	1.07%	4.85%	100%	
2001 Avg:	0.61%	0.22%	15.80%	40.69%	34.51%	2.24%	1.07%	4.85%	100%	
2000 Avg:	0.68%	0.20%	17.10%	39.09%	35.03%	2.24%	1.22%	4.44%	100%	
1999 Avg:	1.13%	0.13%	19.73%	37.58%	35.99%	1.10%	1.71%	2.64%	100%	
1998 Avg:	1.13%	0.13%	19.73%	37.58%	35.99%	1.10%	1.71%	2.64%	100%	
1997 Avg:	1.13%	0.13%	19.73%	37.58%	35.99%	1.10%	1.71%	2.64%	100%	
1996 Avg:	1.13%	0.13%	19.73%	37.58%	35.99%	1.10%	1.71%	2.64%	100%	
1995 Avg:	1.13%	0.13%	19.73%	37.58%	35.99%	1.10%	1.71%	2.64%	100%	
1994 Avg:	1.13%	0.09%	19.73%	37.62%	36.03%	1.10%	1.71%	2.64%	100%	
1993 Avg:	1.15%	0.10%	19.18%	37.08%	37.06%	0.95%	1.80%	2.79%	100%	
1992 Avg:	1.20%	NA	17.40%	35.30%	40.30%	0.50%	2.10%	3.20%	100%	
1991 Avg:	1.20%	NA	15.50%	36.40%	41.40%	0.50%	1.80%	3.30%	100%	
1990 Avg:	1.10%	NA	19.60%	34.90%	38.60%	0.50%	2.60%	2.70%	100%	
1989 Avg:	0.60%	NA	18.90%	33.70%	42.50%	0.40%	3.40%	0.50%	100%	
1988 Avg:	0.90%	NA	13.70%	27.70%	55.00%	0.00%	2.80%	0.00%	100%	

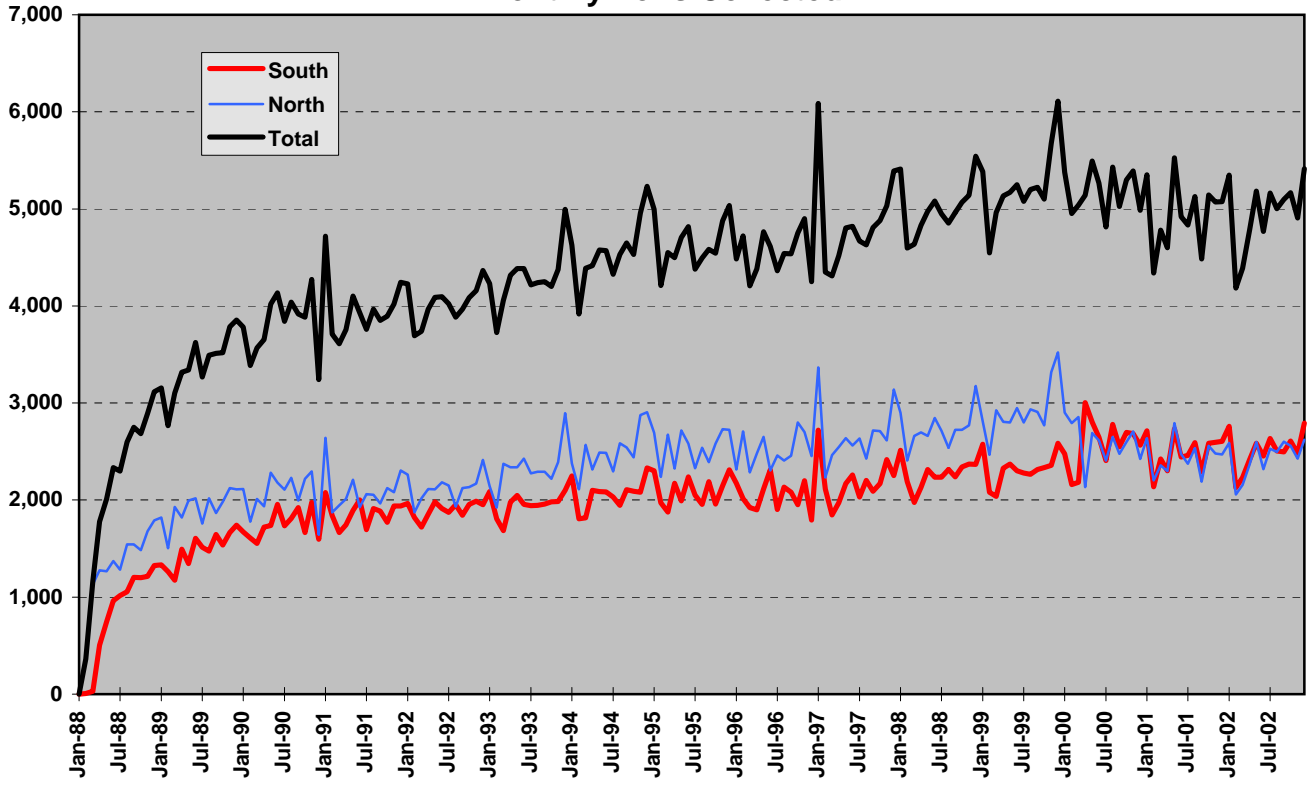
CURBSIDE RECYCLING PROGRAM

TOTAL CITY TONNAGE DATA														
Yr	Mo	FERROUS			MIXED PAPER	NEWS-PAPER	PLASTIC (PET/HDPE)	TIN	CONTAM-INANTS	TOTAL w/cont	TOTAL w/o cont	SET OUTS	ELIGIBLE HOUSEHOLDS ²	POUNDS PER HOUSEHOLD
		ALUM	METAL	GLASS										
2001	1	35.9	7.6	947.3	2,271.4	1,899.9	125.9	62.9	219.9	5,570.8	5,350.9	NA	148,300	72.2
2001	2	29.1	6.1	769.4	1,840.9	1,539.2	102.0	51.0	177.0	4,514.8	4,337.9	NA	148,300	58.5
2001	3	32.1	6.8	846.3	2,029.0	1,697.2	112.4	56.2	196.4	4,976.4	4,780.0	NA	148,300	64.5
2001	4	30.9	6.5	815.1	1,952.4	1,632.8	108.2	54.1	188.4	4,788.3	4,599.9	NA	148,300	62.0
2001	5	37.1	7.8	980.2	2,345.9	1,961.6	130.0	65.0	225.7	5,753.3	5,527.5	NA	148,300	74.5
2001	6	33.0	6.9	871.8	2,087.3	1,745.4	115.7	57.8	201.1	5,119.0	4,917.9	NA	148,300	66.3
2001	7	32.4	6.9	855.5	2,051.6	1,716.2	113.7	56.8	198.8	5,031.8	4,833.1	NA	148,300	65.2
2001	8	34.4	7.3	907.9	2,176.3	1,820.3	120.6	60.2	210.5	5,337.5	5,127.0	NA	148,300	69.1
2001	9	30.1	6.4	793.3	1,903.2	1,592.2	105.5	52.7	184.6	4,667.9	4,483.3	NA	148,300	60.5
2001	10	34.5	7.3	911.2	2,183.4	1,826.1	121.0	60.5	210.9	5,354.8	5,143.9	NA	148,300	69.4
2001	11	34.0	7.3	897.5	2,153.2	1,801.3	119.3	59.6	208.9	5,281.0	5,072.1	NA	148,300	68.4
2001	12	34.0	7.3	897.8	2,154.7	1,802.6	119.4	59.6	209.2	5,284.6	5,075.4	NA	148,300	68.4
2002	1	35.8	7.7	945.9	2,270.8	1,899.9	125.8	62.8	220.7	5,569.5	5,348.7	NA	145,608	73.5
2002	2	28.1	6.0	740.9	1,776.6	1,486.1	98.5	49.2	172.1	4,357.2	4,185.2	NA	145,608	57.5
2002	3	29.4	6.3	776.9	1,863.0	1,558.4	103.2	51.6	180.5	4,569.3	4,388.9	NA	145,608	60.3
2002	4	32.1	6.8	847.2	2,030.7	1,698.5	112.5	56.2	196.4	4,980.4	4,784.0	NA	145,608	65.7
2002	5	34.8	7.3	918.8	2,200.2	1,840.0	121.9	61.0	212.2	5,396.1	5,184.0	NA	145,810	71.1
2002	6	32.0	6.9	843.5	2,024.4	1,693.6	112.2	56.0	196.6	4,965.1	4,768.5	NA	145,867	65.4
2002	7	34.6	7.4	913.6	2,191.4	1,833.2	121.4	60.6	212.5	5,374.7	5,162.2	NA	145,854	70.8
2002	8	33.6	7.1	886.0	2,122.4	1,775.0	117.6	58.8	204.9	5,205.3	5,000.4	NA	145,953	68.5
2002	9	34.2	7.1	904.3	2,163.0	1,808.4	119.9	60.0	207.7	5,304.7	5,097.0	NA	146,007	69.8
2002	10	34.7	7.4	915.0	2,193.2	1,834.4	121.5	60.7	212.1	5,378.9	5,166.8	NA	146,011	70.8
2002	11	32.9	7.0	868.8	2,082.5	1,741.9	115.4	57.7	201.5	5,107.6	4,906.2	NA	146,023	67.2
2002	12	36.3	7.8	957.5	2,298.6	1,923.2	127.4	63.6	223.4	5,637.7	5,414.3	NA	146,040	74.1
2002 Total:		398.4	84.7	10,518.2	25,216.8	21,092.5	1,397.5	698.0	2,440.5	61,846.6	59,406.1		2002 Avg:	67.9
2001 Total:		397.4	84.2	10,493.3	25,149.3	21,034.7	1,393.8	696.3	2,431.5	61,680.4	59,249.0		2001 Avg:	66.6
2000 Total:		490.2	85.5	11,963.1	24,986.6	22,499.7	1,442.1	747.8	2,432.2	64,410.0	62,215.0		2000 Avg:	69.9
1999 Total:		799.6	81.8	12,969.2	22,870.2	23,947.3	727.3	1,439.9	1,026.8	63,862.0	62,835.2		1999 Avg:	70.6
1998 Total:		762.8	78.2	12,387.9	21,877.6	22,868.9	694.6	1,369.7	993.3	61,032.7	60,039.4		1998 Avg:	67.5
1997 Total:		741.0	75.9	12,029.0	21,233.7	22,208.0	674.5	1,331.8	960.6	59,254.5	58,293.9		1997 Avg:	67.5
1996 Total:		693.1	71.0	11,249.4	19,855.4	20,769.0	630.8	1,245.9	897.5	55,412.0	54,514.5		1996 Avg:	61.3
1995 Total:		707.7	72.5	11,490.8	20,288.7	21,213.5	644.3	1,271.3	919.6	56,608.4	55,688.7		1995 Avg:	63.1
1994 Total:		696.3	71.3	11,307.4	19,967.5	20,874.6	634.0	1,250.6	905.9	55,707.7	54,801.8		1994 Avg:	61.6
1993 Total:		652.8	66.9	10,606.8	18,742.1	19,579.3	557.5	1,171.0	854.4	52,268.0	51,376.4		1993 Avg:	57.7
1992 Total:		862.8	NA	10,702.0	17,610.6	17,412.9	288.8	1,409.9	1,259.6	49,546.6	48,287.0		1992 Avg:	54.2
1991 Total:		684.6	NA	9,540.4	19,537.8	16,103.2	268.3	1,423.7	1,004.4	48,562.4	47,558.0		1991 Avg:	53.4
1990 Total:		895.1	NA	9,096.9	17,201.8	17,373.0	163.1	1,306.8	685.9	46,722.6	46,036.7		1990 Avg:	51.3
1989 Total:		433.2	NA	8,671.4	15,149.6	15,115.6	88.9	1,279.9	121.0	40,859.6	40,738.6		1989 Avg:	46.2
1988 Total:		242.3	NA	4,833.6	7,739.7	10,481.4	0.0	649.2	39.4	23,985.6	23,946.2		1988 Avg:	31.9

TOTAL CITY PERCENTAGE BREAKDOWN BY MATERIAL									
YEAR	ALUM	FERROUS METAL	GLASS	MIXED PAPER	NEWS-PAPER	PLASTIC (PET/HDPE)	TIN	CONTAM-INANTS	TOTAL w/cont
2002 Avg:	0.64%	0.14%	17.01%	40.77%	34.10%	2.26%	1.13%	3.95%	100%
2001 Avg:	0.64%	0.14%	17.01%	40.77%	34.10%	2.26%	1.13%	3.94%	100%
2000 Avg ¹ :	0.76%	0.13%	18.57%	38.79%	34.93%	2.24%	1.16%	3.78%	100%
1999 Avg:	1.25%	0.13%	20.31%	35.81%	37.50%	1.14%	2.25%	1.61%	100%
1998 Avg:	1.25%	0.13%	20.30%	35.85%	37.47%	1.14%	2.24%	1.63%	100%
1997 Avg:	1.25%	0.13%	20.30%	35.83%	37.48%	1.14%	2.25%	1.62%	100%
1996 Avg:	1.25%	0.13%	20.30%	35.83%	37.48%	1.14%	2.25%	1.62%	100%
1995 Avg:	1.25%	0.13%	20.30%	35.84%	37.47%	1.14%	2.25%	1.62%	100%
1994 Avg:	1.25%	0.13%	20.30%	35.84%	37.47%	1.14%	2.24%	1.63%	100%
1993 Avg:	1.25%	0.13%	20.29%	35.86%	37.46%	1.07%	2.24%	1.63%	100%
1992 Avg:	1.74%	NA	21.60%	35.54%	35.14%	0.58%	2.85%	2.54%	100%
1991 Avg:	1.41%	NA	19.65%	40.23%	33.16%	0.55%	2.93%	2.07%	100%
1990 Avg:	1.92%	NA	19.47%	36.82%	37.18%	0.35%	2.80%	1.47%	100%
1989 Avg:	1.06%	NA	21.22%	37.08%	36.99%	0.22%	3.13%	0.30%	100%
1988 Avg:	1.01%	NA	20.15%	32.27%	43.70%	0.00%	2.71%	0.16%	100%

1. November and December 2000 total tons collected were significantly lower than those same months in 1999. Part of the decline may be attributed to the newspaper strike which extended from November 21, 2000 - January 9, 2001.
 2. Beginning Jan 1, 2002 household data based on new billing system (Banner).

CURBSIDE RECYCLING Monthly Tons Collected



CURBSIDE RECYCLING Cumulative Tons Collected 2002

