

CURBSIDE RECYCLING REPORT

DECEMBER 1997

Seattle Public Utilities, Resource Planning Division, Forecasting & Evaluation Section

Report Date: March 2, 1998

Phone: (206) 684-7666

Cumulative Tons

North End: 32,056 (6.8% increase from 1996)

South End: 26,238 (7.1% increase from 1996)

Citywide: 58,294 (6.9% increase from 1996)

Historical: Total annual tons for 1988 through 1996 were 23,946, 40,732, 46,037, 47,558, 48,287, 51,379, 54,801, 55,689 and 54,515 respectively.

Selected Statistics for January - December 1997

Average Pounds Per Eligible Household Per Month

North End: 76.5 (69,800 eligible households)

South End: 55.7 (78,500 eligible households)

Average Pounds per Set out per Month

North End: 23.0 (268,265 set outs in December)

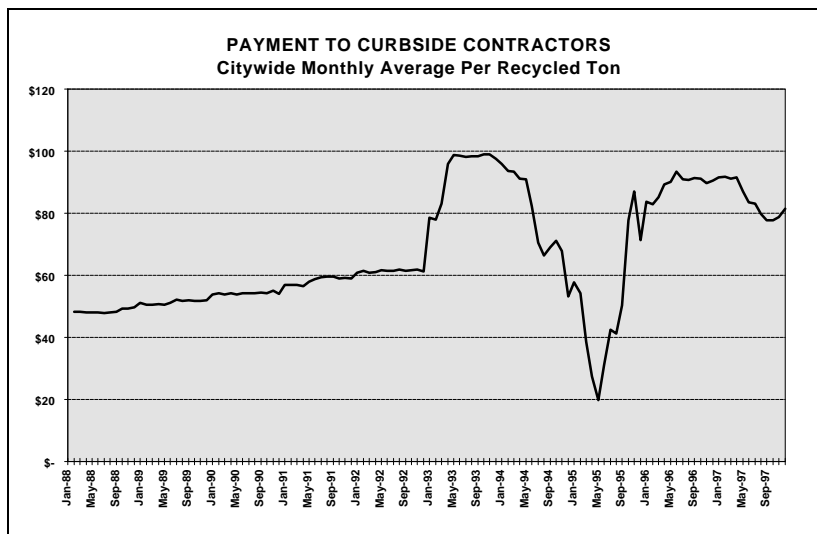
South End: 67.4 (63,646 set outs in December)

Service

North of Ship Canal: Source-separated weekly collection from 3 bins

South of Ship Canal: Co-mingled monthly collection from 90 gallon cart
(with separate container for glass only)

Materials Citywide: News, Mixed Paper¹, Glass, Aluminum, Tin, PET & HDPE²
Bottles, and Ferrous Metals



Program Costs³

Citywide Average Ton

1988	\$48.55
1989	\$51.33
1990	\$54.20
1991	\$58.28
1992	\$61.41
1993	\$93.25
1994	\$77.38
1995	\$50.27
1996	\$89.15
<u>1997</u>	<u>\$84.59</u>

Ave Cost in December 1997: \$81.41
(Payment to contractors fall when market prices for recyclable materials increase.)

- 1) Overall, approximately 28% of the mixed paper is cardboard (OCC) based on 1993/94 sampling data.
- 2) HDPE Bottles were added in April 1992. The overall breakdown between HDPE and PET is 54% and 46% respectively based on 1993/94 sampling data.
- 3) Figures shown reflect the amount SWU pays the recycling contractors which is a base price per ton plus (or minus) a variable amount determined by market prices. In other words, the figures reflect the cost of collection and sorting (including reimbursement of the south contractor for disposal of contaminants) net of revenue received for sale of the materials; figures do not include costs such as bin replacements, liquidated damages, and SWU program administration.

CURBSIDE RECYCLING PROGRAM

NORTH END TONNAGE DATA

Yr	Mo	ALUM	FERROUS METAL	GLASS	MIXED PAPER	NEWS-PAPER	PLASTIC (PET/HDPE)	TIN	CONTAM-INANTS	TOTAL w/cont	TOTAL w/o cont	SIGN UPS	SET OUTS	ELIGIBLE HOUSEHOLDS	POUNDS PER HOUSEHOLD	PERCENT SIGNUP	POUNDS PER SET OUT	
96	1	31.5	3.0	484.4	801.5	902.7	27.3	62.9	18.0	2,331.3	2,313.3	NA	193,782	69,800	66.3	NA	23.9	
96	2	36.8	3.5	566.8	937.7	1,056.1	31.9	73.6	21.0	2,727.5	2,706.4	NA	228,372	69,800	77.5	NA	23.7	
96	3	31.1	3.0	478.6	791.9	891.8	26.9	62.2	17.7	2,303.3	2,285.6	NA	197,884	69,800	65.5	NA	23.1	
96	4	33.8	3.3	519.6	859.6	968.2	29.3	67.5	19.3	2,500.4	2,481.2	NA	212,732	69,800	71.1	NA	23.3	
96	5	36.1	3.5	555.0	918.2	1,034.2	31.2	72.1	20.6	2,670.9	2,650.3	NA	226,632	69,800	75.9	NA	23.4	
96	6	31.3	3.0	482.4	798.2	899.0	27.2	62.7	17.9	2,321.7	2,303.8	NA	200,380	69,800	66.0	NA	23.0	
96	7	33.4	3.2	514.9	851.8	959.4	29.0	66.9	19.1	2,477.7	2,458.6	NA	218,266	69,800	70.4	NA	22.5	
96	8	32.8	3.2	504.4	834.5	939.8	28.4	65.5	18.7	2,427.2	2,408.5	NA	216,212	69,800	69.0	NA	22.3	
96	9	33.4	3.2	514.6	851.5	958.9	29.0	66.9	19.1	2,476.6	2,457.5	NA	227,622	69,800	70.4	NA	21.6	
96	10	38.1	3.7	586.3	970.1	1,092.5	33.0	76.2	21.7	2,821.6	2,799.9	NA	238,492	69,800	80.2	NA	23.5	
96	11	36.7	3.5	565.3	935.3	1,053.3	31.8	73.5	20.9	2,720.4	2,699.5	NA	231,440	69,800	77.3	NA	23.3	
96	12	33.4	3.2	514.0	850.3	957.7	28.9	66.8	19.0	2,473.3	2,454.3	NA	207,102	69,800	70.3	NA	23.7	
97	1	45.8	4.4	705.3	1,166.9	1,314.2	39.7	91.6	26.1	3,394.1	3,368.0	NA	283,304	69,800	96.5	NA	23.8	
97	2	30.4	2.9	467.6	773.7	871.3	26.3	60.8	17.3	2,250.3	2,233.0	NA	193,887	69,800	64.0	NA	23.0	
97	3	33.5	3.2	515.9	853.6	961.3	29.0	67.0	19.1	2,482.7	2,463.6	NA	213,493	69,800	70.6	NA	23.1	
97	4	34.6	3.3	533.3	882.3	993.6	30.0	69.3	19.8	2,566.2	2,546.5	NA	222,657	69,800	73.0	NA	22.9	
97	5	35.9	3.5	552.2	913.5	1,028.9	31.1	71.7	20.5	2,657.2	2,636.7	NA	226,457	69,800	75.6	NA	23.3	
97	6	34.9	3.4	536.7	888.0	1,000.1	30.2	69.7	19.9	2,582.8	2,562.9	NA	224,701	69,800	73.4	NA	22.8	
97	7	35.9	3.5	552.0	913.3	1,028.6	31.1	71.7	20.5	2,656.5	2,636.1	NA	236,111	69,800	75.5	NA	22.3	
97	8	33.0	3.2	508.4	841.1	947.3	28.6	66.1	18.8	2,446.4	2,427.6	NA	214,328	69,800	69.6	NA	22.7	
97	9	37.0	3.6	569.2	941.7	1,060.5	32.0	74.0	21.1	2,739.0	2,717.9	NA	239,178	69,800	77.9	NA	22.7	
97	10	36.9	3.5	567.3	938.5	1,057.0	31.9	73.7	21.0	2,729.9	2,708.9	NA	247,525	69,800	77.6	NA	21.9	
97	11	35.6	3.4	547.5	905.9	1,020.2	30.8	71.1	20.3	2,634.9	2,614.6	NA	223,225	69,800	74.9	NA	23.4	
97	12	42.7	4.1	657.5	1,087.9	1,225.2	37.0	85.4	24.4	3,164.3	3,140.0	NA	268,265	69,800	90.0	NA	23.4	
1997 Total:		436.1	42.0	6,712.9	11,106.3	12,508.3	378.0	872.2	248.7	32,304.4	32,055.7			1997 Avg:			76.5	23.0
1996 Total:		408.4	39.3	6,286.3	10,400.6	11,713.5	353.9	816.8	232.9	30,251.8	30,018.9			1996 Avg:			71.7	23.1
1995 Total:		415.2	40.0	6,391.7	10,574.9	11,909.9	359.9	830.5	236.8	30,759.0	30,522.1			1995 Avg:			72.9	24.2
1994 Total:		408.0	39.3	6,279.8	10,389.8	11,701.3	353.6	815.9	232.7	30,220.4	29,987.7			1994 Avg:			71.6	24.7
1993 Total:		379.6	36.6	5,843.1	9,667.2	10,887.6	329.0	759.2	216.5	28,118.7	27,902.2			1993 Avg:			66.4	23.5
1992 Total:		575.2	NA	6,595.5	9,289.1	7,915.0	182.7	917.2	498.2	25,972.9	25,474.7			1992 Avg:			60.7	23.1
1991 Total:		410.6	NA	5,961.3	11,116.4	6,540.8	157.9	1,004.0	252.5	25,443.5	25,191.0			1991 Avg:			60.0	24.1
1990 Total:		658.5	NA	4,874.2	9,687.8	9,057.2	64.1	745.4	115.8	25,203.0	25,087.2			1990 Avg:			59.9	26.6
1989 Total:		320.1	NA	5,296.5	9,118.7	7,524.8	13.3	678.0	31.0	22,982.4	22,951.4			1989 Avg:			58.9	25.8
1988 Total:		159.4	NA	3,574.5	5,186.7	5,411.5	0.0	392.2	39.4	14,763.7	14,724.3			1988 Avg:			41.2	29.2

NORTH END PERCENTAGE BREAKDOWN BY MATERIAL

YEAR	ALUM	FERROUS METAL	GLASS	MIXED PAPER	NEWS-PAPER	PLASTIC (PET/HDPE)	TIN	CONTAM-INANTS	TOTAL w/cont
1997 Avg:	1.4%	0.1%	20.8%	34.4%	38.7%	1.2%	2.7%	0.8%	100%
1996 Avg:	1.4%	0.1%	20.8%	34.4%	38.7%	1.2%	2.7%	0.8%	100%
1995 Avg:	1.4%	0.1%	20.8%	34.4%	38.7%	1.2%	2.7%	0.8%	100%
1994 Avg:	1.4%	0.1%	20.8%	34.4%	38.7%	1.2%	2.7%	0.8%	100%
1993 Avg:	1.4%	0.1%	20.8%	34.4%	38.7%	1.2%	2.7%	0.8%	100%
1992 Avg:	2.2%	NA	25.4%	35.8%	30.5%	0.7%	3.5%	1.9%	100%
1991 Avg:	1.6%	NA	23.7%	43.6%	25.4%	0.6%	4.0%	1.0%	100%
1990 Avg:	1.4%	NA	19.4%	39.0%	36.4%	0.3%	3.0%	0.5%	100%
1989 Avg:	1.4%	NA	23.0%	39.7%	32.7%	0.1%	3.0%	0.1%	100%
1988 Avg:	1.0%	NA	24.2%	35.1%	36.7%	0.0%	2.7%	0.3%	100%

CURBSIDE RECYCLING PROGRAM

SOUTH END TONNAGE DATA

Yr	Mo	ALUM	FERROUS METAL	GLASS	MIXED PAPER	NEWS-PAPER	PLASTIC (PET/HDPE)	TIN	CONTAM-INANTS	TOTAL w/cont	TOTAL w/o cont	SIGN UPS	SET OUTS	ELIGIBLE HOUSEHOLDS	POUNDS PER HOUSEHOLD	PERCENT SIGNUP	POUNDS PER SET OUT
96	1	25.2	2.8	440.0	838.1	802.7	24.5	38.0	58.9	2,230.4	2,171.4	67,881	65,502	78,500	55.3	86%	66.3
96	2	23.4	2.6	408.2	777.6	744.8	22.8	35.3	54.7	2,069.3	2,014.7	68,125	62,475	78,500	51.3	87%	64.5
96	3	22.3	2.5	389.3	741.6	710.3	21.7	33.7	52.1	1,973.6	1,921.4	68,186	62,530	78,500	49.0	87%	61.5
96	4	22.1	2.5	384.9	733.2	702.3	21.5	33.3	51.5	1,951.3	1,899.7	68,282	62,375	78,500	48.4	87%	60.9
96	5	24.6	2.7	428.4	816.2	781.7	23.9	37.0	57.4	2,172.0	2,114.6	68,395	64,287	78,500	53.9	87%	65.8
96	6	26.8	3.0	468.0	891.6	854.0	26.1	40.5	62.7	2,372.7	2,310.0	67,404	73,185	78,500	58.9	86%	63.1
96	7	22.1	2.5	385.4	734.2	703.2	21.5	33.3	51.6	1,953.7	1,902.1	67,537	61,384	78,500	48.5	86%	62.0
96	8	24.8	2.8	432.2	823.4	788.6	24.1	37.4	57.9	2,191.2	2,133.3	67,654	65,446	78,500	54.4	86%	65.2
96	9	24.2	2.7	421.6	803.1	769.2	23.5	36.4	56.5	2,137.2	2,080.7	67,753	66,588	78,500	53.0	86%	62.5
96	10	22.7	2.5	395.5	753.4	721.6	22.1	34.2	53.0	2,005.0	1,952.0	69,022	70,498	78,500	49.7	88%	55.4
96	11	25.6	2.8	445.9	849.5	813.6	24.9	38.5	59.7	2,260.6	2,200.9	69,151	66,812	78,500	56.1	88%	65.9
96	12	20.9	2.3	363.6	692.7	663.4	20.3	31.4	48.7	1,843.3	1,794.6	69,188	53,951	78,500	45.7	88%	66.5
97	1	31.6	3.5	551.0	1,049.7	1,005.3	30.7	47.6	73.8	2,793.3	2,719.5	69,203	80,150	78,500	69.3	88%	67.9
97	2	24.6	2.7	428.5	816.2	781.7	23.9	37.0	57.4	2,172.0	2,114.6	69,416	64,209	78,500	53.9	88%	65.9
97	3	21.5	2.4	374.3	713.0	682.9	20.9	32.4	50.1	1,897.4	1,847.2	69,536	58,648	78,500	47.1	89%	63.0
97	4	22.9	2.5	399.4	760.8	728.7	22.3	34.5	53.5	2,024.6	1,971.2	69,637	61,222	78,500	50.2	89%	64.4
97	5	25.2	2.8	439.3	836.9	801.6	24.5	38.0	58.8	2,227.1	2,168.3	69,763	67,655	78,500	55.2	89%	64.1
97	6	26.2	2.9	457.4	871.4	834.6	25.5	39.5	61.2	2,318.8	2,257.5	69,935	65,373	78,500	57.5	89%	69.1
97	7	23.6	2.6	411.6	784.1	750.9	23.0	35.6	55.1	2,086.5	2,031.3	70,049	62,924	78,500	51.8	89%	64.6
97	8	25.6	2.8	446.1	849.9	814.0	24.9	38.6	59.7	2,261.7	2,201.9	70,146	67,853	78,500	56.1	89%	64.9
97	9	24.3	2.7	423.3	806.5	772.4	23.6	36.6	56.7	2,146.2	2,089.5	70,262	61,210	78,500	53.2	90%	68.3
97	10	25.2	2.8	439.8	837.8	802.5	24.5	38.0	58.9	2,229.6	2,170.7	66,952	60,049	78,500	55.3	85%	72.3
97	11	28.1	3.1	489.4	932.3	892.9	27.3	42.3	65.5	2,480.9	2,415.4	70,423	65,323	78,500	61.5	90%	74.0
97	12	26.2	2.9	456.1	868.9	832.2	25.4	39.4	61.1	2,312.1	2,251.0	70,523	63,646	78,500	57.4	90%	70.7
1997 Total:		304.9	33.9	5,316.2	10,127.4	9,699.7	296.5	459.6	711.9	26,950.1	26,238.2			1997 Avg:		55.7	67.4
1996 Total:		284.7	31.6	4,963.1	9,454.8	9,055.5	276.8	429.1	664.6	25,160.2	24,495.6			1996 Avg:		52.0	63.2
1995 Total:		292.5	32.5	5,099.1	9,713.8	9,303.6	284.4	440.8	682.8	25,849.4	25,166.6			1995 Avg:		53.2	66.6
1994 Total:		288.4	32.0	5,027.6	9,577.7	9,173.3	280.4	434.6	673.2	25,487.3	24,814.1			1994 Avg:		52.7	67.5
1993 Total:		273.2	30.4	4,763.7	9,074.9	8,691.7	228.5	411.8	637.9	24,149.3	23,474.2			1993 Avg:		49.8	71.6
1992 Total:		287.6	NA	4,106.5	8,321.5	9,497.9	106.1	492.7	761.4	23,573.7	22,812.3			1992 Avg:		48.4	68.5
1991 Total:		274.0	NA	3,579.1	8,421.4	9,562.4	110.4	419.7	751.9	23,118.9	22,367.0			1991 Avg:		47.5	70.1
1990 Total:		236.6	NA	4,222.7	7,514.0	8,315.8	99.0	561.4	570.1	21,519.6	20,949.5			1990 Avg:		43.9	72.3
1989 Total:		113.1	NA	3,374.9	6,030.9	7,590.8	75.6	601.9	90.0	17,877.2	17,787.2			1989 Avg:		36.2	70.2
1988 Total:		82.9	NA	1,259.1	2,553.0	5,069.9	0.0	257.0	0.0	9,221.9	9,221.9			1988 Avg:		25.0	74.9

SOUTH END PERCENTAGE BREAKDOWN BY MATERIAL

YEAR	ALUM	FERROUS METAL	GLASS	MIXED PAPER	NEWS-PAPER	PLASTIC (PET/HDPE)	TIN	CONTAM-INANTS	TOTAL w/cont
1997 Avg:	1.1%	0.1%	19.7%	37.6%	36.0%	1.1%	1.7%	2.6%	100%
1996 Avg:	1.1%	0.1%	19.7%	37.6%	36.0%	1.1%	1.7%	2.6%	100%
1995 Avg:	1.1%	0.1%	19.7%	37.6%	36.0%	1.1%	1.7%	2.6%	100%
1994 Avg:	1.1%	0.1%	19.7%	37.6%	36.0%	1.1%	1.7%	2.6%	100%
1993 Avg:	1.2%	0.1%	19.2%	37.1%	37.1%	0.9%	1.8%	2.8%	100%
1992 Avg:	1.2%	NA	17.4%	35.3%	40.3%	0.5%	2.1%	3.2%	100%
1991 Avg:	1.2%	NA	15.5%	36.4%	41.4%	0.5%	1.8%	3.3%	100%
1990 Avg:	1.1%	NA	19.6%	34.9%	38.6%	0.5%	2.6%	2.7%	100%
1989 Avg:	0.6%	NA	18.9%	33.7%	42.5%	0.4%	3.4%	0.5%	100%
1988 Avg:	0.9%	NA	13.7%	27.7%	55.0%	0.0%	2.8%	0.0%	100%

CURBSIDE RECYCLING PROGRAM

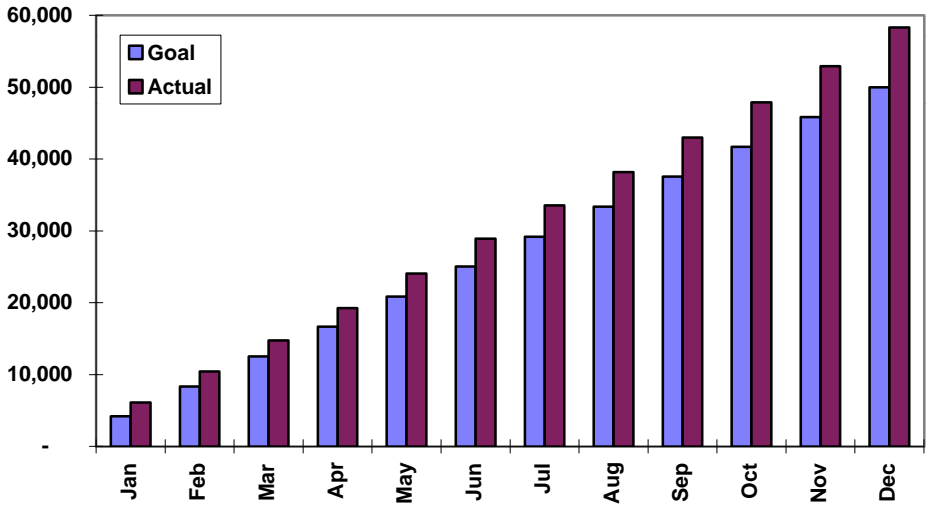
TOTAL CITY TONNAGE DATA

Yr	Mo	ALUM	FERROUS METAL	GLASS	MIXED PAPER	NEWS-PAPER	PLASTIC (PET/HDPE)	TIN	CONTAM-INANTS	TOTAL w/cont	TOTAL w/o cont	SIGN UPS	SET OUTS	ELIGIBLE HOUSEHOLDS	POUNDS PER HOUSEHOLD	PERCENT SIGNUP
96	1	56.7	5.8	924.4	1,639.6	1,705.4	51.8	101.0	76.9	4,561.6	4,484.8	NA	NA	148,300	60.5	NA
96	2	60.2	6.1	975.0	1,715.3	1,800.9	54.7	108.9	75.7	4,796.8	4,721.1	NA	NA	148,300	63.7	NA
96	3	53.4	5.5	867.9	1,533.5	1,602.2	48.7	95.8	69.9	4,276.9	4,207.0	NA	NA	148,300	56.7	NA
96	4	55.8	5.7	904.5	1,592.9	1,670.4	50.7	100.8	70.8	4,451.7	4,380.9	NA	NA	148,300	59.1	NA
96	5	60.6	6.2	983.5	1,734.4	1,815.9	55.1	109.2	77.9	4,842.9	4,764.9	NA	NA	148,300	64.3	NA
96	6	58.2	6.0	950.5	1,689.8	1,752.9	53.3	103.1	80.5	4,694.4	4,613.8	NA	NA	148,300	62.2	NA
96	7	55.6	5.7	900.3	1,586.0	1,662.5	50.5	100.2	70.7	4,431.4	4,360.7	NA	NA	148,300	58.8	NA
96	8	57.6	5.9	936.6	1,657.9	1,728.5	52.5	102.9	76.6	4,618.4	4,541.8	NA	NA	148,300	61.3	NA
96	9	57.6	5.9	936.2	1,654.6	1,728.2	52.5	103.3	75.5	4,613.8	4,538.3	NA	NA	148,300	61.2	NA
96	10	60.8	6.2	981.8	1,723.5	1,814.1	55.1	110.4	74.7	4,826.6	4,751.9	NA	NA	148,300	64.1	NA
96	11	62.3	6.4	1,011.2	1,784.8	1,867.0	56.7	112.0	80.7	4,981.0	4,900.3	NA	NA	148,300	66.1	NA
96	12	54.2	5.5	877.6	1,543.0	1,621.1	49.2	98.2	67.7	4,316.6	4,248.9	NA	NA	148,300	57.3	NA
97	1	77.4	7.9	1,256.3	2,216.6	2,319.5	70.4	139.3	99.9	6,187.4	6,087.5	NA	NA	148,300	82.1	NA
97	2	55.0	5.7	896.1	1,589.9	1,653.1	50.2	97.8	74.7	4,422.3	4,347.6	NA	NA	148,300	58.6	NA
97	3	55.0	5.6	890.2	1,566.5	1,644.2	49.9	99.4	69.2	4,380.1	4,310.8	NA	NA	148,300	58.1	NA
97	4	57.6	5.9	932.6	1,643.1	1,722.3	52.3	103.8	73.2	4,590.9	4,517.6	NA	NA	148,300	60.9	NA
97	5	61.1	6.3	991.5	1,750.5	1,830.4	55.6	109.7	79.3	4,884.3	4,805.0	NA	NA	148,300	64.8	NA
97	6	61.1	6.3	994.1	1,759.3	1,834.6	55.7	109.3	81.1	4,901.6	4,820.5	NA	NA	148,300	65.0	NA
97	7	59.5	6.1	963.6	1,697.4	1,779.5	54.0	107.3	75.6	4,743.0	4,667.4	NA	NA	148,300	62.9	NA
97	8	58.6	6.0	954.5	1,691.0	1,761.3	53.5	104.6	78.6	4,708.1	4,629.5	NA	NA	148,300	62.4	NA
97	9	61.3	6.3	992.5	1,748.1	1,833.0	55.7	110.5	77.8	4,885.1	4,807.3	NA	NA	148,300	64.8	NA
97	10	62.1	6.4	1,007.1	1,776.4	1,859.5	56.5	111.7	79.9	4,959.5	4,879.5	NA	NA	148,300	65.8	NA
97	11	63.6	6.5	1,036.9	1,838.2	1,913.2	58.1	113.5	85.8	5,115.9	5,030.0	NA	NA	148,300	67.8	NA
97	12	68.9	7.0	1,113.6	1,956.8	2,057.4	62.5	124.9	85.4	5,476.5	5,391.0	NA	NA	148,300	72.7	NA
1997 Total:		741.0	75.9	12,029.0	21,233.7	22,208.0	674.5	1,331.8	960.6	59,254.5	58,293.9			1997 Avg:		65.5
1996 Total:		693.1	71.0	11,249.4	19,855.4	20,769.0	630.8	1,245.9	897.5	55,412.0	54,514.5			1996 Avg:		61.3
1995 Total:		707.7	72.5	11,490.8	20,288.7	21,213.5	644.3	1,271.3	919.6	56,608.4	55,688.7			1995 Avg:		63.1
1994 Total:		696.3	71.3	11,307.4	19,967.5	20,874.6	634.0	1,250.6	905.9	55,707.7	54,801.8			1994 Avg:		61.6
1993 Total:		652.8	66.9	10,606.8	18,742.1	19,579.3	557.5	1,171.0	854.4	52,268.0	51,376.4			1993 Avg:		57.7
1992 Total:		862.8	NA	10,702.0	17,610.6	17,412.9	288.8	1,409.9	1,259.6	49,546.6	48,287.0			1992 Avg:		54.2
1991 Total:		684.6	NA	9,540.4	19,537.8	16,103.2	268.3	1,423.7	1,004.4	48,562.4	47,558.0			1991 Avg:		53.4
1990 Total:		895.1	NA	9,096.9	17,201.8	17,373.0	163.1	1,306.8	685.9	46,722.6	46,036.7			1990 Avg:		51.3
1989 Total:		433.2	NA	8,671.4	15,149.6	15,115.6	88.9	1,279.9	121.0	40,859.6	40,738.6			1989 Avg:		46.2
1988 Total:		242.3	NA	4,833.6	7,739.7	10,481.4	0.0	649.2	39.4	23,985.6	23,946.2			1988 Avg:		31.9

TOTAL CITY PERCENTAGE BREAKDOWN BY MATERIAL

YEAR	ALUM	FERROUS METAL	GLASS	MIXED PAPER	NEWS-PAPER	PLASTIC (PET/HDPE)	TIN	CONTAM-INANTS	TOTAL w/cont
1997 Avg:	1.3%	0.1%	20.3%	35.8%	37.5%	1.1%	2.2%	1.6%	100.0%
1996 Avg:	1.3%	0.1%	20.3%	35.8%	37.5%	1.1%	2.2%	1.6%	100.0%
1995 Avg:	1.3%	0.1%	20.3%	35.8%	37.5%	1.1%	2.2%	1.6%	100.0%
1994 Avg:	1.2%	0.1%	20.3%	35.8%	37.5%	1.1%	2.2%	1.6%	100.0%
1993 Avg:	1.2%	0.1%	20.3%	35.9%	37.5%	1.1%	2.2%	1.6%	100.0%
1992 Avg:	1.7%	NA	21.6%	35.5%	35.1%	0.6%	2.8%	2.5%	100.0%
1991 Avg:	1.4%	NA	19.6%	40.2%	33.2%	0.6%	2.9%	2.1%	100.0%
1990 Avg:	1.9%	NA	19.5%	36.8%	37.2%	0.3%	2.8%	1.5%	100.0%
1989 Avg:	1.1%	NA	21.2%	37.1%	37.0%	0.2%	3.1%	0.3%	100.0%
1988 Avg:	1.0%	NA	20.2%	32.3%	43.7%	0.0%	2.7%	0.2%	100.0%

CURBSIDE RECYCLING Cumulative Tons Collected 1997



CURBSIDE RECYCLING Monthly Tons Collected

