

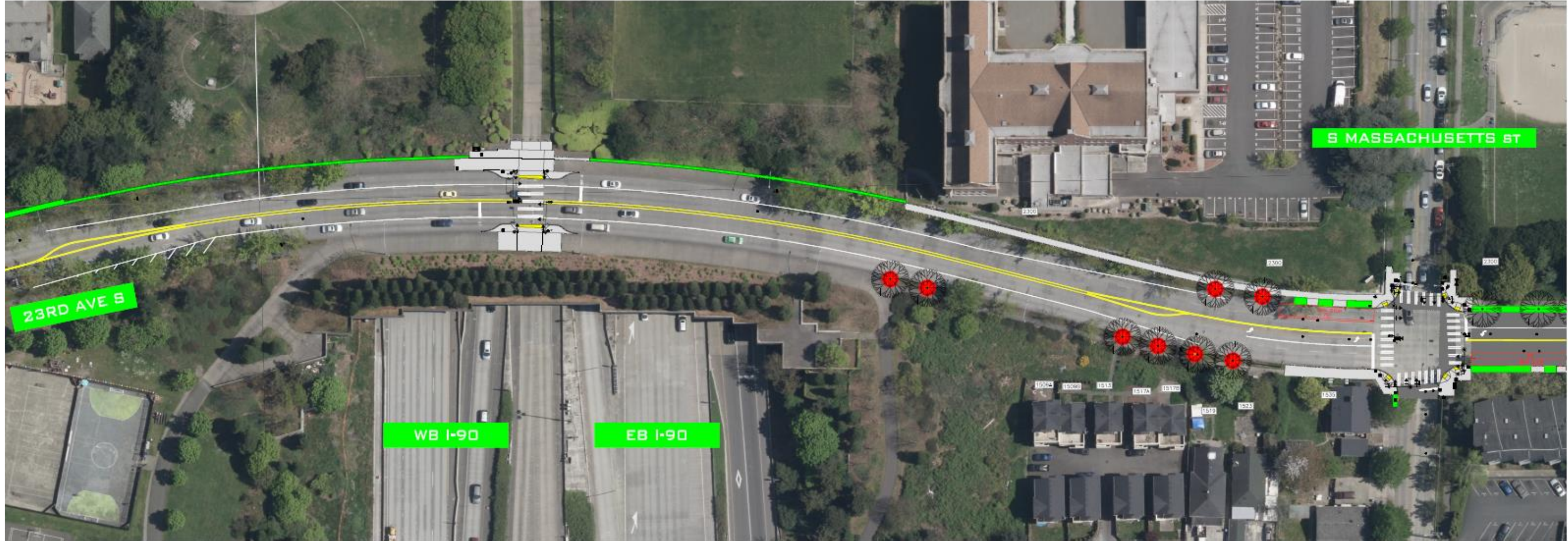


LEGEND

-  NEW SIDEWALK
-  NEW ROADWAY
-  EXISTING TREE TO BE REMOVED
-  EXISTING TREE TO REMAIN
-  NEW TREES
-  LAWN OR BARK MULCH

**23RD AVENUE CORRIDOR IMPROVEMENTS PROJECT
PHASE 2 - S JACKSON ST TO RAINIER AVE S**





LEGEND

-  NEW SIDEWALK
-  NEW ROADWAY
-  EXISTING TREE TO BE REMOVED
-  EXISTING TREE TO REMAIN
-  NEW TREES
-  LAWN OR BARK MULCH

**23RD AVENUE CORRIDOR IMPROVEMENTS PROJECT
PHASE 2 - S JACKSON ST TO RAINIER AVE S**

