

# 2017 Voter's Guide

## District 6

**YOUR VOICE,  
YOUR CHOICE!**



**PARKS  
& STREETS**

# 6A. PHINNEY RIDGE/WOODLAND PARK: Crossing Improvements on NW 50th St & Dayton Ave NW (FUNDED PROJECT, work will begin in 2018)

Add flashing beacons and curb ramps on N 50th St at Dayton Ave N to make crossing safer near schools and Woodland Park

### SDOT Proposed Solution & Comments:

- SDOT recommends Rectangular Rapid Flashing Beacon (RRFB) to be installed at this location for the east leg crossing and two new ADA compliant curb ramps on either side of the crosswalk and a concrete landing behind the ramp on the north side.

### Cost Breakdown & Partnerships:

**Your Voice, Your Choice Cost: \$75,000**

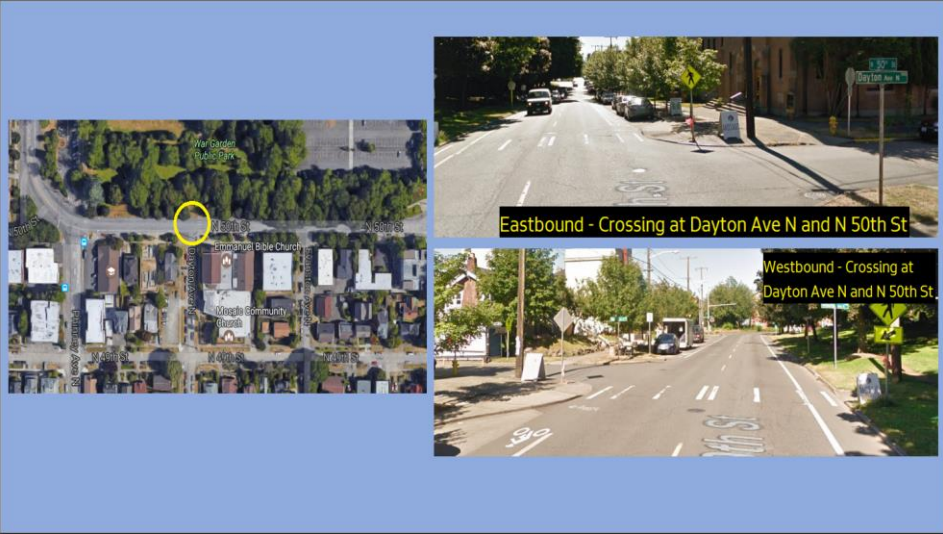
Design Costs: \$10,000

Construction Costs: \$65,000

**Partnership Opportunity:** PMP, SRTS, Traffic Calming, Traffic Operations, Street Maintenance, Urban Forestry, Roadway Structures, Signals, Transit, Vision Zero, etc.

### Current Status:

### Design Image:



# 6B. WALLINGFORD/WOODLAND PARK: Crossing Improvements on NW 50th St & Whitman Ave NW (FUNDED PROJECT, work will begin in 2018)

Add signage on N 50th St at Whitman Ave N to make crossing safer on an intersection with low visibility near Woodland Park

### SDOT Proposed Solution & Comments:

- This location is not eligible for a Rectangular Rapid Flashing Beacon (RRFB) crossing as it is stop controlled. Instead, SDOT recommends improving the crossing by updating existing signing and adding additional signs.
- The signing will be updated at this intersection, including a stop ahead sign for EB traffic, a stop here for pedestrians sign for WB traffic, and other signs to clarify the intersection.

### Cost Breakdown & Partnerships:

**Your Voice, Your Choice Cost: \$6,000**  
 Design Costs: N/A  
 Construction Costs: \$6,000  
**Partnership Opportunity:** None

### Current Status:



### Design Image:



# 6C. BALLARD: Crossing Improvements on Leary Way NW & 20th Ave NW (FUNDED PROJECT, work will begin in 2018)

Add an all-way stop on Leary Way NW at 20th Ave NW to make crossing safer near businesses

### SDOT Proposed Solution & Comments:

- Analysis of the traffic data suggests that neither a rectangular rapid flashing beacon (RRFB) or pedestrian signal would meet criteria for installation due to low traffic volumes on Leary Way NW and low traffic speeds.
- However, an all-way stop traffic control study indicates that with the existing lane configuration, the intersection can operate at satisfactory levels. The analysis indicate that the average vehicle queues would increase only slightly during the peak. An all-way stop would provide breaks in traffic for pedestrians to cross the street and increase drivers' awareness.

### Cost Breakdown & Partnerships:

**Your Voice, Your Choice Cost: \$5,000**

Design Costs: N/A

Construction Costs: \$5,000

**Partnership Opportunity:** SDOT's Pavement to Parks program has funding to implement painted curb bulbs with posts at this intersection, along with other improvements. If this project were to move forward, more permanent improvements to sidewalks and crosswalks could be made to improve pedestrian mobility.

### Current Status:



# 6D. WALLINGFORD/TANGLETOWN: Crossing Improvements on NW 55th/56th St & Keystone Ave NW

Add curb bulbs on N 55th/56th St & Keystone Ave N to make crossing safer near businesses

### SDOT Proposed Solution & Comments:

- SDOT recommends constructing a pair of curb bulbs on the western crossing at the intersection of Keystone Pl N and N 55th St.
- It is feasible to construction a pair of curb bulbs at the intersection of Keystone PL N & N 55th ST. Currently, N 55th / N 56th ST is 42' wide. The pair of curb bulbs would reduce the street opening to 30' through the intersection, and in effect, reduce the distance pedestrians would have to cross. The community can inquire and work separately with the Traffic Calming Program to address stated speeding issue along the corridor of N 55th/56th St.

### Cost Breakdown & Partnerships:

**Your Voice, Your Choice Cost: \$65,600**

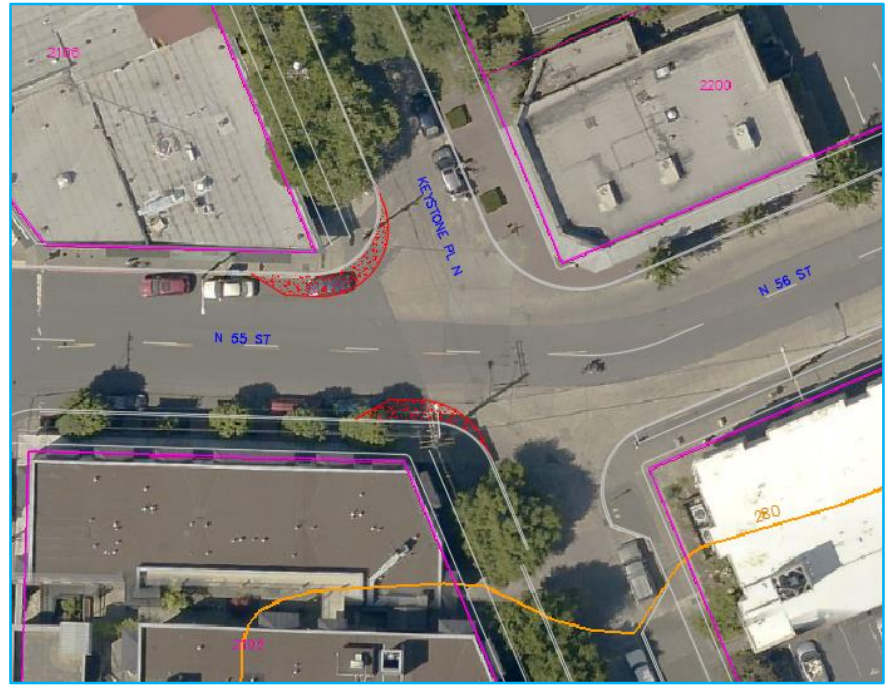
Design Costs: \$7,200

Construction Costs: \$58,400

**Partnership Opportunity:** None

### Current Status:

### Design Image:



# 6E. SUNSET HILL: Accessibility Improvements on 24th Ave NW & NW 70th St (FUNDED PROJECT, work will begin in 2018)

Add an audible crossing signal on 24th Ave NW at NW 70th St to make crossing safer for pedestrians with visual impairments

### SDOT Proposed Solution & Comments:

- SDOT can install accessible pedestrian signal (APS). Need to confirm if street message is required or just audible crossing sound.

### Cost Breakdown & Partnerships:

**Your Voice, Your Choice Cost: \$9,000**

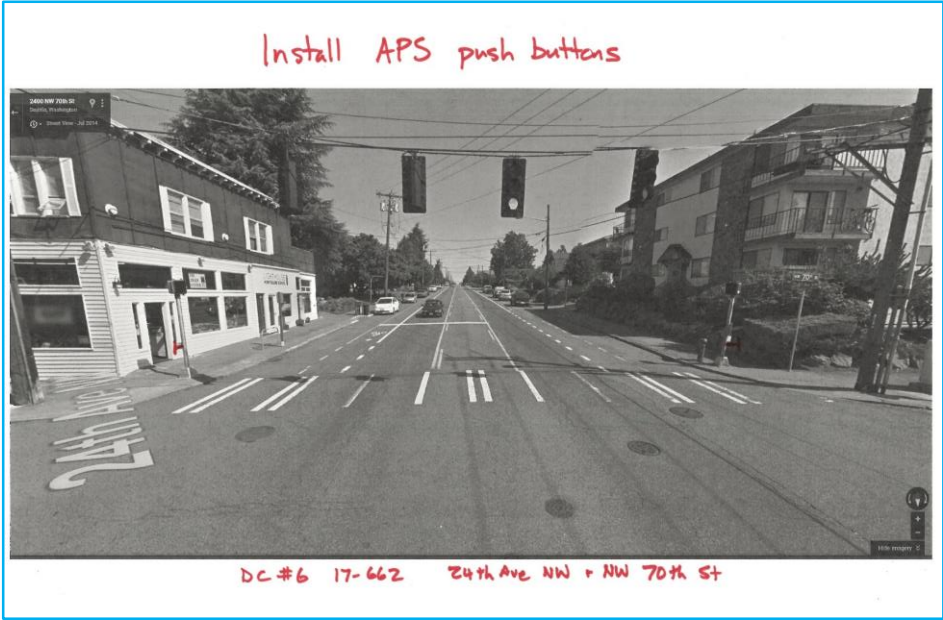
Design Costs: \$2,000

Construction Costs: \$7,000

**Partnership Opportunity: None**

### Current Status:

### Design Image:



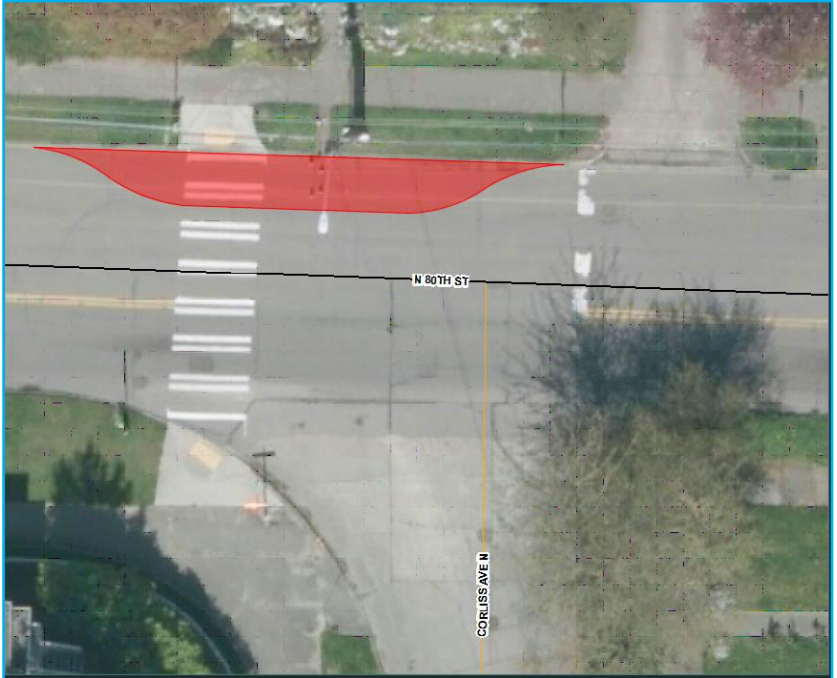
# 6F. GREEN LAKE: Crossing Improvements at NW 80th St & Corliss Ave NW (FUNDED PROJECT, work will begin in 2018)

Add a curb bulb on N 80th St at Corliss Ave N to make crossing safer near Green Lake and Bishop Blanchet High School

### SDOT Proposed Solution & Comments:

- Pedestrian volumes do not meet warrants for a rectangular rapid flashing beacon (RRFB). Instead, SDOT recommends the installation of a curb bulb to decrease the crossing distance and effectively calm traffic.
- N 80th St is a minor arterial roadway with one through lane in each direction and on-street parking on the north side. The average weekday traffic volume is 20,535 vehicles per day and the average speed is 28.9 MPH. At the peak pedestrian hour recorded, 13 pedestrians crossed N 80th St. Corliss Ave N is a non-arterial roadway with on-street parking on both sides. The intersection is stop controlled on Corliss Ave N. There is an existing marked crosswalk paired with crossing signs on the west leg of the intersection with ADA compliant ramps.
- Due to the low pedestrian crossing volume, an RRFB or raised crosswalk are not recommended at this location. To decrease the pedestrian crossing distance, improve visibility of pedestrians, and effectively calm traffic, installing a curb bulb on the north side of the intersection is recommended. When partnering with the N 80th St AAC project, it may be possible to extend the curb west to the intersection corner.

### Design Image:



### Current Status:



### Cost Breakdown & Partnerships:

**Your Voice, Your Choice Cost: \$75,430**

Design Costs: \$9,130

Construction Costs: \$75,430

**Partnership Opportunity:** N 80th St Arterial Asphalt Concrete (AAC) project may include it as part of their 2019 work if this YVYC project is prioritized.



# 6G. CROWN HILL: Traffic Calming on 14th Ave NW between Holman Rd NW & NW 95<sup>th</sup>

## (FUNDED PROJECT, work will begin in 2018)

Add low cost curbing on 14th Ave NW between Holman Road NW & NW 95th St to slow traffic near parks and schools

### SDOT Proposed Solution & Comments:

- Neighborhood Greenways will be constructing intersection improvements at 14th Ave NW and NW 92nd St. The project that would be most beneficial to traffic calming 14th Ave NW is to add wheel stops on both sides of 14th from Holman Rd to NW 92nd, and then to add wheel stops and landscaping on the east side of 14th Ave NW to NW 95th St.

### Cost Breakdown & Partnerships:

**Your Voice, Your Choice Cost: \$34,500**

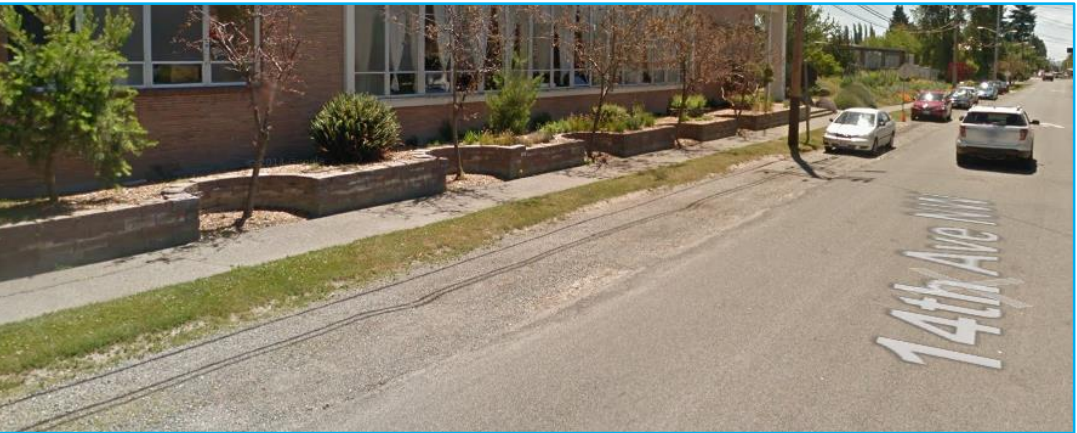
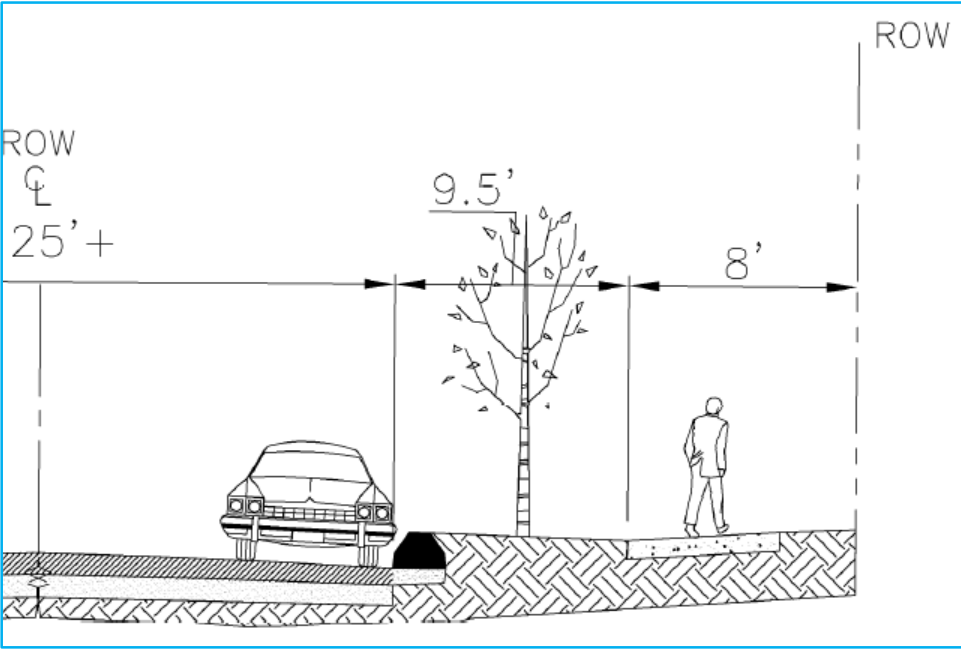
Design Costs: \$5,500

Construction Costs: \$29,000

**Partnership Opportunity:** Safe Routes to School will cover any costs over \$40,000. Estimated additional costs are \$40,000.

### Current Status:

### Design Image:





# 6H. CROWN HILL: Accessibility Improvements on 8th Ave NW

Add 4 curb ramps along the pathway on 8th Ave NW between NW 97th St & NW 100th St to improve accessibility

### SDOT Proposed Solution & Comments:

- The number of pedestrians crossing the road do not warrant adding a new crossing here. The project idea mentions wheelchairs and people with walkers limited by existing pedestrian path. Suggest improving access by upgrading existing ramps along the walking path to meet current ADA standards and provide better access between the Ballard Center and Crown Hill Business District.

### Cost Breakdown & Partnerships:

**Your Voice, Your Choice Cost: \$90,000 (\$100,000 total project cost)**

Design Costs: \$19,800

Construction Costs: \$89,200

**Partnership Opportunity:** Pedestrian Master Plan, Street Maintenance

### Current Status:



### Design Image:

