

2017 Voter's Guide

District 1

**YOUR VOICE,
YOUR CHOICE!**



**PARKS
& STREETS**

1A. ROXHILL: Improvements at Roxhill Park

Add adult fitness equipment to activate Roxhill Park

Parks Proposed Solution & Comments:

- To address safety concerns, Parks believes bringing more people to the park is the most effective solution.
- Adult fitness equipment would appeal to more generations of users.
- Three potential sites have been identified to install equipment:
 - All would require design work, grading, either adding or removing soil, in addition to purchasing the equipment.
- The project that would require at least one public meeting with the community to talk about the idea and the location. It also would give more people the chance to participate in choosing equipment and location.

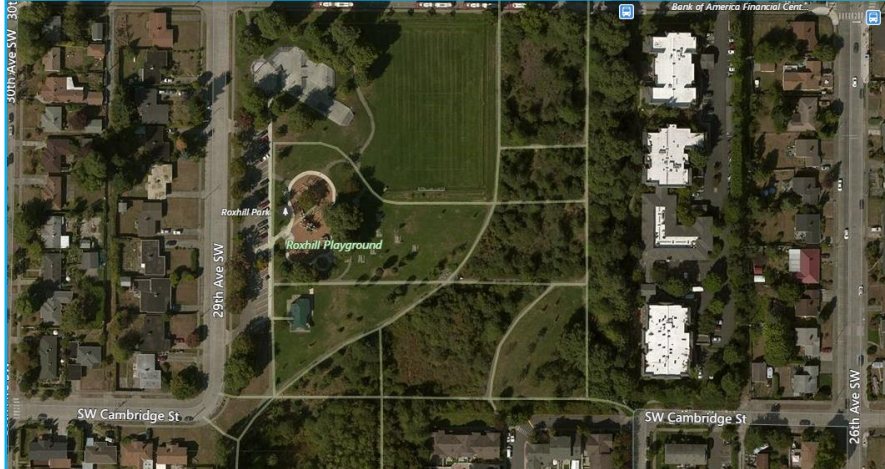
Cost Breakdown & Partnerships:

Your Voice, Your Choice Cost: \$90,000
 Design Costs: \$10,000
 Construction Costs: \$80,000

Partnership Opportunity: None

Current Status:

Design Image:



1B. SOUTH PARK: Crossing Improvements at Dallas Ave S, 12th Ave S, and S Thistle St

Add a curb bulb at the 5-way intersection of Dallas Ave S, 12th Ave S, and S Thistle St to slow traffic and make crossing safer near bus stops and businesses

SDOT Proposed Solution & Comments:

- SDOT recommends installing a painted curb bulb(s) with delineator posts to bring more definition to the intersection and shorten the pedestrian crossings.
- Site is a complex 5-legged intersection, yet there have not been any collisions in the last three years.
- Dallas Ave S. is identified as a future Neighborhood Greenway, yet it is not in the 5-year implementation plan.

Cost Breakdown & Partnerships:

Your Voice, Your Choice Cost: \$44,000
Design Costs: \$7,000
Construction Costs: \$37,000

Partnership Opportunity: None

Current Status:

Design Image:



1C. WESTWOOD/HIGHLAND PARK: Bus Stop Improvements at Delridge Way SW & SW Barton St (FUNDED PROJECT, work will begin in 2018)

Add a painted curb bulb, interim walking path & design for lighting & landscaping at "Delridge Bus Triangle" to improve safety

SDOT Proposed Solution & Comments:

- SDOT recommends the following for the "Delridge Bus Triangle":
 - Adding painted curb bulbs at east side of Delridge Way SW & SW Barton St;
 - Adding an interim walking path on the south side of SW Barton St;
 - Design for potential additional lighting;
 - Enhancing and maintaining the existing landscape.
- The primary existing assets associated with this site are the very mature street trees and the diversity of unique understory plant species. SDOT would like to consider uplighting the large trees to increase visibility and safety in a manner that "celebrates the trees". Additionally, salvaged logs from SDOT Urban Forestry removal of several very large Black Locust trees on the Delridge Corridor may provide inspiration for an arts and culture element that is aligned with a tree-centric concept for the grant funded improvements.

Design Image:



Current Status:



Cost Breakdown & Partnerships:

Your Voice, Your Choice Cost: \$90,000
 Design Costs: \$12,000
 Construction Costs: \$78,000
Partnership Opportunity: Metro RapidRide H Line



1D. HIGHLAND PARK: Crossing Improvements at SW Henderson St & 11th Ave SW

Add curb bulbs and flashing beacons to the crosswalk across SW Henderson St at 11th Ave SW to make crossing safer near Highland Park Elementary School

SDOT Proposed Solution & Comments:

- SDOT recommends additional improvements at 11th Ave SW, an existing Safe Routes To School marked crosswalk.
- Existing curb ramps at this location will allow more access to improved crossing.
- Add floating curb bulbs and Rectangular Rapid Flashing Beacons (RRFB's) to existing marked crosswalk on east leg of intersection.

Cost Breakdown & Partnerships:

Your Voice, Your Choice Cost: \$59,235

Design Costs: \$9,900

Construction Costs: \$49,335

Partnership Opportunity: None

Current Status:



Design Image:



1E. SOUTH PARK: Crossing Improvements on S Cloverdale St (FUNDED PROJECT, work will begin in 2018)

Add a crosswalk across S Cloverdale St at 12th Ave S & improve signals at the intersection on 8th Ave S to make crossing safer near bus stops, South Park Library, River City Skatepark & Concord Elementary

SDOT Proposed Solution & Comments:

- SDOT recommends a new marked crosswalk at S Cloverdale St and 12th Ave S.
 - Total Cost of marked crosswalk only: \$16,200
 - 12th Ave S meets warrants for marked crosswalk of S Cloverdale St.
- SDOT recommends signal upgrades at S Cloverdale St and 8th Ave S.
 - Total Cost of signal upgrades only: \$76,000
 - 12" signal heads to improve visibility and stop compliance
 - Upgraded APS pushbuttons for ADA improvements
 - Add mainline loop detection, which allows for fully actuated signal, significantly increasing signal responsiveness to pedestrian actuation
 - Upgrade communications equipment to fiber optics - needed for new detection and APS
 - New cabinet foundation - needed for new communications equipment

Design Image:



Current Status:



Cost Breakdown & Partnerships:

Your Voice, Your Choice Cost: \$85,700

Design Costs: \$7,700

Construction Costs: \$78,000

Partnership Opportunity: None



Seattle
Neighborhoods

1F. FAIRMOUNT PARK: Traffic Calming near 35th Ave SW & SW Dawson St

Add 4 speed humps near the intersection of 35th Ave SW & SW Dawson St to slow traffic near bus stops and Camp Long

SDOT Proposed Solution & Comments:

- SDOT would partner with Your Voice, Your Choice to enhance the approaches to the intersection of 35th Avenue SW and SW Dawson Street. This project would install up to four speed humps to reduce vehicle speeds and enhance the pedestrian and bicycling environment. Speed hump locations would be identified through engineering design and public outreach process.
- The Vision Zero 35th Ave SW Safety Corridor Project intends to install a new crossing at the intersection of 35th Ave SW and SW Dawson St. The Vision Zero project will construct new curb ramps at the intersection as well as a new crossing signal to facilitate the movement of pedestrians and bicyclists to and from Camp Long.
- Design costs including survey and labor would be mostly absorbed by the 35th Ave SW Safety Corridor Project.

Cost Breakdown & Partnerships:

Your Voice, Your Choice Cost: \$61,900

Design Costs: \$5,500

Construction Costs: \$56,400

Partnership Opportunity: Vision Zero/Safety Corridor Program

Current Status:



Design Image:



1G. HIGH POINT: Walkway Improvements on SW Orchard St between Delridge Way SW & Sylvan Way SW (FUNDED PROJECT, work will begin in 2018)

Build a low-cost sidewalk on the north side of SW Orchard St, near bus stops, businesses and the Vietnamese Cultural Center

SDOT Proposed Solution & Comments:

- The community has indicated that the greatest need for sidewalks is on the north side of SW Orchard St between Delridge Way SW and the existing sidewalk to the west. This will connect the bus stop on Delridge Way SW to the sidewalks that continue north and west on SW Sylvan Way. While a traditional concrete sidewalk is outside the scope and budget of a YVYC project, a low-cost painted walkway with asphalt infill can be installed under the budget of the YVYC program, and a partnership with the Sidewalk Development Program and SPU may be established if the street segment prioritizes in the PMP Implementation Plan.

Cost Breakdown & Partnerships:

Your Voice, Your Choice Cost: \$80,081

Design Costs: \$9,918

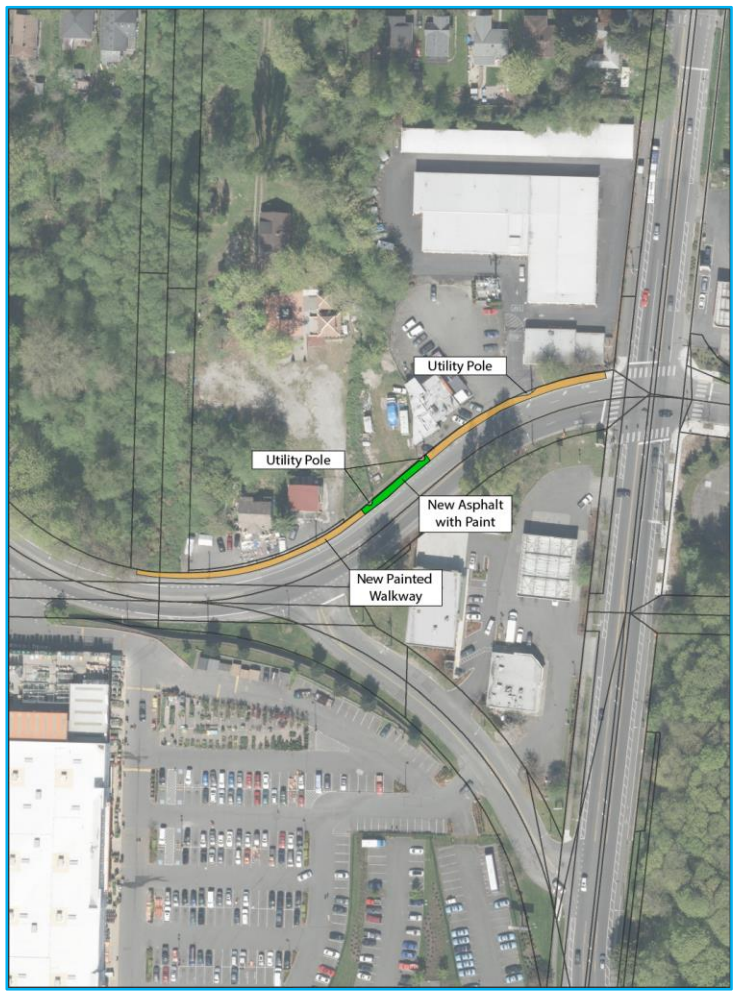
Construction Costs: \$70,163

Partnership Opportunity: The Sidewalk Development Program (PMP funding) will build a future traditional sidewalk in this location pending the prioritization of the street segment in the PMP Implementation Plan. There is also opportunity to partner with SPU on natural drainage systems in the future sidewalk design.

Current Status:



Design Image:



1H. DELRIDGE: Crossing Improvements at Delridge Way SW & SW Oregon St (FUNDED PROJECT, work will begin in 2018)

Build a crosswalk with signals and curb ramps on the south crossing of Delridge Way SW & SW Oregon St to make crossing safer near Youngstown Cultural Arts Center and Delridge Playfield

SDOT Proposed Solution & Comments:

- SDOT proposes to remove the crosswalk restriction on the south crossing and marking a crosswalk at this location. Other changes associated with this change include:
 - Install new/modify existing pedestrian curb ramps;
 - Install pedestrian signal heads;
 - Modifying existing channelization and signs
 - Moving some existing infrastructure.

Cost Breakdown & Partnerships:

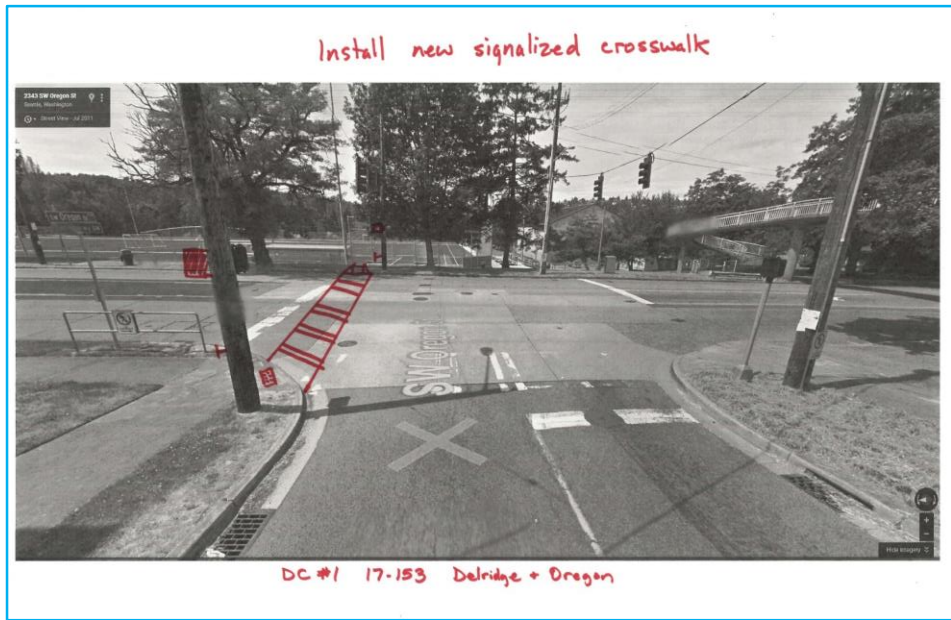
Your Voice, Your Choice Cost: \$90,000

Design Costs: \$15,000

Construction Costs: \$75,000

Partnership Opportunity: The Delridge Bus Rapid Transit (BRT) project will be evaluating potential needs along the Delridge corridor, which includes this intersection. However, their timeline may not overlap with the YVYC timeline. If this project is selected, YVYC will coordinate with this project such that the proposed improvements are compatible with any potential changes with Delridge BRT plans.

Design Image:



Current Status:



11. NORTH ADMIRAL: Crossing Improvements on California Ave SW & SW College S

Add a curb bulb, curb ramps & lighting at California Ave SW & SW College St to provide safer access to library, bus stops & businesses

SDOT Proposed Solution & Comments:

- SDOT recommends installing a new curb bulb on the southeast corner with new curb ramps, a new curb ramp on the southwest corner and adding a new streetlight on the southeast corner.
- Analysis of pedestrian and traffic data does not meet criteria for installing signal treatments at this time.

Cost Breakdown & Partnerships:

Your Voice, Your Choice Cost: \$90,000

Design Costs: \$15,000

Construction Costs: \$75,000

Partnership Opportunity: None

Current Status:



Design Image:

